

**Manhattanville in West Harlem Implementation Plan Report  
October 14, 2022 Submission**

**Declaration Reference and Key Data**

Obligation Section Number: **5.07(c)(xxv)(F)**

Obligation Title: **Community Alert System**

Obligation Page Number: **59**

Obligation Trigger: **Acquisition by ESD or CU of all Initial Stage 1 Condemnation Parcel(s)**

Obligation Start Date: **March 12, 2012**

Obligation End Date: **March 12, 2037 (25 Years from Commencement of the Center's Full Operation)**

Obligation Status: **In Compliance**

**Obligation: Innovation/Changed Conditions**

In accordance with the Declaration of Covenant and Restrictions Section 5.08, Obligation 5.07 (c) (xxv)(F) is modified to clarify the obligation. In general, the scope of services to be provided has not been changed. Empire State Development and Columbia University agreed to this modification on November 28, 2018.

**Modified Language:**

*Community Alert System.* Columbia shall provide a community alert system to notify subscribers about construction issues and a 24-hour hotline to provide callers with timely and regularly updated information about construction activity and employment opportunities related to the Project, and include the GPP Monitor on any related e-mail list serve. The annual report will identify the department within Columbia that administers the alert system.

**Evidence of Compliance**

1. Link to subscribe to notifications about construction issues and copies of construction schedules, safety and mitigation notices
2. Construction hotline phone number (212-854-2222)
3. Annual report

Columbia University's Implementation Plan and all supporting documentation are made available on the Columbia Neighbors Webpage at <https://neighbors.columbia.edu/content/community-commitments>.

# Manhattanville in West Harlem Implementation Plan Report

## October 14, 2022 Submission

### **EOC Checklist for Obligation 5.07(c)(xxv)(F):**

Please check to verify EOC items submitted for review.

- ☐ 1. Link to subscribe to notifications about construction issues and copies of construction scheduled, safety and mitigation notices
- ☐ 2. Construction hotline telephone number (212-854-2222)
- ☐ 3. Annual report

**Monitor's Notes / Comments:**

[illegible]

**Status:**

Please check to indicate the status of Obligation 5.07(c)(xxv)(F):

- ☐ In Compliance
- ☐ In Progress
- ☐ Not In Compliance
- ☐ Not Triggered

## Community Alert System

**Link to subscribe to notifications about construction issues and copies of construction schedules, safety and mitigation notices:**

<https://neighbors.columbia.edu/content/construction-updates-and-opportunities>

COLUMBIA UNIVERSITY IN THE CITY OF NEW YORK



COLUMBIA UNIVERSITY

Subscribe to Neighbors E-News



Programs & Resources ▾ Local Events News Manhattanville ▾

Home > Manhattanville > Construction Updates and Opportunities



### RETAIL SPACE AVAILABILITY

To learn about current retail leasing opportunities available on the Manhattanville Campus, visit: <https://neighbors.columbia.edu/content/manhattanville-retail-availability>

### CONSTRUCTION OPPORTUNITIES

We expect design and construction work in Manhattanville to create



Deidre Chong, 5 years at Columbia Facilities

**CALL  
4-2222**

## Now There Is One Number for All of Your Facilities Needs

**CALL  
4-2222**

Call the new Facilities Services Center at x4-2222, the new phone number for facilities services and information, campus-wide.

Call 4-2222 to:

- Report maintenance and housekeeping problems
- Request special Facilities services
- Follow up on the status or billing of an existing request
- Ask about Facilities programs, and how to obtain planning, design, engineering, or construction services



Mark Cabaroy, 18 years at Columbia Facilities

**CALL  
4-2222**

## Construction Questions?



Call the Columbia University Facilities  
Services Center at 212-854-2222  
24 hours a day, 7 days a week



E-mail [projx@columbia.edu](mailto:projx@columbia.edu)

[www.neighbors.columbia.edu](http://www.neighbors.columbia.edu)

## Construction Job Referrals

As a service to those interested in employment with construction firms currently working at Columbia, the University has developed a referral process to provide its construction partners with information on potential employees.



Complete the referral application online  
at <http://facil.columbia.edu/cref>



Visit the Columbia University Employment  
Center at 3180 Broadway (just south of  
West 125th Street)

## Construction Contracting Opportunities

For more information on construction contracting opportunities, contact Columbia University Facilities at:



[projx@columbia.edu](mailto:projx@columbia.edu)



<http://facilities.columbia.edu>

## **Annual Report: Community Alert System**

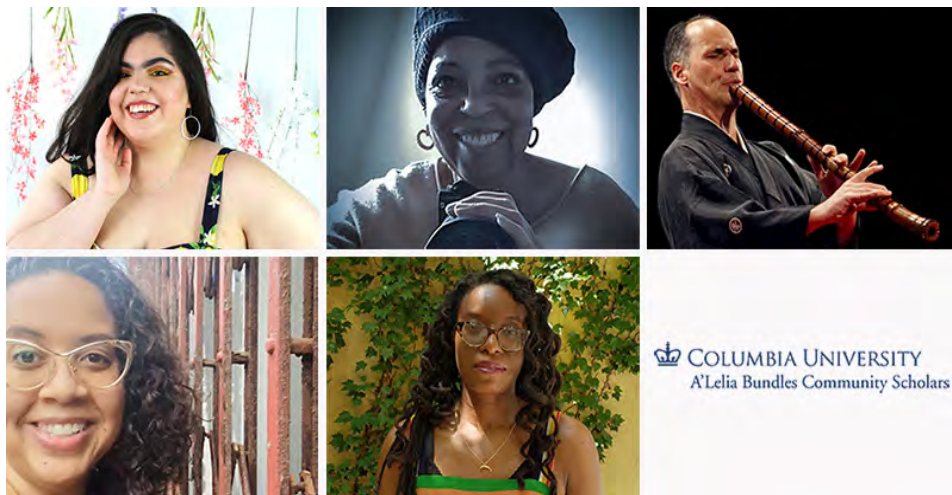
The Strategic Communications department of Columbia University Facilities and Operations issues weekly construction updates via e-mail to anyone who has subscribed to receive them. The Office of Government and Community Affairs, in collaboration with the Office of Public Affairs and Facilities and Operations, issues a monthly Neighbors Bulletin with information, news, and events of interest for our neighbors in Northern Manhattan.

<https://neighbors.columbia.edu/news>

### **Additional Supporting Documentation**

- Copies of monthly Neighbors Bulletins covering period October 2021 - September 2022
- Copies of weekly Construction Updates covering period October 4, 2021 - October 3, 2022
- Distribution lists for monthly Neighbors Bulletins and Weekly Construction Updates

# Neighbors Bulletin



The new Bundles Scholars, clockwise from top left: Moet Fontanez, Celeste Lacy Davis, Marco Lienhard, Marie Winfield, Janessa Waiters.

## Community Updates

### MEET THE 9TH COHORT OF BUNDLES SCHOLARS

Congratulations to the 9th cohort of A'Leia Bundles Community Scholars! The new scholars will work on independent projects with access to the libraries, course auditing, and more.

**Moet Fontanez**, a Puerto Rican artist with autism, will use narrative media to bring awareness to mental health issues and the late diagnosis of autism in women.

**Celeste Lacy Davis**, a graduate of the CUNY School of Law who spent her career working with marginalized populations, is developing a photography exhibition about aging populations in the U.S.

Musician **Marco Lienhard** performs internationally on a variety of Japanese instruments. He will continue his research on how Japanese music is performed worldwide and write a book on his findings and experiences.

A former nanny, **Janessa Waiters** is developing an organization to provide support and healing to domestic care workers in Harlem. She currently trains queer- and women-identified students in identity-driven research.

An attorney, consultant on land use and community planning, and advocate for East Harlem, **Marie Winfield** will document the history and activism around two public sites in Harlem, and investigate solutions for their future use.

Learn more about the Bundles Scholars at [gca.columbia.edu/scholars](https://gca.columbia.edu/scholars).

### REGISTER NOW TO VOTE ON NOVEMBER 2



New Yorkers have the opportunity to vote on a number of citywide and district offices in the general election on November 2, 2021, including mayor, comptroller, and city council. There will also be several ballot referendums, addressing issues such as no excuse absentee voting, voter registration, and redistricting.

To register to vote, mail a completed voter registration form by October 8. That's also the deadline to update your address if you've moved since you last voted. The deadline to request an absentee ballot by mail or online is October 18. All New Yorkers are eligible to vote by mail due to the COVID-19 pandemic.

Learn more about getting ready to vote at [vote.columbia.edu](https://vote.columbia.edu).

## Community Events

Check with event organizers for the latest updates, find more events at [neighbors.columbia.edu/events](https://neighbors.columbia.edu/events)



### Reflections on "Becoming Othello: A Black Girl's Journey"

Oct 7, 6PM

Bundles Scholar Debra Ann Byrd will reflect on

the years-long experience and process of creating and starring in her living memoir solo show.

[neighbors.columbia.edu/othello](https://neighbors.columbia.edu/othello)



### Live from Columbia: Simone Dinnerstein, Piano

Oct 12, 7PM

Dinnerstein performs a work composed

specifically for her by Richard Danielpour, in honor of the many people affected by this dark period.

[neighbors.columbia.edu/dinnerstein](https://neighbors.columbia.edu/dinnerstein)



### Lamont Open House at Home

Oct 13 & 14, 10AM

Log on for earth science talks for all ages, hands-on earth science activities, and hearing from researchers about their discoveries.

[neighbors.columbia.edu/lamonthome](https://neighbors.columbia.edu/lamonthome)



### Race + Data Science Lecture: Deborah Raji

Oct 13, 2PM

Mozilla fellow Deborah Raji's lecture is part of a series advancing

research on race and data, engineering, and computational science.

[neighbors.columbia.edu/raceanddata](https://neighbors.columbia.edu/raceanddata)



### Morningside Lights PLAY ON! Video Celebration

Oct 26, 7PM

The 10th annual celebration will be a digitally linked collection of lanterns, connecting works of Shakespeare to our present-day experience.

[neighbors.columbia.edu/lights2021](https://neighbors.columbia.edu/lights2021)



### 2021 General Election Nov 2

The polls will be open to vote for mayor, comptroller, city council, and more.

There are also several referendums on the ballot.

[neighbors.columbia.edu/vote](https://neighbors.columbia.edu/vote)

# Neighbors Bulletin



CCS Grantee: Broadway Community

## Community Updates

### DONATE YOUR TIME THIS FALL

This winter you can donate your time to help a wide variety of organizations in Upper Manhattan and around New York City. There's always a particular need for help at food pantries distributing meals around this time of year. Many Columbia Community Service grantees are seeking volunteers for these and other roles.

**Broadway Community** needs volunteers to help prepare to-go soup kitchen meals on Mondays, Tuesdays, Wednesdays, Fridays, and Sundays.

**WANA Community Center** needs volunteers to help staff their Monday food pantry and soup kitchens on Fridays, Saturdays, and Sundays.

**NY Common Pantry** is seeking volunteers who can help package and distribute nutritious meals for their Harlem Hot Meals program. They also need people who can assemble packages of groceries for Harlem Choice Pantries.

There are plenty of other ways to give back in the community before the end of the year. Head to [neighbors.columbia.edu/giveback](https://neighbors.columbia.edu/giveback) to find virtual and in-person opportunities, including tutoring, career development support, visiting and assisting senior citizens, and more.

## COLUMBIA COMMUNITY SERVICE, 75 YEARS OF GIVING



Columbia Community Service (CCS) directs contributions from Columbia, Barnard, and Teachers College faculty, staff, and retirees to nonprofits that serve Harlem and Morningside Heights. Founded in 1946, CCS began when a small group of faculty and civic-minded women sent a letter to all Columbia faculty and staff asking for contributions to charities that were helping families and communities navigate the challenges of the post-World War II period.

This year, CCS plans to increase its fundraising efforts in order to support organizations that fight hunger, provide social services, and promote literacy in Harlem and Morningside Heights.

Learn more about CCS at [communityservice.columbia.edu](https://communityservice.columbia.edu).

## Community Events

Check with event organizers for the latest updates, find more events at [neighbors.columbia.edu/events](https://neighbors.columbia.edu/events)



### Harlem Arts Stroll

Nov 6, 1PM

Join the Harlem Arts stroll, an innovative collaboration of galleries, art spaces and businesses from 110th to 155th streets.

[neighbors.columbia.edu/ArtsStroll](https://neighbors.columbia.edu/ArtsStroll)

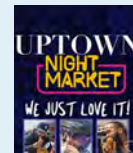


### Music on Wednesdays at Interfaith Church

Nov 10, 12PM

See a free performance by solo pianist Itay Goren playing Beethoven's Appassionata Sonata.

[neighbors.columbia.edu/beethoven](https://neighbors.columbia.edu/beethoven)

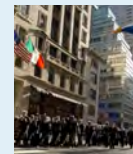


### Uptown Night Market

Nov 11, 4PM

Check out the year's final Uptown Night Market, celebrating the culture, cuisine, and community of Harlem with this market near the Riverside Drive underpass.

[neighbors.columbia.edu/nightmarket](https://neighbors.columbia.edu/nightmarket)



### NYC Veterans Day Parade

Nov 11, 8AM

Keep your eyes peeled for the Columbia delegation at this

parade, which starts at Fifth Avenue and 25th Street and heads north to 40th Street.

[neighbors.columbia.edu/raceanddata](https://neighbors.columbia.edu/raceanddata)



### Race + Data Science: Ali Alkhatib, University of San Francisco

Nov 17, 1PM

The DSI Race + Data Science Lecture Series,

chaired by Desmond Upton Patton, features speakers who are advancing research on race and data.

[neighbors.columbia.edu/racedata](https://neighbors.columbia.edu/racedata)



### Fort Washington Greenmarket

Tuesdays, Until Nov 23

Get local produce, honey, and bread, check out cooking demonstrations, and more at this market. SNAP/EBT, WIC, and Senior FMNP accepted.

[neighbors.columbia.edu/ftwashmkt](https://neighbors.columbia.edu/ftwashmkt)

# Neighbors Bulletin



## Community Updates

### SHOP LOCAL THIS HOLIDAY SEASON

Skip the crowds at the chain stores and help support your community by shopping at locally owned stores in Upper Manhattan. Small businesses and artisans uptown are selling everything from striking and fashionable clothes to handcrafted candles with scents based around Harlem's history to wellness and spa packages. Here are just a few of the many, many merchants who can help you check people off your shopping list this December:

The online shop **Serengeti Tea** offers a rich selection of teas with different aromas and flavors. Order one of their sample gift sets for the tea connoisseur in your life.

**Sisters Uptown Bookstore** is a community resource and bookseller. Use their in-store shopping hours to explore a diverse collection of African diasporic literature.

**UpLift Spa** brings East Harlem charm to the boutique spa experience, including services such as laser treatments and facials.

**Zenobia's Sweet Tooth** offers a variety of delicious cookies straight from the kitchen of "Cookie Lady" Zenobia, including classics like chocolate chip and daring options like pineapple upside-down cookies.

See a much more comprehensive list at [neighbors.columbia.edu/shops-small](https://neighbors.columbia.edu/shops-small).

### ENJOY THE HOLIDAY LIGHTS THIS DECEMBER



As it gets dark earlier, it's the perfect time to start enjoying holiday lights in the evenings. The lights are already up on 125th Street and Columbia's Manhattanville campus, but there are plenty more coming this month.

Head to West Harlem Piers Park at 4:30 or Morningside Park at 5:00 for their tree lighting parties on December 4. There'll be live music and sweet treats at both. Columbia's main campus holiday lights will be turned on on December 2. New York City's iconic Christmas tree at Rockefeller Center is being lit on December 1.

Learn more at [neighbors.columbia.edu/holidaylights](https://neighbors.columbia.edu/holidaylights). Know of lights or a lighting even we didn't include? Shoot us an email at [neighbors@columbia.edu](mailto:neighbors@columbia.edu).

## Community Events

Check with event organizers for the latest updates, find more events at [neighbors.columbia.edu/events](https://neighbors.columbia.edu/events)



### HIV & COVID-19: When Pandemics Collide

Dec 2, 12PM

Commemorate World AIDS Day with a discussion of how the HIV response can inform the COVID response and how COVID has impacted HIV programs.

[neighbors.columbia.edu/hiv-covid](https://neighbors.columbia.edu/hiv-covid)



### The Zip Code Memory Project Community Gathering for COVID

Dec 5, 4PM

Gather at the Cathedral of St. John the Divine to mourn and pay tribute to the losses of COVID-19 with candles, music, and photos.

[neighbors.columbia.edu/zipcode](https://neighbors.columbia.edu/zipcode)



### Music on Wednesdays at the Interchurch Center

Dec 8, 12PM

The weekly Noonday Concert will feature the Interchurch Center Chorus performing Benjamin Britten's "Ceremony of Carols."

[neighbors.columbia.edu/nooncarols](https://neighbors.columbia.edu/nooncarols)



### The Gershwins' Porgy and Bess at the Metropolitan Opera

Thru Dec 12

Use the exclusive promo code COLUMBIANEIGHBORS to buy \$50 orchestra seats to this American classic.

[neighbors.columbia.edu/porgybess](https://neighbors.columbia.edu/porgybess)

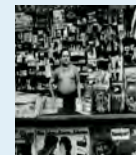


### Learn the Lindy Hop!

Dec 7, 14, & 21, 7PM

Learn to swing with The Harlem Swing Dance Society on Tuesday nights in December. \$10 per person (free under 17) and no partner required.

[neighbors.columbia.edu/lindyhop](https://neighbors.columbia.edu/lindyhop)



### En Foco: The New York Puerto Rican Experience, 1973-74

Thru Feb 27

El Museo del Barrio presents an exhibition of a portfolio of photos documenting the lives of Puerto Rican New Yorkers in the 1970s.

[neighbors.columbia.edu/enfoco](https://neighbors.columbia.edu/enfoco)

# Neighbors Bulletin



## Community Updates

### A NEW HOME FOR COLUMBIA BUSINESS SCHOOL

In January, two new Columbia Business School (CBS) buildings will be joining the Jerome L. Greene Science Center, The Forum, and the Lenfest Center for the Arts as the open buildings on the new Manhattanville campus. Henry R. Kravis Hall and David Geffen Hall will create multifunctional spaces that foster a sense of community where students, faculty, alumni, neighbors and practitioners can gather to exchange ideas. They will also house many of the entrepreneurial and locally-minded programs at CBS, like the Columbia-Harlem Small Business Development Center, which has supported hundreds of small businesses in New York City before and during the pandemic.

In addition to the buildings, which hold publicly-accessible spaces like the Wallach Art Gallery and Dear Mama Coffee, the Manhattanville campus includes outdoor open spaces. The Plaza, located in front of the Lenfest Center for the Arts and The Square, between the CBS buildings, are open to the public and have free WiFi.

Learn more about the new Business School buildings and explore the rest of the Manhattanville campus at [neighbors.columbia.edu/manhattanville](https://neighbors.columbia.edu/manhattanville).

### SHARING MEALS WITH OUR NEIGHBORS



Columbia President Lee C. Bollinger's annual breakfast has been a cherished holiday tradition for many years. This year, instead of hosting an event in person, we partnered with local restaurants to provide 750 meals to our neighbors. With the assistance of Chocolat Restaurant & Bar, Ricardo Steakhouse, Greedy Pot, Melba's Restaurant, Ponty Bistro, Dinosaur Bar-B-Que, and BLVD Bistro, we were able to support small businesses in our community and help our neighbors during these challenging times.

"My wife Jean and I offer our thanks to everyone who made this important community partnership possible," Bollinger said. "We wish you a happy, healthy holiday season and all the very best for the new year."

Read more at [neighbors.columbia.edu/sharingmeals](https://neighbors.columbia.edu/sharingmeals)

## Community Events

Check with event organizers for the latest updates, find more events at [neighbors.columbia.edu/events](https://neighbors.columbia.edu/events)



### Schomburg Center's 10th Annual Black Comic Book Festival Jan 13-15

Bringing together creators and fans to virtually celebrate Black comic books, the festival will include panels, workshops, cosplay, and more.

[neighbors.columbia.edu/blkcomicfest](https://neighbors.columbia.edu/blkcomicfest)



### What We (Don't) Know: Thoughts on Biography & Portrait Photography Jan 13, 6:30PM

This discussion of the role of identity in portrait photography will use images from the Wallach Gallery exhibition Time and Face.

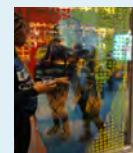
[neighbors.columbia.edu/photography](https://neighbors.columbia.edu/photography)



### Abolish Legal Slavery in NY: #FixThe13thNY Campaign Launch Jan 17, 12PM

Join Next100 and the #FixThe13thNY on a campaign to abolish forced labor and improve wages and working conditions in New York State prisons.

[neighbors.columbia.edu/FixThe13th](https://neighbors.columbia.edu/FixThe13th)



### Call to Artists: Art in the Education Lab Commission Due Jan 17

NYC artists can submit a proposal for a commissioned piece that will encourage people to explore science through art.

[neighbors.columbia.edu/EdLabArt](https://neighbors.columbia.edu/EdLabArt)



### New Exhibitions at the Wallach Art Gallery Jan 19 – Mar 12

Object Relations:

Indigenous

Belongings, Time and

Face: Daguerreotypes to Digital Prints, and What is the Use of Buddhist Art? are open this spring.

[wallach.columbia.edu](https://wallach.columbia.edu)



### Turn On the TAP Advocacy Day Jan 25

Join this call to restore financial assistance for higher education in prisons, with a focus on the exclusion of Black Americans from education.

[neighbors.columbia.edu/tapadvocacy](https://neighbors.columbia.edu/tapadvocacy)

# Neighbors Bulletin



The view of Harlem from the Carl Shurz Memorial overlook. Photo by Kevin C. Matthews.

## Community Updates

### EXPLORE HARLEM WITH KEVIN MATTHEWS

Harlem resident Kevin C. Matthews, chief of staff at the Schomburg Center for Research in Black Culture, got to know the neighborhood as a Columbia student in the 1970s. He recently wrote about his favorite areas to walk in Harlem for Columbia Neighbors. Check out some of the highlights:

**Carl Shurz Memorial Outlook:** Watch dawn break over the rooftops of Harlem from the western edge of Morningside Park.

**Morningside Drive to Frederick Douglass Memorial:** Walking Morningside Drive to 110th Street and then over to Central Park takes you to the Frederick Douglass Memorial located there and facing north.

**Harlem Meer & Central Park:** Head across the northern edge of Central Park to explore the Harlem Meer, full of waterfowl, and a secluded, manicured garden off 5th Avenue.

**Harriet Tubman Memorial:** Heading uptown on 8th Avenue instead of east takes you to the statue of Harriet Tubman at 122nd Street, facing south towards the statue of Frederick Douglass.

**Spirit of Harlem:** Just a few blocks north, at 125th Street and Frederick Douglass, is a mosaic by artist Louis Delsarte.

Check out the full list and take a self-guided walking tour at

[neighbors.columbia.edu/walkharlem](https://neighbors.columbia.edu/walkharlem)

### BUSINESS SCHOOL SCHOLARSHIPS FOR HBCU GRADS



Students applying to Columbia Business School will soon have access to a new scholarship fund, thanks to a \$10 million gift from Robert F. Smith '94 (pictured left), founder, chairman, and CEO of Vista Equity Partners. The Robert F. Smith '94 Scholarship Fund will be awarded to students who graduated from HBCUs, overcame systemic hardships in their academic pursuits, or demonstrated a commitment to diversity.

"Robert Smith's gift provides us with significant support in our effort to bring in a diverse student body to our School and to help create a more inclusive, equitable and innovative society," said Costis Maglaras, dean and David and Lyn Silfen Professor of Business.

Read more at [neighbors.columbia.edu/HBCUgrads](https://neighbors.columbia.edu/HBCUgrads).

## Community Events

Check with event organizers for the latest updates, find more events at [neighbors.columbia.edu/events](https://neighbors.columbia.edu/events)



### The Art of Listening: Under Water

Feb 3-13

Visitors to Jana Winderen's installation experience a

composition of underwater recordings from all over the world, including New York City.

[neighbors.columbia.edu/underwater](https://neighbors.columbia.edu/underwater)



### Starting Your Lean Business

Feb 5, 11AM

The SBDC provides a free introduction to business principles to

help local entrepreneurs in starting, scaling, and growing their endeavors.

[neighbors.columbia.edu/leanbusiness](https://neighbors.columbia.edu/leanbusiness)



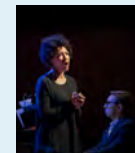
### Blood Drive at Interchurch Center

Feb 7, 9AM

Help your neighbors and community by giving blood this

winter. Appointments are recommended but walk-ins will be accepted if space permits.

[neighbors.columbia.edu/blooddrive](https://neighbors.columbia.edu/blooddrive)



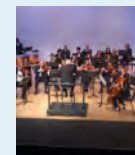
### A Dream Deferred: Langston Hughes in Song

Feb 22, 7PM

Powerful and incisive poems by Langston

Hughes are set to music in a recital curated by soprano Julia Bullock in this MetLiveArts digital premiere.

[neighbors.columbia.edu/dreamdefer](https://neighbors.columbia.edu/dreamdefer)



### 14th Annual Black History Month Celebration

Feb 23, 6PM

Enjoy the music of Black composers like

William Grant and Nkeiru Okoye at this Harlem Chamber Players concert.

[neighbors.columbia.edu/chamberbhm](https://neighbors.columbia.edu/chamberbhm)



### The Harlem Maker Fair

Feb 26, 1PM

This annual exhibition of creative coding projects includes robotics, game design,

audio engineering, the visual arts, and more.

[neighbors.columbia.edu/makerfair](https://neighbors.columbia.edu/makerfair)

# Neighbors Bulletin



Duke Ellington. Photo from Herman Leonard Photography LLC.

## Community Updates

### EXPLORE DUKE ELLINGTON'S 'SUCH SWEET THUNDER'

Throughout the 2021-2022 academic year, Columbia University presents a festival inspired by the "tone parallel" between Shakespeare and Such Sweet Thunder, the Duke Ellington Orchestra's 1957 Shakespearean suite.

A collaboration between departments around the university, Such Sweet Thunder's programming includes performances by renowned Shakespearean actors, lectures, a discussion of Toni Morrison's *Desdemona*, an art exhibition, a performance of Such Sweet Thunder, and more. The project extends to undergraduate students, who will now study *Othello* and Such Sweet Thunder in humanities classes.

"Conceived by our accomplished faculty across multiple academic disciplines, rooted in the works of two geniuses of different centuries who are taught in our undergraduate Core Curriculum, and engaging both celebrated artists and our Harlem neighbors, Such Sweet Thunder so aptly reflects my own core belief in the essential role of the arts and humanities in fulfilling Columbia's unique identity both in and of the City of New York," says University President Lee C. Bollinger.

Explore Such Sweet Thunder at [suchsweetthunder.columbia.edu](https://suchsweetthunder.columbia.edu).

### JOIN THE 10TH COHORT OF BUNDLES SCHOLARS



 COLUMBIA UNIVERSITY  
A'Leia Bundles Community Scholars



Columbia University invites members of the Upper Manhattan community to become A'Leia Bundles Community Scholars. During the three-year program, Bundles scholars work on a project or goal. For example, past scholars have developed nonprofits, written books, and produced podcasts. Ideas with a community connection are strongly encouraged.

Chosen in a competitive application process, Bundles Scholars are given access to academic resources, including libraries, course auditing, and campus events. They also receive a Columbia email address, an ID card, and opportunities to share their work and build relationships.

Apply by April 29. Learn more at [gca.columbia.edu/scholars](https://gca.columbia.edu/scholars).

## Community Events

Check with event organizers for the latest updates, find more events at [neighbors.columbia.edu/events](https://neighbors.columbia.edu/events)



### Women's Jazz Festival: Curators Salon

March 8, 7PM

Hear from founder Melba Joyce and others about 30 years

of curating the Women's Jazz Festival. After, enjoy a performance by Jazzmobile.

[neighbors.columbia.edu/jazzsalon](https://neighbors.columbia.edu/jazzsalon)



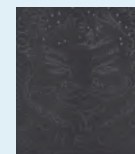
### A'Leia Bundles Community Scholars Information Session

March 9, 6PM

Learn about the resources and benefits

available to Bundles Scholars as well as the application process, and ask questions of program staff.

[neighbors.columbia.edu/scholarsinfo](https://neighbors.columbia.edu/scholarsinfo)



### Chris Ofili: The Othello Prints

Thru March 12

Chris Ofili's etchings challenge viewers to see in *Othello: The*

*Moor of Venice* aspects of the tragedies that plague the world today.

[neighbors.columbia.edu/othelloprints](https://neighbors.columbia.edu/othelloprints)



### Freedom & Citizenship Application

Due March 15

NYC rising seniors can participate in this free summer program at

Columbia where they learn about civic engagement and political philosophy.

[neighbors.columbia.edu/fsapplication](https://neighbors.columbia.edu/fsapplication)



### Engineering the Next Generation Summer Program

Due March 21

This 6-week summer research program at

Columbia Engineering for NYC rising seniors includes research mentorship, college prep, and more.

[neighbors.columbia.edu/eng2022](https://neighbors.columbia.edu/eng2022)



### Quickbooks 101 For Entrepreneurs

March 26, 1PM

This is the first of four sessions introducing small business owners

to the bookkeeping platform and help organize financial transactions.

[neighbors.columbia.edu/quickbooks](https://neighbors.columbia.edu/quickbooks)

# Neighbors Bulletin



NYCP Pantry Packers at work.

## Community Updates

### SPEND NATIONAL VOLUNTEER MONTH WITH CCS GRANTEES

April is National Volunteer Month! If you're looking for something to do with your time, here's a list of Columbia Community Service (CCS) grantee organizations working to combat hunger, support youth development, and provide social services that need help with everything from meal preparation at soup kitchens, to administrative work in offices, to event setup and breakdown.

Just a few of the opportunities available:

- America SCORES New York needs volunteers to help run their Game Days on Wednesdays and Fridays, including set up, break down, refereeing, serving snacks, and more.
- New York Common Pantry needs volunteers to help organize, pack, and distribute food on Tuesdays, Wednesdays, and Thursdays.
- Riverside Language Program is seeking volunteers to have 90-minute conversations with English Language Learners to help them improve fluency.
- Wendy Hilliard Gymnastics Foundation needs volunteers to help with office work, such as scanning and archiving photos on weekday mornings or afternoons.

Find more volunteer opportunities at [neighbors.columbia.edu/volunteermonth](https://neighbors.columbia.edu/volunteermonth).

### GET FREE HELP FILING YOUR TAXES THIS APRIL



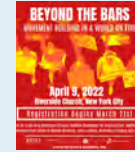
With Free File programs from the IRS and New York State, and free assistance from local organizations, tax season is no reason to break a sweat. Before Tax Day on Monday, April 18, check your eligibility for the federal and state Free File programs through the IRS and New York State Department of Taxation and Finance websites.

If you want help filing your taxes, there are resources available for free in NYC for some ages groups and income levels. The New York Public Library works with several organizations to provide free in-person and virtual tax assistance for seniors and people who made less than \$60,000 in 2021.

Get more details at [neighbors.columbia.edu/freefile](https://neighbors.columbia.edu/freefile).

## Community Events

Check with event organizers for the latest updates, find more events at [neighbors.columbia.edu/events](https://neighbors.columbia.edu/events)



### Beyond the Bars: Movement Building in a World on Fire

April 9, 10:00 AM

The conference brings together movements for decarceration, abolition, and climate justice to share strategies and build solidarity and power.

[neighbors.columbia.edu/btb2022](https://neighbors.columbia.edu/btb2022)



### Toni Morrison Reads 'Othello'

April 12, 6:00 PM

Shakespearean scholars Jean Howard and Kim F. Hall discuss

Morrison's re-imagining of the tragedy, which centers Desdemona.

[neighbors.columbia.edu/othello](https://neighbors.columbia.edu/othello)



### Congressman Adriano Espaillat's Annual Virtual Career Fair

April 20 & 21, 10:00 AM

With employers in healthcare, education, retail, government, and more, this career fair has everything that both applicants and companies need.

[neighbors.columbia.edu/careerfair](https://neighbors.columbia.edu/careerfair)



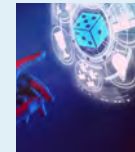
### Such Sweet Thunder: A Concert Dance

April 21, 7:00 PM

Celebrate Such Sweet Thunder with this campus-community

performance at The Forum, featuring world-renowned dancer LaTasha Barnes.

[neighbors.columbia.edu/SSTdance](https://neighbors.columbia.edu/SSTdance)



### Bridging the Digital Divide Through Play

April 28, 4:00 PM

Dennis Morgan, creator of Harlem CoLab, argues that

play is key for learners as they master technological tools and vital skills in this economy.

[neighbors.columbia.edu/allgames](https://neighbors.columbia.edu/allgames)



### A'Lelia Bundles Community Scholars Application Deadline

April 29

Bundles scholars receive three years of access to Columbia resources, such as course auditing and library collections to work on a specific project or goal.

[neighbors.columbia.edu/scholarsapp](https://neighbors.columbia.edu/scholarsapp)

# Neighbors Bulletin



Darielle Fernandez, Paul Kehinde Ajayi, and Haley Lucas.

## Community Updates

### CONGRATULATIONS TO OUR LOCALLY-INVOLVED GRADUATES!

Commencement season at Columbia has arrived, and Columbia Neighbors is honored to share the stories of three graduates doing great work in the community around our campuses.

Paul Kehinde Ajayi will receive a Masters of Public Health in Epidemiology from Columbia's Mailman School of Public Health. He currently lives in Morningside Heights and works with BioBus on the Manhattanville campus.

Darielle Fernandez, from Washington Heights, will complete her undergraduate degree at Columbia College with a focus in African American Studies and Education. She brings awareness to the Black and Brown Trans-Womxn communities as an educator and healer, including Upper Manhattan.

Haley Lucas, graduating from Columbia College, is an African American and African Diaspora Studies major with a special concentration in Educational Studies. She tutors elementary school students in Harlem, and was recently awarded the 2021 Zachary Cornell Husser Prize for Community Engagement and Empowerment.

Get to know these fantastic grads at [neighbors.columbia.edu/localgrads22](https://neighbors.columbia.edu/localgrads22).

### GET EXCITED FOR MANHATTANVILLE COMMUNITY DAY



Join us for the return of Manhattanville Community Day on Saturday, May 21! Activities will start at 12PM, and continue through the afternoon and evening.

Attend live performances, enjoy free food samples, shop local goods from clients of the Columbia-Harlem Small Business Development Center, sketch the streets of Harlem with the Wallach Art Gallery, and learn about the future of the mind at Saturday Science. There will also be opportunities to learn about health with the Community Wellness Center, information about Columbia and neighborhood programs, and free swag.

Every event is free and open to the public. Sign up at [neighbors.columbia.com/CommunityDay](https://neighbors.columbia.com/CommunityDay) to stay in the loop.

## Community Events

Check with event organizers for the latest updates, find more events at [neighbors.columbia.edu/events](https://neighbors.columbia.edu/events)

### Poets, Preachers, and the Politics of Black Faith

A Performance and Public Conversation With  
JOSHUA BENNETT  
... SAUL WILLIAMS

**Say It Loud: Poets, Preachers, and the Politics of Black Faith**  
May 6, 5:30 PM

Examine the connections between black poetics and preaching, religion and the literary arts, and performance as a practice of freedom.

[neighbors.columbia.edu/sayitloud](https://neighbors.columbia.edu/sayitloud)



**Columbia Greenhouse Nursery School Spring Fair 2022**

May 7, 11:00 AM

Enjoy a day of family fun with games, rides, food, magic, musical performances, and the popular community-wide rummage sale!

[neighbors.columbia.edu/springfair22](https://neighbors.columbia.edu/springfair22)



**Uptown Night Market**  
May 12, 4:00 PM

Fill up on food from local restaurants and vendors, enjoy live performances, and take in the atmosphere on the second Thursday of every month.

[neighbors.columbia.edu/nightmarket](https://neighbors.columbia.edu/nightmarket)



**The Riverside Church Career Day for High School Students**

May 14, 10:00 AM

Students have the opportunity to connect their academic pursuits and personal passions to future careers at this annual event.

[neighbors.columbia.edu/careerday](https://neighbors.columbia.edu/careerday)



**Harlem Bazaar**

May 20, 2:00 PM

MASC Hospitality Group brings together artists, merchants, creators, inventors, designers, and visionaries on the 3rd Friday of every month.

[neighbors.columbia.edu/harlembazaar](https://neighbors.columbia.edu/harlembazaar)



**Lunch & Learn: Understanding Financial Statements**  
May 21, 11:00 AM

Learn about profit and loss statements, balance sheets, income statements, and more in this recorded webinar from the Columbia-Harlem SBDC.

[neighbors.columbia.edu/statements](https://neighbors.columbia.edu/statements)

# Neighbors Bulletin



Photo courtesy of the Upper Manhattan Asian Alliance.

## Community Updates

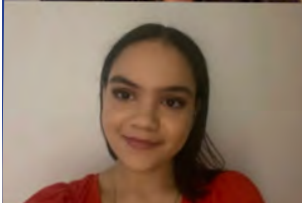
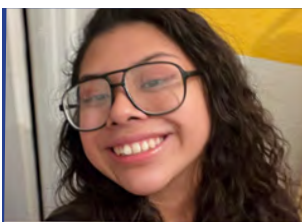
### SUPPORTING OUR AAPI NEIGHBORS IN UPPER MANHATTAN

Started in the summer of 2021, the Upper Manhattan Asian Alliance (UMAA) is taking action to make sure the members of Upper Manhattan's Asian communities—7% of the area's population—are seen and represented. With an uptick in hate crimes against the Asian community in New York, the newly formed organization saw an opportunity for education and change.

The organization was founded in response to the assault on Yao Pan Ma, a 61-year-old Chinese immigrant who was attacked in East Harlem and later died of his injuries. In the fall of 2021, they started distributing meals to Asian seniors living in East Harlem with the help of the organization Heart of Dinner. Since then, they've added a variety of events, including a Moon Festival celebration, and hosting monthly gatherings bringing together organizations serving the local Asian. A key component of their work is language assistance for residents, and helping residents as they engage with the city and other service providers.

Columbia Neighbors recently spoke with the founders of the alliance, Eva Chan and Lilian Chow, to learn more about the group and how people can get involved. Read the Q&A with UMAA at [neighbors.columbia.edu/umaa](https://neighbors.columbia.edu/umaa).

### MEET THIS YEAR'S FREEDOM AND CITIZENSHIP GRADS



Since its start in 2009, Columbia's Freedom and Citizenship academic enrichment program has graduated nearly 400 students. Freedom and Citizenship provides high school students from New York City who are from low-income families or who would be the first in their family to attend college with an introduction to college-level work in the humanities and prepares them for lives as informed, responsible citizens.

This year's class of graduates includes students from around the city, including several who will be coming to Columbia next year! Meet Joanna Cuatlayo, Alejandro Alvarez Luna, Geraldine Cabrera, and Melanie Ortiz at [neighbors.columbia.edu/f&cgrads](https://neighbors.columbia.edu/f&cgrads).

## Community Events

Check with event organizers for the latest updates, find more events at [neighbors.columbia.edu/events](https://neighbors.columbia.edu/events)



### Hike the Heights

June 4, 10:00 AM

The annual hike is held on the Giraffe Path, a 6 mile trail that connects the Cloisters to Central

Park through Upper Manhattan's cliffside parks.

[neighbors.columbia.edu/hikeheights](https://neighbors.columbia.edu/hikeheights)



### Family Gardening @ The Greenhouse Education Center

June 4, 11, 18, and 25, 11:30 AM

Children of all ages

can enjoy outdoor gardening activities and plant exploration, including exploring the pollinator garden.

[neighbors.columbia.edu/gardening](https://neighbors.columbia.edu/gardening)



### Uptown Night Market

June 12, 4:00 PM

Fill up on food from local restaurants and vendors, enjoy live performances, and

take in the atmosphere on the second Thursday of every month.

[neighbors.columbia.edu/nightmarket](https://neighbors.columbia.edu/nightmarket)



### #TrustWorkers

#### PhotoVoice Exhibit

Opens June 14

#TrustWorkers: (Re) Building Relationships Between New Yorkers

and the Medical System will feature photographs of and by community health workers.

[neighbors.columbia.edu/trustworkers](https://neighbors.columbia.edu/trustworkers)



### Little Lions Summer Camp Scholarship Lottery 2022

Deadline June 14

The WHDC's lottery is open for the Columbia

University scholarships for a free 2-week session of Little Lions Summer Camp.

[neighbors.columbia.edu/littlelions22](https://neighbors.columbia.edu/littlelions22)



### Schomburg Center Literary Festival

June 18, 10:30 AM

Author readings, panel discussions, and workshops will cover prose, poetry, comic books, young adult novels, fiction, and nonfiction.

[neighbors.columbia.edu/schomburglit](https://neighbors.columbia.edu/schomburglit)

# Neighbors Bulletin



The members of the Community Advisory Council.

## Community Updates

### MEET THE NEW COMMUNITY ADVISORY COUNCIL

This spring, Columbia University President Lee C. Bollinger announced the creation of the Community Advisory Council, a new effort to support and expand partnerships and programs with community leaders and organizations in Harlem and Upper Manhattan. The council is chaired by Dr. Melissa Begg, Dean of the Columbia School of Social Work; Dr. Wafaa El-Sadr, Columbia University Professor, Director of ICAP at Columbia University, and of Columbia World Projects; Dr. Rafael A. Lantigua, Director of the Office of Community Service Programs, Associate Dean for Community Service, and Professor of Medicine at Columbia University Irving Medical Center; and Dr. Olajide A. Williams, Professor and Chief of Staff of the Department of Neurology at CUIMC, and Co-Director of the Columbia Wellness Center.

The Community Advisory Council met for the first time in May, and at that meeting the other 20 members of the council were announced. Those members include experts in the criminal justice system, African American studies, epidemiology, urban planning, constitutional law, and many other fields.

Meet the rest of the Advisory Council at [neighbors.columbia.edu/advisory](https://neighbors.columbia.edu/advisory).

### LEARN TO CODE AT COLUMBIA FOR FREE



Justice Through Code (JTC) works to solve the crisis of mass incarceration by addressing two of the most significant contributors to recidivism: a lack of job training and the subsequently high rates of unemployment for the formerly incarcerated. The program, which is a semester-long coding intensive for formerly incarcerated and justice-involved individuals, also provides interpersonal skills training and networking opportunities. The goal is for JTC students to emerge as competitive applicants for jobs and internships.

Applications are open until July 31 for the fall 2022 session. The program will run through March of 2023. Learn more at [neighbors.columbia.edu/jtc2022](https://neighbors.columbia.edu/jtc2022).

## Community Events

Check with event organizers for the latest updates, find more events at [neighbors.columbia.edu/events](https://neighbors.columbia.edu/events)

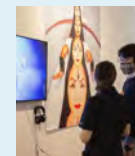


### The Classical Theater of Harlem Presents 'Twelfth Night'

July 5-29, 8:30 PM

This Afrofuturistic take on the Shakespearean classic comedy of star-crossed lovers features Tony nominee Kara Young as Viola.

[neighbors.columbia.edu/12thnight](https://neighbors.columbia.edu/12thnight)



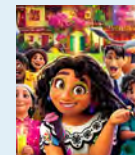
### Harlem Arts Stroll

July 9, 1:00 pm

Starting at Calabar Gallery, the stroll showcases galleries, art spaces, and

businesses in Harlem from 110th to 155th streets.

[neighbors.columbia.edu/artsstroll](https://neighbors.columbia.edu/artsstroll)



### Film Works Alfresco 'Encanto' Screening

July 11, 8:30 PM

Enjoy river views, live music, and Disney's Encanto at this

installment of NYC's only free English and Spanish language outdoor-cinema series.

[neighbors.columbia.edu/encanto](https://neighbors.columbia.edu/encanto)



### Uptown Night Market

July 14, 4:00 PM

Enjoy the atmosphere under the 12th Avenue arches with this monthly street festival

that includes live performances, local food, and more.

[neighbors.columbia.edu/nightmarket](https://neighbors.columbia.edu/nightmarket)



### CLOTH's 70th Year Anniversary Jazz Event

July 21, 5:00 PM

Enjoy an evening of jazz at the Morris-Jumel Mansion to

celebrate the impact of CLOTH over the last 70 years. Bring a blanket for lawn seating!

[neighbors.columbia.edu/70thjazz](https://neighbors.columbia.edu/70thjazz)



### Everybody Tango!

July 28, 6:30 PM

Enjoy introductory Argentine Tango lessons, music, and dancing at West

Harlem Piers with Strictly Tango NYC. Lessons are held at 6:45 and 7:45.

[neighbors.columbia.edu/tango](https://neighbors.columbia.edu/tango)

# Neighbors Bulletin



Susannah Koteen (Lido Harlem), Beejhy Barhany and Padmore John (Tsion Cafe), and Laura Hart (RoboFun).

## Community Updates

### WITH HELP, LOCAL BUSINESSES BOUNCE BACK

The COVID-19 pandemic forced many local business owners to dig deep and get creative to keep their doors open. They sought out loans and grants, found opportunities to connect in the community, and expanded their business models. With help from a Columbia loan fund, government programs, and their own tenacity, they were able to make it through.

Neighbors spoke to the owners of three local establishments about how they managed it. At Lido Harlem, owner Susannah Koteen closed twice, but was able to reopen due the financial support they received and an understanding landlord. Now she and chef Serena Bass have opened two new restaurants and are looking forward to Frederick Douglass Boulevard's Open Street. Laura Hart, the owner of RoboFun, and her staff moved all their educational programming online in March of 2020, but are now holding in-person summer camps and classes. In Sugar Hill, the owners of Tsion Cafe partnered with local groups to feed essential workers and expanded their retail sales. They're now back with live music, art from local artists on the walls, and a wide array of Ethiopian Jewish dishes on the menu.

Read the full interviews at [neighbors.columbia.edu/smallbizrecovery](https://neighbors.columbia.edu/smallbizrecovery).

### GET READY FOR NEW YORK'S SECOND PRIMARY



On August 23, New Yorkers will head to the polls for this year's second primary election. This election is for United States House of Representatives and New York State Senate. It's being held now, instead of in June, because of delays finalizing the districts after the 2020 Census.

Here are the key dates you need to know for the second primary:

- If you need an absentee ballot, request it online or by mail by August 8 or in person by August 22
- Early voting is available from August 13 to August 21
- The polls are open on Election Day (August 23) from 6:00 am to 9:00 pm
- If you're voting absentee, mail your ballot by August 23

Check out [neighbors.columbia.edu/2ndprimary](https://neighbors.columbia.edu/2ndprimary) for any more information you need.

## Community Events

Check with event organizers for the latest updates, find more events at [neighbors.columbia.edu/events](https://neighbors.columbia.edu/events)



### Faces of Harlem 2022

Aug 6 – Nov 30

10 photographers share images that show life, creativity, relationships, and love

in Harlem in this Morningside Park exhibition.

[neighbors.columbia.edu/harlemfaces](https://neighbors.columbia.edu/harlemfaces)



### Uptown Night Market

August 11, 4:00 pm

Enjoy the atmosphere under the 12th Avenue arches with this monthly street festival that includes live performances, local food, and more.

[neighbors.columbia.edu/nightmarket](https://neighbors.columbia.edu/nightmarket)



### The Harlem Maker Fair

August 12, 10:00 am

The Harlem Maker Fair is back in person at the Pelham Fritz recreation center! Learn about robotics, art, and coding in Marcus Garvey Park.

[neighbors.columbia.edu/makerfair](https://neighbors.columbia.edu/makerfair)



### Uptown Stories: The 10-Minute Play

Aug 15 – Aug 19, 10 am

Take on the fundamentals of playwriting in this

character- and dialogue-focused workshop for ages 12-16. \$25 for the full week.

[neighbors.columbia.edu/uptownstory](https://neighbors.columbia.edu/uptownstory)



### Harlem Meer Performance Festival: Despers USA Steel Orchestra

August 21, 2:00 pm

Close out this

summer's festival with Despers USA Steel Orchestra, founded in 1976, which has performed around the world.

[neighbors.columbia.edu/despersusa](https://neighbors.columbia.edu/despersusa)



### Billion Oyster Project Presentation

August 27, 12:00 pm

Come learn about the Billion Oyster Project, a major effort to restore

New York's harbor, on the Baylander's Jungle Deck at West Harlem Piers.

[neighbors.columbia.edu/billionoyster](https://neighbors.columbia.edu/billionoyster)

# Neighbors Bulletin



The High Bridge connecting Washington Heights with the Bronx.

## Community Updates

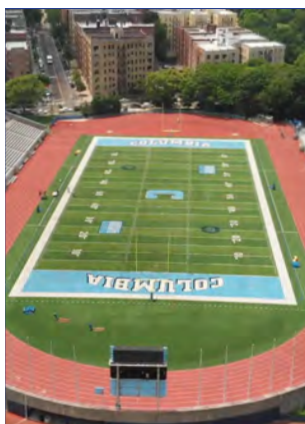
### EXPLORE HISTORY IN UPPER MANHATTAN

Spend the fall getting to know Upper Manhattan! Whether you're a long-time resident or a new arrival, Harlem and Washington Heights are packed full of so much history that there's always something to discover. Here are a few highlights:

- The Morris-Jumel Mansion, the oldest surviving residence in Manhattan, was a headquarters for both sides during the American Revolution (not at the same time!) and then a tavern. Take a tour for \$10, or head to one of the many arts and cultural celebrations on the grounds.
- Harlem's Sugar Hill Historic District is full of striking row houses and mansions in a variety of early 20th century styles. Many of them were occupied by notable Harlemites like W.E.B. DuBois and Thurgood Marshall, so keep your eyes peeled for their addresses while you admire the buildings.
- A popular promenade in the 19th century, the High Bridge once carried water to New York City from Westchester. Enjoy beautiful views of the Harlem River while stepping directly into New York's past in Highbridge Park.

Get more details on these sites and other historic treasures uptown at [neighbors.columbia.edu/uptownhistory](https://neighbors.columbia.edu/uptownhistory).

### MAKE THE MOST OF BAKER ATHLETIC COMPLEX



Since 1921, Columbia has been a proud part of the Inwood community and we provide community members access to the Baker Athletics Complex and Muscota Marsh in a variety of ways. Here are a few of them:

The Wien Stadium Track is open for use at predetermined times. The hours are updated weekly on the Columbia Athletics website ([gocolumbialions.com](https://gocolumbialions.com)) under "Track Access."

Northern Manhattan Neighbors Appreciation Day, hosted by Columbia Football, will be on October 8, 2022. Tickets are free to the community.

The repair and expansion of the Muscota Marsh dock was completed earlier this year, allowing small boats access to the Harlem River.

Learn more at [neighbors.columbia.edu/accessuptown](https://neighbors.columbia.edu/accessuptown).

## Community Events

Check with event organizers for the latest updates, find more events at [neighbors.columbia.edu/events](https://neighbors.columbia.edu/events)



**Uptown Night Market**  
September 8, 4:00 pm  
Celebrate cuisine, culture, and community at September's Uptown Night Market under the arches on 12th Avenue.  
[neighbors.columbia.edu/nightmarket](https://neighbors.columbia.edu/nightmarket)



**The Wellness Circle**  
September 13, 12:00 pm  
The Forum and the Harlem Wellness Center will hold free weekly chair stretches and meditation sessions in the West Atrium.  
[neighbors.columbia.edu/wellnesscircle](https://neighbors.columbia.edu/wellnesscircle)



**2022-2023 State Pre-College Enrichment Program**  
Due September 15  
7th to 12th graders interested in medicine and STEM careers can apply to participate in this free college prep program that will run on Saturdays from October to May.  
[neighbors.columbia.edu/sprep2022](https://neighbors.columbia.edu/sprep2022)



**InTOuCH Community Health Program Fall Training Application**  
Due September 15  
Get involved with health and healthcare in your community by becoming a certified community health worker through this free training program.  
[neighbors.columbia.edu/chwtraining](https://neighbors.columbia.edu/chwtraining)



**Citizenship Day**  
September 17, 10:00 am  
Join Dominicans USA for a free citizenship application event at St. Francis Cabrini Shrine, including fee waiver assistance and legal help.  
[neighbors.columbia.edu/citizenship](https://neighbors.columbia.edu/citizenship)



**11th Annual Morningside Lights Procession: The Reimagined Monument**  
September 24, 8:00 pm  
Witness the illumination of the night. This year, lantern builders will create new monuments to speak to our shared past and hopes for the future.  
[neighbors.columbia.edu/lights2022](https://neighbors.columbia.edu/lights2022)



# Manhattanville in West Harlem Campus Plan

Construction Activities for the Next Two Weeks

**C**olumbia's long-term plan for the old Manhattanville manufacturing area will revitalize the four former industrial blocks from 125th/129th to 133rd Street between Broadway and 12<sup>th</sup> Avenue, and three small blocks along the east side of Broadway from 131st to 134th Street, into an environmentally sustainable and publicly accessible center for academic and civic life woven into the fabric of the West Harlem community.

## Construction Activities for the Weeks of October 4, 2021 and October 11, 2021

### What is Happening

#### *Columbia Business School*

##### *Site 7 (Western Site)*

- Interior fit-outs (walls, glass partitions, ceilings, flooring, millwork, glass-fiber reinforced concrete (GFRC) unit installations) and overhead mechanical, electrical, and plumbing (MEP) installation on floors 1 through 11
- Interior finishes and punchlist ongoing
- A/V work in classrooms
- Fire alarm and MEP commissioning
- Delivery and installation of furniture

##### *Site 6B (Eastern Site)*

- Completion of the exterior wall. Cleaning and punchlist work ongoing.
- Interior finishes
- A/V work in classrooms
- Fire alarm and MEP commissioning near complete
- Delivery and installation of furniture

#### *Below Grade Activity / W. 131st Street Utilities*

- Buildout work of the loading dock is progressing
- The truck ramp ceiling is being spackled and taped
- Painting is ongoing throughout

#### *Open Spaces between 130th and 131st Streets and along 12th Avenue*

- Continuation of living roof layer
- Installation of electrical conduit, cobblestone, and trench drain
- Hanover pavers/hardscape is ongoing
- Installation of water feature, furnishings, drinking fountains, and other fixtures
- Sidewalk, street lights, and street work
- Testing of systems is underway

*(Over)*

## What is Happening (continued)

### *600 W. 125th Street*

- Drilling and installation of secant piles and rigid inclusions piles for the support of excavation
- Test pit work at the south perimeter
- Soil removal from construction site
- Pile installation for Con Ed vaults
- Excavation and timber lagging installation on the north side of the property

*-Please note that all activities are subject to change based on weather and other field conditions-*

## What to Expect

### *Construction Activity*

- Regular weekday work hours: 7:00 a.m. to 6:00 p.m. Saturday and Sunday work hours: 7:00 a.m. to 5:00 p.m. After-hours permit issued for 6:00 a.m. construction start to allow for physical distancing for workers upon entry to the site. After-hours permit issued for 6:00 p.m. to 11:00 p.m. Monday through Friday for exterior wall installation to be performed at the Business School buildings.
- Material deliveries to site is ongoing

### *Temporary Traffic and Transportation Impacts*

- Refer to street signage for the west side of Broadway from 129th to 130th Streets — parking is allowed after 6:00 p.m. and on weekends
- W. 131st Street between Broadway and 12th Avenue is open for one-way westbound traffic
- The parking lane will be closed on the south side of W. 125th Street from Broadway to St. Clair Place. Parking will not be available on the south side of W. 125th Street from Broadway to the mid-block in front of the entire length of the 600 W. 125th Street construction fence.

## Need More Information?

For project updates and information, please visit [neighbors.columbia.edu](http://neighbors.columbia.edu). For questions or concerns, e-mail [projx@columbia.edu](mailto:projx@columbia.edu) or call our Services Center at 212-854-2222, 24 hours a day, seven days a week.



## Sustainable Partnerships





# Manhattanville in West Harlem Campus Plan

Construction Activities for the Next Two Weeks

**C**olumbia's long-term plan for the old Manhattanville manufacturing area will revitalize the four former industrial blocks from 125th/129th to 133rd Street between Broadway and 12<sup>th</sup> Avenue, and three small blocks along the east side of Broadway from 131st to 134th Street, into an environmentally sustainable and publicly accessible center for academic and civic life woven into the fabric of the West Harlem community.

## Construction Activities for the Weeks of October 11, 2021 and October 18, 2021

### What is Happening

#### *Columbia Business School*

##### *Site 7 (Western Site)*

- Interior fit-outs (walls, glass partitions, ceilings, flooring, millwork, glass-fiber reinforced concrete (GFRC) unit installations) and overhead mechanical, electrical, and plumbing (MEP) installation on floors 1 through 11
- Interior finishes and punchlist ongoing
- A/V work in classrooms
- Fire alarm and MEP commissioning ongoing
- Delivery and installation of furniture ongoing

##### *Site 6B (Eastern Site)*

- Completion of the exterior wall. Cleaning and punchlist work ongoing.
- Interior finishes ongoing
- A/V work in classrooms
- Fire alarm and MEP commissioning near complete
- Delivery and installation of furniture ongoing

#### *Below Grade Activity / W. 131st Street Utilities*

- Punchlist work

#### *Open Spaces between 130th and 131st Streets and along 12th Avenue*

- Continuation of living roof layer
- Installation of electrical conduit, cobblestone, and trench drain
- Hanover pavers/hardscape is ongoing
- Installation of water feature, furnishings, drinking fountains, and other fixtures
- Sidewalk, street lights, and street work
- Testing of systems is underway

*(Over)*

## What is Happening (continued)

### **600 W. 125th Street**

- Drilling and installation of caissons
- Excavation and test pit work along the south perimeter
- Soil removal from construction site
- Excavation and timber lagging installation on the north and east sides of the property

*-Please note that all activities are subject to change based on weather and other field conditions-*

## What to Expect

### **Construction Activity**

- Regular weekday work hours: 7:00 a.m. to 6:00 p.m. Saturday and Sunday work hours: 7:00 a.m. to 5:00 p.m. After-hours permit issued for 6:00 a.m. construction start to allow for physical distancing for workers upon entry to the site. After-hours permit issued for 6:00 p.m. to 11:00 p.m. Monday through Friday for exterior wall installation to be performed at the Business School buildings.
- Material deliveries to site is ongoing

### **Temporary Traffic and Transportation Impacts**

- Refer to street signage for the west side of Broadway from 129th to 130th Streets — parking is allowed after 6:00 p.m. and on weekends
- W. 131st Street between Broadway and 12th Avenue is open for one-way westbound traffic
- The parking lane will be closed on the south side of W. 125th Street from Broadway to St. Clair Place. Parking will not be available on the south side of W. 125th Street from Broadway to the mid-block in front of the entire length of the 600 W. 125th Street construction fence.

## Need More Information?

For project updates and information, please visit [neighbors.columbia.edu](https://neighbors.columbia.edu). For questions or concerns, e-mail [projx@columbia.edu](mailto:projx@columbia.edu) or call our Services Center at 212-854-2222, 24 hours a day, seven days a week.



## Sustainable Partnerships





# Manhattanville in West Harlem Campus Plan

Construction Activities for the Next Two Weeks

**C**olumbia's long-term plan for the old Manhattanville manufacturing area will revitalize the four former industrial blocks from 125th/129th to 133rd Street between Broadway and 12<sup>th</sup> Avenue, and three small blocks along the east side of Broadway from 131st to 134th Street, into an environmentally sustainable and publicly accessible center for academic and civic life woven into the fabric of the West Harlem community.

## Construction Activities for the Weeks of October 18, 2021 and October 25, 2021

### What is Happening

#### *Columbia Business School*

##### *Site 7 (Western Site)*

- Completion of the exterior wall. Cleaning, ongoing punchlist work, and water testing.
- Interior finishes and punchlist ongoing
- A/V work in classrooms
- Delivery and installation of furniture ongoing

##### *Site 6B (Eastern Site)*

- Completion of the exterior wall. Cleaning, ongoing punchlist work, and water testing.
- Interior finishes ongoing
- A/V work in classrooms
- Delivery and installation of furniture ongoing

#### *Below Grade Activity / W. 131st Street Utilities*

- Punchlist work

#### *Open Spaces between 130th and 131st Streets and along 12th Avenue*

- Continuation of living roof layer
- Installation of electrical conduit, cobblestone, and trench drain
- Hanover pavers/hardscape is ongoing
- Installation of furnishings, drinking fountains, and other fixtures
- Sidewalk, street lights, and street work
- Testing of water feature systems has commenced
- Testing of systems is underway

#### *600 W. 125th Street*

- Drilling and installation of caissons
- Excavation and test pit work along the south perimeter
- Soil removal from construction site
- Excavation, timber lagging, and excavation bracing is ongoing

*-Please note that all activities are subject to change based on weather and other field conditions-*

*(Over)*

## Construction Update

*Weeks of October 18, 2021 and October 25, 2021*

## What to Expect

### *Construction Activity*

- Regular weekday work hours: 7:00 a.m. to 6:00 p.m. Saturday and Sunday work hours: 7:00 a.m. to 5:00 p.m. After-hours permit issued for 6:00 a.m. construction start to allow for physical distancing for workers upon entry to the site. After-hours permit issued for 6:00 p.m. to 11:00 p.m. Monday through Friday for exterior wall installation to be performed at the Business School buildings.
- Material deliveries to site is ongoing

### *Temporary Traffic and Transportation Impacts*

- Refer to street signage for the west side of Broadway from 129th to 130th Streets – parking is allowed after 6:00 p.m. and on weekends
- W. 131st Street between Broadway and 12th Avenue is open for one-way westbound traffic
- The parking lane will be closed on the south side of W. 125th Street from Broadway to St. Clair Place. Parking will not be available on the south side of W. 125th Street from Broadway to the mid-block in front of the entire length of the 600 W. 125th Street construction fence.

## Need More Information?

For project updates and information, please visit [neighbors.columbia.edu](https://neighbors.columbia.edu). For questions or concerns, e-mail [projx@columbia.edu](mailto:projx@columbia.edu) or call our Services Center at 212-854-2222, 24 hours a day, seven days a week.



## Sustainable Partnerships





# Manhattanville in West Harlem Campus Plan

Construction Activities for the Next Two Weeks

**C**olumbia's long-term plan for the old Manhattanville manufacturing area will revitalize the four former industrial blocks from 125th/129th to 133rd Street between Broadway and 12<sup>th</sup> Avenue, and three small blocks along the east side of Broadway from 131st to 134th Street, into an environmentally sustainable and publicly accessible center for academic and civic life woven into the fabric of the West Harlem community.

## Construction Activities for the Weeks of October 25, 2021 and November 1, 2021

### What is Happening

#### *Columbia Business School*

##### *Site 7 (Western Site)*

- Completion of the exterior wall. Cleaning, ongoing punchlist work, and water testing.
- Interior finishes and punchlist ongoing
- A/V work in classrooms
- Delivery and installation of furniture ongoing

##### *Site 6B (Eastern Site)*

- Completion of the exterior wall. Cleaning, ongoing punchlist work, and water testing.
- Interior finishes ongoing
- A/V work in classrooms
- Delivery and installation of furniture ongoing
- Installation of guard booth, bollard and wedge barrier to begin at loading dock entrance

#### *Below Grade Activity / W. 131st Street Utilities*

- Punchlist work

#### *Open Spaces between 130th and 131st Streets and along 12th Avenue*

- Continuation of living roof layer
- Installation of electrical conduit, cobblestone, and sod
- Hanover pavers/hardscape is ongoing
- Installation of furnishings, drinking fountains, and other fixtures
- Sidewalk, street lights, and street work
- Testing of water feature systems has commenced
- Testing of systems is underway

#### *600 W. 125th Street*

- Drilling and installation of caissons
- Excavation and test pit work along the south perimeter
- Soil removal from construction site
- Excavation, timber lagging, and excavation bracing is ongoing
- Tieback installation underway

*-Please note that all activities are subject to change based on weather and other field conditions-*

*(Over)*

## What to Expect

### *Construction Activity*

- Regular weekday work hours: 7:00 a.m. to 6:00 p.m. Saturday and Sunday work hours: 7:00 a.m. to 5:00 p.m. After-hours permit issued for 6:00 a.m. construction start to allow for physical distancing for workers upon entry to the site. After-hours permit issued for 6:00 p.m. to 11:00 p.m. Monday through Friday for exterior wall installation to be performed at the Business School buildings.
- Material deliveries to site is ongoing

### *Temporary Traffic and Transportation Impacts*

- Refer to street signage for the west side of Broadway from 129th to 130th Streets – parking is allowed after 6:00 p.m. and on weekends
- W. 131st Street between Broadway and 12th Avenue is open for one-way westbound traffic
- The parking lane will be closed on the south side of W. 125th Street from Broadway to St. Clair Place. Parking will not be available on the south side of W. 125th Street from Broadway to the mid-block in front of the entire length of the 600 W. 125th Street construction fence.

## Need More Information?

For project updates and information, please visit [neighbors.columbia.edu](https://neighbors.columbia.edu). For questions or concerns, e-mail [projx@columbia.edu](mailto:projx@columbia.edu) or call our Services Center at 212-854-2222, 24 hours a day, seven days a week.



## Sustainable Partnerships





# Manhattanville in West Harlem Campus Plan

Construction Activities for the Next Two Weeks

**C**olumbia's long-term plan for the old Manhattanville manufacturing area will revitalize the four former industrial blocks from 125th/129th to 133rd Street between Broadway and 12<sup>th</sup> Avenue, and three small blocks along the east side of Broadway from 131st to 134th Street, into an environmentally sustainable and publicly accessible center for academic and civic life woven into the fabric of the West Harlem community.

## Construction Activities for the Weeks of November 1, 2021 and November 8, 2021

### What is Happening

#### *Columbia Business School*

##### *Site 7 (Western Site)*

- Completion of the exterior wall. Cleaning, ongoing punchlist work, and water testing.
- Interior finishes and punchlist ongoing
- A/V work in classrooms
- Delivery and installation of furniture ongoing

##### *Site 6B (Eastern Site)*

- Completion of the exterior wall. Cleaning, ongoing punchlist work, and water testing.
- Interior finishes ongoing
- A/V work in classrooms
- Delivery and installation of furniture ongoing
- Installation of guard booth, bollard and wedge barrier to begin at loading dock entrance

#### *Below Grade Activity / W. 131st Street Utilities*

- Punchlist work

#### *Open Spaces between 130th and 131st Streets and along 12th Avenue*

- Continuation of living roof layer
- Installation of electrical conduit, cobblestone, and sod
- Hanover pavers/hardscape is ongoing
- Installation of furnishings, drinking fountains, and other fixtures
- Sidewalk, street lights, and street work
- Testing of water feature systems has commenced
- Testing of systems is underway

#### *600 W. 125th Street*

- Drilling and installation of caissons
- Excavation and test pit work along the south perimeter
- Excavation, timber lagging, and excavation bracing is ongoing
- Tieback installation underway

*-Please note that all activities are subject to change based on weather and other field conditions-*

*(Over)*

## What to Expect

### *Construction Activity*

- Regular weekday work hours: 7:00 a.m. to 6:00 p.m. Saturday and Sunday work hours: 7:00 a.m. to 5:00 p.m. After-hours permit issued for 6:00 a.m. construction start to allow for physical distancing for workers upon entry to the site. After-hours permit issued for 6:00 p.m. to 11:00 p.m. Monday through Friday for exterior wall installation to be performed at the Business School buildings.
- Material deliveries to site is ongoing

### *Temporary Traffic and Transportation Impacts*

- Refer to street signage for the west side of Broadway from 129th to 130th Streets – parking is allowed after 6:00 p.m. and on weekends
- W. 131st Street between Broadway and 12th Avenue is open for one-way westbound traffic
- The parking lane will be closed on the south side of W. 125th Street from Broadway to St. Clair Place. Parking will not be available on the south side of W. 125th Street from Broadway to the mid-block in front of the entire length of the 600 W. 125th Street construction fence.

## Need More Information?

For project updates and information, please visit [neighbors.columbia.edu](https://neighbors.columbia.edu). For questions or concerns, e-mail [projx@columbia.edu](mailto:projx@columbia.edu) or call our Services Center at 212-854-2222, 24 hours a day, seven days a week.



## Sustainable Partnerships





# Manhattanville in West Harlem Campus Plan

Construction Activities for the Next Two Weeks

**C**olumbia's long-term plan for the old Manhattanville manufacturing area will revitalize the four former industrial blocks from 125th/129th to 133rd Street between Broadway and 12<sup>th</sup> Avenue, and three small blocks along the east side of Broadway from 131st to 134th Street, into an environmentally sustainable and publicly accessible center for academic and civic life woven into the fabric of the West Harlem community.

## Construction Activities for the Weeks of November 8, 2021 and November 15, 2021

### What is Happening

#### *Columbia Business School*

##### *Site 7 (Western Site)*

- Completion of the exterior wall. Cleaning, ongoing punchlist work, and water testing.
- Interior finishes and punchlist ongoing
- A/V work in classrooms
- Delivery and installation of furniture ongoing

##### *Site 6B (Eastern Site)*

- Completion of the exterior wall. Cleaning, ongoing punchlist work, and water testing.
- Interior finishes ongoing
- A/V work in classrooms
- Delivery and installation of furniture ongoing
- Installation of guard booth, bollard and wedge barrier ongoing at loading dock entrance

#### *Below Grade Activity / W. 131st Street Utilities*

- Punchlist work

#### *Open Spaces between 130th and 131st Streets and along 12th Avenue*

- Continuation of living roof layer
- Hanover pavers/hardscape is ongoing
- Installation of furnishings, drinking fountains, and other fixtures
- Sidewalk, street lights, and street work
- Testing of systems is ongoing

#### *600 W. 125th Street*

- Drilling and installation of caissons
- Excavation and test pit work along the south perimeter
- Excavation, timber lagging, and excavation bracing is ongoing
- Tieback installation underway

*-Please note that all activities are subject to change based on weather and other field conditions-*

*(Over)*

## What to Expect

### *Construction Activity*

- Regular weekday work hours: 7:00 a.m. to 6:00 p.m. Saturday and Sunday work hours: 7:00 a.m. to 5:00 p.m. After-hours permit issued for 6:00 a.m. construction start to allow for physical distancing for workers upon entry to the site. After-hours permit issued for 6:00 p.m. to 11:00 p.m. Monday through Friday for exterior wall installation to be performed at the Business School buildings.
- Material deliveries to site is ongoing

### *Temporary Traffic and Transportation Impacts*

- Refer to street signage for the west side of Broadway from 129th to 130th Streets – parking is allowed after 6:00 p.m. and on weekends
- W. 131st Street between Broadway and 12th Avenue is open for one-way westbound traffic
- The parking lane will be closed on the south side of W. 125th Street from Broadway to St. Clair Place. Parking will not be available on the south side of W. 125th Street from Broadway to the mid-block in front of the entire length of the 600 W. 125th Street construction fence.

## Need More Information?

For project updates and information, please visit [neighbors.columbia.edu](https://neighbors.columbia.edu). For questions or concerns, e-mail [projx@columbia.edu](mailto:projx@columbia.edu) or call our Services Center at 212-854-2222, 24 hours a day, seven days a week.



## Sustainable Partnerships





# Manhattanville in West Harlem Campus Plan

Construction Activities for the Next Two Weeks

**C**olumbia's long-term plan for the old Manhattanville manufacturing area will revitalize the four former industrial blocks from 125th/129th to 133rd Street between Broadway and 12<sup>th</sup> Avenue, and three small blocks along the east side of Broadway from 131st to 134th Street, into an environmentally sustainable and publicly accessible center for academic and civic life woven into the fabric of the West Harlem community.

## Construction Activities for the Weeks of November 15, 2021 and November 22, 2021

### What is Happening

#### *Columbia Business School*

##### *Site 7 (Western Site)*

- Completion of the exterior wall. Cleaning, ongoing punchlist work, and water testing.
- Interior finishes and punchlist ongoing
- A/V work in classrooms
- Delivery and installation of furniture ongoing

##### *Site 6B (Eastern Site)*

- Completion of the exterior wall. Cleaning, ongoing punchlist work, and water testing.
- Interior finishes ongoing
- A/V work in classrooms
- Delivery and installation of furniture ongoing
- Installation of guard booth, bollard and wedge barrier ongoing at loading dock entrance

#### *Below Grade Activity / W. 131st Street Utilities*

- Punchlist work

#### *Open Spaces between 130th and 131st Streets and along 12th Avenue*

- Continuation of living roof layer
- Hanover pavers/hardscape is ongoing
- Installation of furnishings, drinking fountains, and other fixtures
- Sidewalk, street lights, and street work
- Testing of systems is ongoing

#### *600 W. 125th Street*

- Drilling crane pad caissons and support of excavation installation
- Secant drilling along the south perimeter
- Excavation, soil removal, timber lagging, and bracing is ongoing

*-Please note that all activities are subject to change based on weather and other field conditions-*

*(Over)*

## What to Expect

### *Construction Activity*

- Regular weekday work hours: 7:00 a.m. to 6:00 p.m. Saturday and Sunday work hours: 7:00 a.m. to 5:00 p.m. After-hours permit issued for 6:00 a.m. construction start to allow for physical distancing for workers upon entry to the site. After-hours permit issued for 6:00 p.m. to 11:00 p.m. Monday through Friday for exterior wall installation to be performed at the Business School buildings.
- Material deliveries to site is ongoing

### *Temporary Traffic and Transportation Impacts*

- Refer to street signage for the west side of Broadway from 129th to 130th Streets – parking is allowed after 6:00 p.m. and on weekends
- W. 131st Street between Broadway and 12th Avenue is open for one-way westbound traffic
- The parking lane will be closed on the south side of W. 125th Street from Broadway to St. Clair Place. Parking will not be available on the south side of W. 125th Street from Broadway to the mid-block in front of the entire length of the 600 W. 125th Street construction fence.

## Need More Information?

For project updates and information, please visit [neighbors.columbia.edu](https://neighbors.columbia.edu). For questions or concerns, e-mail [projx@columbia.edu](mailto:projx@columbia.edu) or call our Services Center at 212-854-2222, 24 hours a day, seven days a week.



## Sustainable Partnerships





# Manhattanville in West Harlem Campus Plan

Construction Activities for the Next Two Weeks

**C**olumbia's long-term plan for the old Manhattanville manufacturing area will revitalize the four former industrial blocks from 125th/129th to 133rd Street between Broadway and 12<sup>th</sup> Avenue, and three small blocks along the east side of Broadway from 131st to 134th Street, into an environmentally sustainable and publicly accessible center for academic and civic life woven into the fabric of the West Harlem community.

## Construction Activities for the Weeks of November 22, 2021 and November 29, 2021

### What is Happening

#### *Columbia Business School*

##### *Site 7 (Western Site)*

- Completion of the exterior wall—cleaning and punchlist work ongoing
- Interior finishes and punchlist ongoing
- A/V work in classrooms is substantially complete
- Delivery and installation of furniture ongoing

##### *Site 6B (Eastern Site)*

- Completion of the exterior wall
- Punchlisting and interior finishes ongoing
- A/V work in classrooms is substantially complete
- Delivery and installation of furniture ongoing
- Installation of guard booth, bollard and wedge barrier ongoing at loading dock entrance

#### *Below Grade Activity / W. 131st Street Utilities*

- Punchlist work

#### *Open Spaces between 130th and 131st Streets and along 12th Avenue*

- Sidewalk, street lights, and street work
- Commissioning / testing of systems is ongoing
- Punchlist work is underway

#### *600 W. 125th Street*

- Drilling crane pad caissons and support of excavation installation
- Secant drilling along the south perimeter
- Secant pile trimming
- Excavation, soil removal, timber lagging, and bracing is ongoing

*-Please note that all activities are subject to change based on weather and other field conditions-*

*(Over)*

## What to Expect

### *Construction Activity*

- Regular weekday work hours: 7:00 a.m. to 6:00 p.m. Saturday and Sunday work hours: 7:00 a.m. to 5:00 p.m. After-hours permit issued for 6:00 a.m. construction start to allow for physical distancing for workers upon entry to the site. After-hours permit issued for 6:00 p.m. to 11:00 p.m. Monday through Friday for exterior wall installation to be performed at the Business School buildings.
- Material deliveries to site is ongoing

### *Temporary Traffic and Transportation Impacts*

- Refer to street signage for the west side of Broadway from 129th to 130th Streets – parking is allowed after 6:00 p.m. and on weekends
- W. 131st Street between Broadway and 12th Avenue will be closed Monday, November 22 through Tuesday, November 23 for milling and repaving of the street
- The parking lane will be closed on the south side of W. 125th Street from Broadway to St. Clair Place. Parking will not be available on the south side of W. 125th Street from Broadway to the mid-block in front of the entire length of the 600 W. 125th Street construction fence.

## Need More Information?

For project updates and information, please visit [neighbors.columbia.edu](https://neighbors.columbia.edu). For questions or concerns, e-mail [projx@columbia.edu](mailto:projx@columbia.edu) or call our Services Center at 212-854-2222, 24 hours a day, seven days a week.



## Sustainable Partnerships





# Manhattanville in West Harlem Campus Plan

Construction Activities for the Next Two Weeks

**C**olumbia's long-term plan for the old Manhattanville manufacturing area will revitalize the four former industrial blocks from 125th/129th to 133rd Street between Broadway and 12<sup>th</sup> Avenue, and three small blocks along the east side of Broadway from 131st to 134th Street, into an environmentally sustainable and publicly accessible center for academic and civic life woven into the fabric of the West Harlem community.

## Construction Activities for the Weeks of December 6, 2021 and December 13, 2021

### What is Happening

#### *Columbia Business School*

##### *Site 7 (Western Site)*

- Interior finishes and punchlist ongoing
- A/V work in classrooms is substantially complete
- Delivery and installation of furniture ongoing

##### *Site 6B (Eastern Site)*

- Interior finishes and punchlist ongoing
- Delivery and installation of furniture ongoing
- Installation of guard booth, bollard and wedge barrier ongoing at loading dock entrance

#### *Below Grade Activity / W. 131st Street Utilities*

- Commissioning / testing of systems is ongoing
- Punchlist work

#### *Open Spaces between 130th and 131st Streets and along 12th Avenue*

- Sidewalk, street lights, and street work
- Commissioning / testing of systems is ongoing
- Punchlist work is underway

#### *600 W. 125th Street*

- Drilling crane pad caissons and support of excavation installation
- Secant pile trimming
- Excavation, soil removal, timber lagging, and bracing is ongoing
- Drill rig demobilization Dec. 6 to Dec. 8. Staging will be completed by 6 p.m. each day, with equipment pickup between 8 p.m. and 9 p.m. Flag people will be present to temporarily stop any traffic and pedestrians as required.
- Some overnight work on West 125th Street for utilities will begin the week of December 13

*-Please note that all activities are subject to change based on weather and other field conditions-*

*(Over)*

## Construction Update

*Weeks of December 6, 2021 and December 13, 2021*

### What to Expect

#### *Construction Activity*

- Regular weekday work hours: 7:00 a.m. to 6:00 p.m. Saturday and Sunday work hours: 7:00 a.m. to 5:00 p.m. After-hours permit issued for 6:00 a.m. construction start to allow for physical distancing for workers upon entry to the site. After-hours permit issued for 6:00 p.m. to 11:00 p.m. Monday through Friday for exterior wall installation to be performed at the Business School buildings.
- Material deliveries to site is ongoing

#### *Temporary Traffic and Transportation Impacts*

- Refer to street signage for the west side of Broadway from 129th to 130th Streets – parking is allowed after 6:00 p.m. and on weekends
- The parking lane will be closed on the south side of W. 125th Street from Broadway to St. Clair Place. Parking will not be available on the south side of W. 125th Street from Broadway to the mid-block in front of the entire length of the 600 W. 125th Street construction fence.

### Need More Information?

For project updates and information, please visit [neighbors.columbia.edu](https://neighbors.columbia.edu). For questions or concerns, e-mail [projx@columbia.edu](mailto:projx@columbia.edu) or call our Services Center at 212-854-2222, 24 hours a day, seven days a week.



### Sustainable Partnerships



 COLUMBIA UNIVERSITY  
Facilities and Operations



# Manhattanville in West Harlem Campus Plan

Construction Activities for the Next Two Weeks

**C**olumbia's long-term plan for the old Manhattanville manufacturing area will revitalize the four former industrial blocks from 125th/129th to 133rd Street between Broadway and 12<sup>th</sup> Avenue, and three small blocks along the east side of Broadway from 131st to 134th Street, into an environmentally sustainable and publicly accessible center for academic and civic life woven into the fabric of the West Harlem community.

## Construction Activities for the Weeks of December 13, 2021 and December 20, 2021

### What is Happening

#### *Columbia Business School*

##### *Site 7 (Western Site)*

- Interior finishes and punchlist ongoing
- A/V work in classrooms is substantially complete
- Delivery and installation of furniture ongoing

##### *Site 6B (Eastern Site)*

- Interior finishes and punchlist ongoing
- Delivery and installation of furniture ongoing
- Installation of guard booth, bollard and wedge barrier ongoing at loading dock entrance

#### *Below Grade Activity / W. 131st Street Utilities*

- Commissioning / testing of systems is ongoing
- Punchlist work

#### *Open Spaces between 130th and 131st Streets and along 12th Avenue*

- Sidewalk, street lights, and street work
- Commissioning / testing of systems is ongoing
- Punchlist work is underway

#### *600 W. 125th Street*

- Secant pile trimming
- Excavation, soil removal, timber lagging, and bracing is ongoing
- Cap beam installation
- Some overnight work on West 125th Street for utilities will begin the week of December 13

*-Please note that all activities are subject to change based on weather and other field conditions-*

*(Over)*

## Construction Update

*Weeks of December 13, 2021 and December 20, 2021*

### What to Expect

#### *Construction Activity*

- Regular weekday work hours: 7:00 a.m. to 6:00 p.m. Saturday and Sunday work hours: 7:00 a.m. to 5:00 p.m. After-hours permit issued for 6:00 a.m. construction start to allow for physical distancing for workers upon entry to the site. After-hours permit issued for 6:00 p.m. to 11:00 p.m. Monday through Friday for exterior wall installation to be performed at the Business School buildings.
- Material deliveries to site is ongoing

#### *Temporary Traffic and Transportation Impacts*

- Refer to street signage for the west side of Broadway from 129th to 130th Streets – parking is allowed after 6:00 p.m. and on weekends
- The parking lane will be closed on the south side of W. 125th Street from Broadway to St. Clair Place. Parking will not be available on the south side of W. 125th Street from Broadway to the mid-block in front of the entire length of the 600 W. 125th Street construction fence.

### Need More Information?

For project updates and information, please visit [neighbors.columbia.edu](https://neighbors.columbia.edu). For questions or concerns, e-mail [projx@columbia.edu](mailto:projx@columbia.edu) or call our Services Center at 212-854-2222, 24 hours a day, seven days a week.



### Sustainable Partnerships





# Manhattanville in West Harlem Campus Plan

Construction Activities for the Next Two Weeks

**C**olumbia's long-term plan for the old Manhattanville manufacturing area will revitalize the four former industrial blocks from 125th/129th to 133rd Street between Broadway and 12<sup>th</sup> Avenue, and three small blocks along the east side of Broadway from 131st to 134th Street, into an environmentally sustainable and publicly accessible center for academic and civic life woven into the fabric of the West Harlem community.

## Construction Activities for the Weeks of December 20, 2021 and December 27, 2021

### What is Happening

#### *Columbia Business School*

##### *Site 7 (Western Site)*

- Interior finishes and punchlist ongoing
- A/V work in classrooms is substantially complete
- Delivery and installation of furniture ongoing

##### *Site 6B (Eastern Site)*

- Interior finishes and punchlist ongoing
- Delivery and installation of furniture ongoing
- Installation of guard booth, bollard and wedge barrier ongoing at loading dock entrance

#### *Below Grade Activity / W. 131st Street Utilities*

- Commissioning / testing of systems is ongoing
- Punchlist work

#### *Open Spaces between 130th and 131st Streets and along 12th Avenue*

- Sidewalk, street lights, and street work
- Commissioning / testing of systems is ongoing
- Punchlist work is underway

#### *600 W. 125th Street*

- Secant pile trimming
- Excavation, soil removal, timber lagging, and bracing is ongoing
- Cap beam installation
- Overnight utilities work on W. 125th Street will take place in the late evening through the early morning hours

*-Please note that all activities are subject to change based on weather and other field conditions -*

*(Over)*

## What to Expect

### *Construction Activity*

- Regular weekday work hours: 7:00 a.m. to 6:00 p.m. Saturday and Sunday work hours: 7:00 a.m. to 5:00 p.m. After-hours permit issued for 6:00 a.m. construction start to allow for physical distancing for workers upon entry to the site.
- Material deliveries to site is ongoing

### *Temporary Traffic and Transportation Impacts*

- Refer to street signage for the west side of Broadway from 129th to 130th Streets – parking is allowed after 6:00 p.m. and on weekends
- The parking lane will be closed on the south side of W. 125th Street from Broadway to St. Clair Place. Parking will not be available on the south side of W. 125th Street from Broadway to the mid-block in front of the entire length of the 600 W. 125th Street construction fence.

## Need More Information?

For project updates and information, please visit [neighbors.columbia.edu](https://neighbors.columbia.edu). For questions or concerns, e-mail [projx@columbia.edu](mailto:projx@columbia.edu) or call our Services Center at 212-854-2222, 24 hours a day, seven days a week.



## Sustainable Partnerships





# Manhattanville in West Harlem Campus Plan

Construction Activities for the Next Two Weeks

**C**olumbia's long-term plan for the old Manhattanville manufacturing area will revitalize the four former industrial blocks from 125th/129th to 133rd Street between Broadway and 12<sup>th</sup> Avenue, and three small blocks along the east side of Broadway from 131st to 134th Street, into an environmentally sustainable and publicly accessible center for academic and civic life woven into the fabric of the West Harlem community.

## Construction Activities for the Weeks of December 27, 2021 and January 3, 2022

### What is Happening

#### *Columbia Business School*

- Removal of plastic barricades during the week of December 27

#### *Site 7 (Western Site)*

- Interior finishes and punchlist ongoing

#### *Site 6B (Eastern Site)*

- Interior finishes and punchlist ongoing
- Installation of guard booth, bollard and wedge barrier ongoing at loading dock entrance

#### *Below Grade Activity / W. 131st Street Utilities*

- Commissioning / testing of systems is ongoing
- Punchlist work

#### *Open Spaces between 130th and 131st Streets and along 12th Avenue*

- Sidewalk, street lights, and street work
- Commissioning / testing of systems is ongoing
- Punchlist work is underway

#### *600 W. 125th Street*

- Secant pile trimming
- Excavation, soil removal, timber lagging, and bracing is ongoing
- Dewatering system setup
- Cap beam installation and working platform
- Overnight utilities work on W. 125th Street will take place in the late evening through the early morning hours

*-Please note that all activities are subject to change based on weather and other field conditions-*

*(Over)*

## Construction Update

*Weeks of December 27, 2021 and January 3, 2022*

### What to Expect

#### *Construction Activity*

- Regular weekday work hours: 7:00 a.m. to 6:00 p.m. Saturday and Sunday work hours: 7:00 a.m. to 5:00 p.m. After-hours permit issued for 6:00 a.m. construction start to allow for physical distancing for workers upon entry to the site.
- Material deliveries to site is ongoing

#### *Temporary Traffic and Transportation Impacts*

- Refer to street signage for the west side of Broadway from 129th to 130th Streets – parking is allowed after 6:00 p.m. and on weekends
- The parking lane will be closed on the south side of W. 125th Street from Broadway to St. Clair Place. Parking will not be available on the south side of W. 125th Street from Broadway to the mid-block in front of the entire length of the 600 W. 125th Street construction fence.

### Need More Information?

For project updates and information, please visit [neighbors.columbia.edu](https://neighbors.columbia.edu). For questions or concerns, e-mail [projx@columbia.edu](mailto:projx@columbia.edu) or call our Services Center at 212-854-2222, 24 hours a day, seven days a week.



### Sustainable Partnerships



 COLUMBIA UNIVERSITY  
Facilities and Operations



# Manhattanville in West Harlem Campus Plan

Construction Activities for the Next Two Weeks

**C**olumbia's long-term plan for the old Manhattanville manufacturing area will revitalize the four former industrial blocks from 125th/129th to 133rd Street between Broadway and 12<sup>th</sup> Avenue, and three small blocks along the east side of Broadway from 131st to 134th Street, into an environmentally sustainable and publicly accessible center for academic and civic life woven into the fabric of the West Harlem community.

## Construction Activities for the Weeks of January 10, 2022 and January 17, 2022

### What is Happening

#### *Columbia Business School*

- Punchlist work ongoing

#### *Below Grade Activity / W. 131st Street Utilities*

- Punchlist work ongoing

#### *Open Spaces between 130th and 131st Streets and along 12th Avenue*

- Punchlist work ongoing

#### *600 W. 125th Street*

- Secant pile trimming
- Excavation, soil removal, timber lagging, and bracing is ongoing
- Dewatering system setup
- Cap beam installation and working platform
- Installation of mud slab, waterproofing, and rebar and slab for elevator pit
- Overnight utilities work on W. 125th Street will continue in the late evening through the early morning hours

*-Please note that all activities are subject to change based on weather and other field conditions-*

### What to Expect

#### *Construction Activity*

- Regular working hours are 7:00 a.m. to 6:00 p.m. Monday to Friday, with hours adjusted within that window depending on the construction activity. Some work may be performed on weekends from 9:00 a.m. to 5:00 p.m. and after hours in accordance with all necessary permits from the New York City Department of Buildings. Note that contractors may mobilize on site approximately 30 to 45 minutes before work commences.

*(Over)*

## Construction Update

*Weeks of January 10, 2022 and January 17, 2022*

### *Temporary Traffic and Transportation Impacts*

- Refer to street signage for the west side of Broadway from 129th to 130th Streets – parking is allowed after 6:00 p.m. and on weekends
- The parking lane will be closed on the south side of W. 125th Street from Broadway to St. Clair Place. Parking will not be available on the south side of W. 125th Street from Broadway to the mid-block in front of the entire length of the 600 W. 125th Street construction fence.

### Need More Information?

For project updates and information, please visit [neighbors.columbia.edu](https://neighbors.columbia.edu). For questions or concerns, e-mail [projx@columbia.edu](mailto:projx@columbia.edu) or call our Services Center at 212-854-2222, 24 hours a day, seven days a week.



### Sustainable Partnerships



 COLUMBIA UNIVERSITY  
Facilities and Operations



# Manhattanville in West Harlem Campus Plan

Construction Activities for the Next Two Weeks

**C**olumbia's long-term plan for the old Manhattanville manufacturing area will revitalize the four former industrial blocks from 125th/129th to 133rd Street between Broadway and 12<sup>th</sup> Avenue, and three small blocks along the east side of Broadway from 131st to 134th Street, into an environmentally sustainable and publicly accessible center for academic and civic life woven into the fabric of the West Harlem community.

## Construction Activities for the Weeks of January 24, 2022 and January 31, 2022

### 600 W. 125th Street

#### *Current Phase of Construction: Excavation and Foundation:*

- Noisy work should be expected during most days during this phase of construction
- Excavation and foundation is anticipated to be complete by the end of the first quarter 2022

#### *What is Happening During the Next Two Weeks:*

- Secant pile trimming, excavation, soil removal, timber lagging, and bracing is ongoing
- Dewatering system setup
- Cap beam installation and working platform
- Installation of mud slab, waterproofing, and rebar and slab for elevator pit
- Overnight utilities work on W. 125th Street will begin from 10:00 p.m. to 6:00 a.m., pending the approval of required permits
- Work for new egress stair at 31 Tiemann courtyard will commence
- Saturday work will be performed from 9:00 a.m. to 5:00 p.m. and will produce consistent noise as during the week

*-Please note that all activities are subject to change based on weather and other field conditions-*

#### *What to Expect*

- Regular working hours are 7:00 a.m. to 6:00 p.m. Monday to Friday, with hours adjusted within that window depending on the construction activity. Some work may be performed on weekends from 9:00 a.m. to 5:00 p.m. and after hours in accordance with all necessary permits from the New York City Department of Buildings. Note that contractors may mobilize on site approximately 30 to 45 minutes before work commences.
- Although contractors carefully stage construction activities to minimize disruption to the surrounding community, the nature of construction work is such that some disruptions will occur. Expect some noise, vibration, dust, and other related impacts due to construction. Visit [neighbors.columbia.edu/content/600-w-125th-street#/cu\\_accordion\\_item-4958](https://neighbors.columbia.edu/content/600-w-125th-street#/cu_accordion_item-4958) to learn about our comprehensive clean construction program and mitigation protocols.

*(Over)*

## Construction Update

*Weeks of January 24, 2022 and January 31, 2022*

### *What to Expect (continued)*

- The parking lane will be closed on the south side of W. 125th Street from Broadway to St. Clair Place. Parking will not be available on the south side of W. 125th Street from Broadway to the mid-block in front of the entire length of the 600 W. 125th Street construction fence.

### Construction Progress Photos



Geffen Hall and The Square, looking east



Kravis Hall and The Square, looking west



An aerial view of The Square



600 W. 125th Street, looking south

### Need More Information?

For project updates and information, please visit [neighbors.columbia.edu](https://neighbors.columbia.edu). For questions or concerns, e-mail [projx@columbia.edu](mailto:projx@columbia.edu) or call our Services Center at 212-854-2222, 24 hours a day, seven days a week.

### Sustainable Partnerships





# Manhattanville in West Harlem Campus Plan

Construction Activities for the Next Two Weeks

**C**olumbia's long-term plan for the old Manhattanville manufacturing area will revitalize the four former industrial blocks from 125th/129th to 133rd Street between Broadway and 12<sup>th</sup> Avenue, and three small blocks along the east side of Broadway from 131st to 134th Street, into an environmentally sustainable and publicly accessible center for academic and civic life woven into the fabric of the West Harlem community.

## Construction Activities for the Weeks of January 31, 2022 and February 7, 2022

### 600 W. 125th Street

#### *Current Phase of Construction: Excavation and Foundation:*

- Noisy work should be expected during most days during this phase of construction
- Excavation and foundation is anticipated to be complete by the end of the first quarter of 2022

#### *What is Happening During the Next Two Weeks:*

- Beginning Monday, January 31, overnight utilities work will be performed on W. 125th Street from 10:00 p.m. to 6:00 a.m. This work is anticipated to be complete by the end of February.
- Pile trimming, excavation, soil removal, timber lagging, and bracing is ongoing
- Dewatering system setup and dewatering will be forthcoming
- Cap beam installation
- Installation of mud slab, waterproofing, and rebar and slab for elevator pit
- Crane pad grouting and lagging
- Work for new egress stair at 31 Tiemann courtyard
- Saturday work will be performed from 9:00 a.m. to 5:00 p.m. and will produce consistent noise as during the week

*-Please note that all activities are subject to change based on weather and other field conditions-*

#### *What to Expect*

- Regular working hours are 7:00 a.m. to 6:00 p.m. Monday to Friday, with hours adjusted within that window depending on the construction activity. Some work may be performed on weekends from 9:00 a.m. to 5:00 p.m. and after hours in accordance with all necessary permits from the New York City Department of Buildings. Note that contractors may mobilize on site approximately 30 to 45 minutes before work commences.
- Although contractors carefully stage construction activities to minimize disruption to the surrounding community, the nature of construction work is such that some disruptions will occur. Expect some noise, vibration, dust, and other related impacts due to construction. Visit [neighbors.columbia.edu/content/600-w-125th-street#/cu\\_accordion\\_item-4958](https://neighbors.columbia.edu/content/600-w-125th-street#/cu_accordion_item-4958) to learn about our comprehensive clean construction program and mitigation protocols.

*(Over)*

## Construction Update

*Weeks of January 31, 2022 and February 7, 2022*

### *What to Expect (continued)*

- The parking lane will be closed on the south side of W. 125th Street from Broadway to St. Clair Place. Parking will not be available on the south side of W. 125th Street from Broadway to the mid-block in front of the entire length of the 600 W. 125th Street construction fence.
- Refer to street signage for the west side of Broadway from 129th to 130th Streets — parking is allowed from 7:00 p.m. to 2:00 a.m., and on weekends

### Construction Progress Photos



Geffen Hall and The Square, looking east



Kravis Hall and The Square, looking west



600 W. 125th Street, looking southwest



600 W. 125th Street, looking east

### Need More Information?

For project updates and information, please visit [neighbors.columbia.edu](https://neighbors.columbia.edu). For questions or concerns, e-mail [projx@columbia.edu](mailto:projx@columbia.edu) or call our Services Center at 212-854-2222, 24 hours a day, seven days a week.

### Sustainable Partnerships





# Manhattanville in West Harlem Campus Plan

Construction Activities for the Next Two Weeks

**C**olumbia's long-term plan for the old Manhattanville manufacturing area will revitalize the four former industrial blocks from 125th/129th to 133rd Street between Broadway and 12<sup>th</sup> Avenue, and three small blocks along the east side of Broadway from 131st to 134th Street, into an environmentally sustainable and publicly accessible center for academic and civic life woven into the fabric of the West Harlem community.

## Construction Activities for the Weeks of February 7, 2022 and February 14, 2022

### 600 W. 125th Street

#### *Current Phase of Construction: Excavation and Foundation:*

- Noisy work should be expected during most days during this phase of construction
- Excavation and foundation is anticipated to be complete by the end of the first quarter of 2022

#### *What is Happening During the Next Two Weeks:*

- Overnight utilities work is being performed on W. 125th Street from 10:00 p.m. to 6:00 a.m. This work is anticipated to be complete by the end of February.
- Pile trimming, excavation, soil removal, timber lagging, and bracing is ongoing
- Dewatering system setup and dewatering will be forthcoming
- Cap beam installation
- Installation of mud slab, waterproofing, and rebar and slab for elevator pit
- Crane pad grouting and lagging
- Work for new egress stair at 31 Tiemann courtyard
- Saturday work will be performed from 9:00 a.m. to 5:00 p.m. and will produce consistent noise as during the week

*-Please note that all activities are subject to change based on weather and other field conditions-*

#### *What to Expect*

- Regular working hours are 7:00 a.m. to 6:00 p.m. Monday to Friday, with hours adjusted within that window depending on the construction activity. After-hours work will be performed between 10:00 p.m. to 6:00 a.m., and may occur on weekends from 9:00 a.m. to 5:00 p.m. in accordance with all necessary permits from the New York City Department of Buildings. Note that contractors may mobilize on site approximately 30 to 45 minutes before work commences.
- Although contractors carefully stage construction activities to minimize disruption to the surrounding community, the nature of construction work is such that some disruptions will occur. Expect some noise, vibration, dust, and other related impacts due to construction. Visit [neighbors.columbia.edu/content/600-w-125th-street#/cu\\_accordion\\_item\\_4958](https://neighbors.columbia.edu/content/600-w-125th-street#/cu_accordion_item_4958) to learn about our comprehensive clean construction program and mitigation protocols.

*(Over)*

## Construction Update

*Weeks of February 7, 2022 and February 14, 2022*

### *What to Expect (continued)*

- The parking lane will be closed on the south side of W. 125th Street from Broadway to St. Clair Place. Parking will not be available on the south side of W. 125th Street from Broadway to the mid-block in front of the entire length of the 600 W. 125th Street construction fence.
- Refer to street signage for the west side of Broadway from 129th to 130th Streets — parking is allowed from 7:00 p.m. to 2:00 a.m., and on weekends

### Construction Progress Photos



Geffen Hall and The Square, looking east



Kravis Hall and The Square, looking west



600 W. 125th Street, looking west



600 W. 125th Street, looking southeast

### Need More Information?

For project updates and information, please visit [neighbors.columbia.edu](https://neighbors.columbia.edu). For questions or concerns, e-mail [projx@columbia.edu](mailto:projx@columbia.edu) or call our Services Center at 212-854-2222, 24 hours a day, seven days a week.

### Sustainable Partnerships





# Manhattanville in West Harlem Campus Plan

Construction Activities for the Next Two Weeks

**C**olumbia's long-term plan for the old Manhattanville manufacturing area will revitalize the four former industrial blocks from 125th/129th to 133rd Street between Broadway and 12<sup>th</sup> Avenue, and three small blocks along the east side of Broadway from 131st to 134th Street, into an environmentally sustainable and publicly accessible center for academic and civic life woven into the fabric of the West Harlem community.

## Construction Activities for the Weeks of February 14, 2022 and February 21, 2022

### 600 W. 125th Street

#### *Current Phase of Construction: Excavation and Foundation:*

- Noisy work should be expected during most days during this phase of construction
- Excavation and foundation is anticipated to be complete by the end of the first quarter of 2022

#### *What is Happening During the Next Two Weeks:*

- Overnight utilities work is being performed on W. 125th Street from 10:00 p.m. to 6:00 a.m. This work is anticipated to be complete by the end of February.
- Pile trimming, excavation, soil removal, timber lagging, and bracing is ongoing
- Dewatering system setup and dewatering will be forthcoming
- Cap beam installation
- Installation of mud slab, waterproofing, and rebar and slab for elevator pit
- Crane pad grouting and lagging
- Work for new egress stair at 31 Tiemann courtyard
- Saturday work will be performed from 9:00 a.m. to 5:00 p.m. and will produce consistent noise as during the week

*-Please note that all activities are subject to change based on weather and other field conditions-*

#### *What to Expect*

- Regular working hours are 7:00 a.m. to 6:00 p.m. Monday to Friday, with hours adjusted within that window depending on the construction activity. After-hours work will be performed between 10:00 p.m. to 6:00 a.m., and may occur on weekends from 9:00 a.m. to 5:00 p.m. in accordance with all necessary permits from the New York City Department of Buildings. Note that contractors may mobilize on site approximately 30 to 45 minutes before work commences.
- Although contractors carefully stage construction activities to minimize disruption to the surrounding community, the nature of construction work is such that some disruptions will occur. Expect some noise, vibration, dust, and other related impacts due to construction. Visit [neighbors.columbia.edu/content/600-w-125th-street#/cu\\_accordion\\_item\\_4958](https://neighbors.columbia.edu/content/600-w-125th-street#/cu_accordion_item_4958) to learn about our comprehensive clean construction program and mitigation protocols.

*(Over)*

## Construction Update

*Weeks of February 14, 2022 and February 21, 2022*

### *What to Expect (continued)*

- The parking lane will be closed on the south side of W. 125th Street from Broadway to St. Clair Place. Parking will not be available on the south side of W. 125th Street from Broadway to the mid-block in front of the entire length of the 600 W. 125th Street construction fence.
- Refer to street signage for the west side of Broadway from 129th to 130th Streets — parking is allowed from 7:00 p.m. to 2:00 a.m., and on weekends

### Construction Progress Photos



Geffen Hall and The Square, looking east



Kravis Hall and The Square, looking west



600 W. 125th Street, looking west



600 W. 125th Street, looking southeast

### Need More Information?

For project updates and information, please visit [neighbors.columbia.edu](https://neighbors.columbia.edu). For questions or concerns, e-mail [projx@columbia.edu](mailto:projx@columbia.edu) or call our Services Center at 212-854-2222, 24 hours a day, seven days a week.

### Sustainable Partnerships





# Manhattanville in West Harlem Campus Plan

Construction Activities for the Next Two Weeks

**C**olumbia's long-term plan for the old Manhattanville manufacturing area will revitalize the four former industrial blocks from 125th/129th to 133rd Street between Broadway and 12<sup>th</sup> Avenue, and three small blocks along the east side of Broadway from 131st to 134th Street, into an environmentally sustainable and publicly accessible center for academic and civic life woven into the fabric of the West Harlem community.

## Construction Activities for the Weeks of February 21, 2022 and February 28, 2022

### 600 W. 125th Street

#### *Current Phase of Construction: Excavation and Foundation:*

- Noisy work should be expected during most days during this phase of construction
- Excavation and foundation is anticipated to be complete by the end of the second quarter of 2022

#### *What is Happening During the Next Two Weeks:*

- Overnight utilities work is being performed on W. 125th Street from 10:00 p.m. to 6:00 a.m. This work is anticipated to be complete by the end of February.
- Pile trimming
- Dewatering system setup and dewatering will be forthcoming
- Cap beam installation
- Work for new egress stair at 31 Tiemann courtyard
- Saturday work will be performed from 9:00 a.m. to 5:00 p.m. and will produce consistent noise as during the week

*-Please note that all activities are subject to change based on weather and other field conditions-*

#### *What to Expect*

- Regular working hours are 7:00 a.m. to 6:00 p.m. Monday to Friday, with hours adjusted within that window depending on the construction activity. After-hours work will be performed between 10:00 p.m. to 6:00 a.m., and may occur on weekends from 9:00 a.m. to 5:00 p.m. in accordance with all necessary permits from the New York City Department of Buildings. Note that contractors may mobilize on site approximately 30 to 45 minutes before work commences.
- Although contractors carefully stage construction activities to minimize disruption to the surrounding community, the nature of construction work is such that some disruptions will occur. Expect some noise, vibration, dust, and other related impacts due to construction. Visit [neighbors.columbia.edu/content/600-w-125th-street#/cu\\_accordion\\_item-4958](https://neighbors.columbia.edu/content/600-w-125th-street#/cu_accordion_item-4958) to learn about our comprehensive clean construction program and mitigation protocols.

*(Over)*

## Construction Update

*Weeks of February 21, 2022 and February 28, 2022*

### *What to Expect (continued)*

- The parking lane will be closed on the south side of W. 125th Street from Broadway to St. Clair Place. Parking will not be available on the south side of W. 125th Street from Broadway to the mid-block in front of the entire length of the 600 W. 125th Street construction fence.
- Refer to street signage for the west side of Broadway from 129th to 130th Streets — parking is allowed from 7:00 p.m. to 2:00 a.m., and on weekends

## Construction Progress Photos



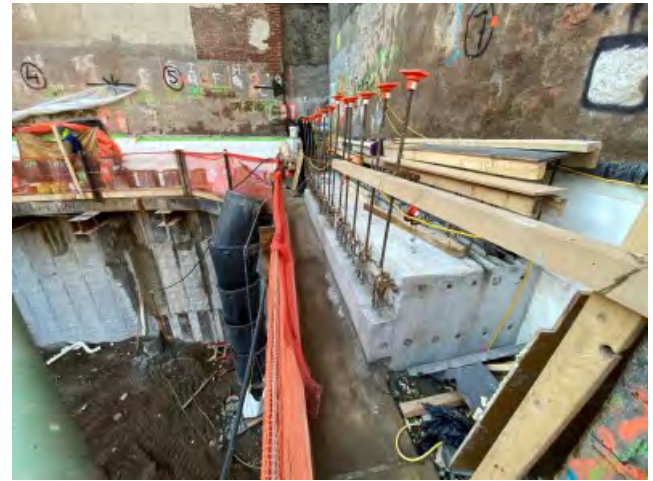
David Geffen Hall and The Square, looking east



Henry R. Kravis Hall and The Square, looking west



600 W. 125th Street, looking northeast



600 W. 125th Street cap beam installation

## Need More Information?

For project updates and information, please visit [neighbors.columbia.edu](https://neighbors.columbia.edu). For questions or concerns, e-mail [projx@columbia.edu](mailto:projx@columbia.edu) or call our Services Center at 212-854-2222, 24 hours a day, seven days a week.

## Sustainable Partnerships





# Manhattanville in West Harlem Campus Plan

Construction Activities for the Next Two Weeks

**C**olumbia's long-term plan for the old Manhattanville manufacturing area will revitalize the four former industrial blocks from 125th/129th to 133rd Street between Broadway and 12<sup>th</sup> Avenue, and three small blocks along the east side of Broadway from 131st to 134th Street, into an environmentally sustainable and publicly accessible center for academic and civic life woven into the fabric of the West Harlem community.

## Construction Activities for the Weeks of February 28, 2022 and March 7, 2022

### 600 W. 125th Street

#### *Current Phase of Construction: Excavation and Foundation:*

- Noisy work should be expected during most days during this phase of construction
- Excavation and foundation is anticipated to be complete by the end of the second quarter of 2022

#### *What is Happening During the Next Two Weeks:*

- Overnight utilities work is being performed on W. 125th Street from 10:00 p.m. to 6:00 a.m. This work is anticipated to be complete in mid-March.
- Pile trimming
- Dewatering system setup and dewatering will be forthcoming
- Cap beam installation
- Iron work for new egress stair at 31 Tiemann courtyard

*-Please note that all activities are subject to change based on weather and other field conditions-*

#### *What to Expect*

- Regular working hours are 7:00 a.m. to 6:00 p.m. Monday to Friday, with hours adjusted within that window depending on the construction activity. After-hours work will be performed between 10:00 p.m. to 6:00 a.m., and may occur on weekends from 9:00 a.m. to 5:00 p.m. in accordance with all necessary permits from the New York City Department of Buildings. Note that contractors may mobilize on site approximately 30 to 45 minutes before work commences.
- Although contractors carefully stage construction activities to minimize disruption to the surrounding community, the nature of construction work is such that some disruptions will occur. Expect some noise, vibration, dust, and other related impacts due to construction. Visit [neighbors.columbia.edu/content/600-w-125th-street#/cu\\_accordion\\_item-4958](https://neighbors.columbia.edu/content/600-w-125th-street#/cu_accordion_item-4958) to learn about our comprehensive clean construction program and mitigation protocols.

*(Over)*

## Construction Update

*Weeks of February 28, 2022 and March 7, 2022*

### *What to Expect (continued)*

- The parking lane will be closed on the south side of W. 125th Street from Broadway to St. Clair Place. Parking will not be available on the south side of W. 125th Street from Broadway to the mid-block in front of the entire length of the 600 W. 125th Street construction fence.
- Refer to street signage for the west side of Broadway from 129th to 130th Streets — parking is allowed from 7:00 p.m. to 2:00 a.m., and on weekends

### Construction Progress Photos



600 W. 125th Street, looking northwest



600 W. 125th Street, looking south

### Need More Information?

For project updates and information, please visit [neighbors.columbia.edu](https://neighbors.columbia.edu). For questions or concerns, e-mail [projx@columbia.edu](mailto:projx@columbia.edu) or call our Services Center at 212-854-2222, 24 hours a day, seven days a week.

### Sustainable Partnerships





# Manhattanville in West Harlem Campus Plan

Construction Activities for the Next Two Weeks

**C**olumbia's long-term plan for the old Manhattanville manufacturing area will revitalize the four former industrial blocks from 125th/129th to 133rd Street between Broadway and 12<sup>th</sup> Avenue, and three small blocks along the east side of Broadway from 131st to 134th Street, into an environmentally sustainable and publicly accessible center for academic and civic life woven into the fabric of the West Harlem community.

## Construction Activities for the Weeks of March 7, 2022 and March 14, 2022

### 600 W. 125th Street

#### *Current Phase of Construction: Excavation and Foundation:*

- Noisy work should be expected during most days during this phase of construction
- Excavation and foundation is anticipated to be complete by the end of the second quarter of 2022

#### *What is Happening During the Next Two Weeks:*

- Overnight utilities work is being performed on W. 125th Street from 10:00 p.m. to 6:00 a.m. This work is anticipated to be complete in mid-March.
- Pile trimming
- Dewatering system setup and dewatering will be forthcoming
- Cap beam installation
- Iron work for new egress stair at 31 Tiemann courtyard

*-Please note that all activities are subject to change based on weather and other field conditions-*

#### *What to Expect*

- Regular working hours are 7:00 a.m. to 6:00 p.m. Monday to Friday, with hours adjusted within that window depending on the construction activity. After-hours work will be performed between 10:00 p.m. to 6:00 a.m., and may occur on weekends from 9:00 a.m. to 5:00 p.m. in accordance with all necessary permits from the New York City Department of Buildings. Note that contractors may mobilize on site approximately 30 to 45 minutes before work commences.
- Although contractors carefully stage construction activities to minimize disruption to the surrounding community, the nature of construction work is such that some disruptions will occur. Expect some noise, vibration, dust, and other related impacts due to construction. Visit [neighbors.columbia.edu/content/600-w-125th-street#/cu\\_accordion\\_item-4958](https://neighbors.columbia.edu/content/600-w-125th-street#/cu_accordion_item-4958) to learn about our comprehensive clean construction program and mitigation protocols.

*(Over)*

## Construction Update

***Weeks of March 7, 2022 and March 14, 2022***

### ***What to Expect (continued)***

- The parking lane will be closed on the south side of W. 125th Street from Broadway to St. Clair Place. Parking will not be available on the south side of W. 125th Street from Broadway to the mid-block in front of the entire length of the 600 W. 125th Street construction fence.
- Refer to street signage for the west side of Broadway from 129th to 130th Streets — parking is allowed from 7:00 p.m. to 2:00 a.m., and on weekends

### **Construction Progress Photos**



600 W. 125th Street, looking northwest



Capbeam installation at 600 W. 125th Street

### **Need More Information?**

For project updates and information, please visit [neighbors.columbia.edu](https://neighbors.columbia.edu). For questions or concerns, e-mail [projx@columbia.edu](mailto:projx@columbia.edu) or call our Services Center at 212-854-2222, 24 hours a day, seven days a week.

### **Sustainable Partnerships**





# Manhattanville in West Harlem Campus Plan

Construction Activities for the Next Two Weeks

**C**olumbia's long-term plan for the old Manhattanville manufacturing area will revitalize the four former industrial blocks from 125th/129th to 133rd Street between Broadway and 12<sup>th</sup> Avenue, and three small blocks along the east side of Broadway from 131st to 134th Street, into an environmentally sustainable and publicly accessible center for academic and civic life woven into the fabric of the West Harlem community.

## Construction Activities for the Weeks of March 14, 2022 and March 21, 2022

### 600 W. 125th Street

#### *Current Phase of Construction: Excavation and Foundation:*

- Noisy work should be expected during most days during this phase of construction
- Excavation and foundation is anticipated to be complete by the end of the second quarter of 2022

#### *What is Happening During the Next Two Weeks:*

- Overnight utilities work will begin on W. 125th Street on Thursday, March 10 from 10:00 p.m. to 6:00 a.m. This work is anticipated to be complete at the end of March.
- Pile trimming
- Dewatering system setup and dewatering will be forthcoming
- Cap beam installation
- Tentative mobilization for Tangent Pile operation at ejector pits

*-Please note that all activities are subject to change based on weather and other field conditions-*

#### *What to Expect*

- Regular working hours are 7:00 a.m. to 6:00 p.m. Monday to Friday, with hours adjusted within that window depending on the construction activity. After-hours work will be performed between 10:00 p.m. to 6:00 a.m., and may occur on weekends from 9:00 a.m. to 5:00 p.m. in accordance with all necessary permits from the New York City Department of Buildings. Note that contractors may mobilize on site approximately 30 to 45 minutes before work commences.
- Although contractors carefully stage construction activities to minimize disruption to the surrounding community, the nature of construction work is such that some disruptions will occur. Expect some noise, vibration, dust, and other related impacts due to construction. Visit [neighbors.columbia.edu/content/600-w-125th-street#/cu\\_accordion\\_item-4958](https://neighbors.columbia.edu/content/600-w-125th-street#/cu_accordion_item-4958) to learn about our comprehensive clean construction program and mitigation protocols.

*(Over)*

## Construction Update

*Weeks of March 14, 2022 and March 21, 2022*

### *What to Expect (continued)*

- The parking lane will be closed on the south side of W. 125th Street from Broadway to St. Clair Place. Parking will not be available on the south side of W. 125th Street from Broadway to the mid-block in front of the entire length of the 600 W. 125th Street construction fence.
- Refer to street signage for the west side of Broadway from 129th to 130th Streets — parking is allowed from 7:00 p.m. to 2:00 a.m., and on weekends

### Construction Progress Photos



600 W. 125th Street, looking northwest



Capbeam installation at 600 W. 125th Street

### Need More Information?

For project updates and information, please visit [neighbors.columbia.edu](https://neighbors.columbia.edu). For questions or concerns, e-mail [projx@columbia.edu](mailto:projx@columbia.edu) or call our Services Center at 212-854-2222, 24 hours a day, seven days a week.

### Sustainable Partnerships





# Manhattanville in West Harlem Campus Plan

Construction Activities for the Next Two Weeks

**C**olumbia's long-term plan for the old Manhattanville manufacturing area will revitalize the four former industrial blocks from 125th/129th to 133rd Street between Broadway and 12<sup>th</sup> Avenue, and three small blocks along the east side of Broadway from 131st to 134th Street, into an environmentally sustainable and publicly accessible center for academic and civic life woven into the fabric of the West Harlem community.

## Construction Activities for the Weeks of March 21, 2022 and March 28, 2022

### 600 W. 125th Street

#### *Current Phase of Construction: Excavation and Foundation:*

- Noisy work should be expected during most days during this phase of construction
- Excavation and foundation is anticipated to be complete by the end of the second quarter of 2022

#### *What is Happening During the Next Two Weeks:*

- Utility work on 125th Street on hold pending special variance request to receive a street permit to perform the work during the day. When the work resumes, it will involve the contractor saw cutting and breaking up the roadway to install the new building utility connections (for future water and sanitary) by using jackhammers, road saw, and backhoe and a dump truck will be used to remove material.
- Installation of in-ground columns to form cutoff walls from the in-ground water to install the north ejector pit. Drill rigs, a backhoe, and a mini-bulldozer will be used to perform this work.
- An excavator will be used to complete general site grading and clean up

*-Please note that all activities are subject to change based on weather and other field conditions-*

#### *What to Expect*

- Regular working hours are 7:00 a.m. to 6:00 p.m. Monday to Friday, with hours adjusted within that window depending on the construction activity. Some work may be performed on weekends from 9:00 a.m. to 5:00 p.m. in accordance with all necessary permits from the New York City Department of Buildings. Note that contractors may mobilize on site approximately 30 to 45 minutes before work commences.
- Although contractors carefully stage construction activities to minimize disruption to the surrounding community, the nature of construction work is such that some disruptions will occur. Expect some noise, vibration, dust, and other related impacts due to construction. Visit [neighbors.columbia.edu/content/600-w-125th-street#/cu\\_accordion\\_item-4958](https://neighbors.columbia.edu/content/600-w-125th-street#/cu_accordion_item-4958) to learn about our comprehensive clean construction program and mitigation protocols.

*(Over)*

## Construction Update

Weeks of March 21, 2022 and March 28, 2022

### *What to Expect (continued)*

- The parking lane will be closed on the south side of W. 125th Street from Broadway to St. Clair Place. Parking will not be available on the south side of W. 125th Street from Broadway to the mid-block in front of the entire length of the 600 W. 125th Street construction fence.
- Refer to street signage for the west side of Broadway from 129th to 130th Streets — parking is allowed from 7:00 p.m. to 2:00 a.m., and on weekends

### Construction Progress Photos



600 W. 125th Street, looking west



Capbeam installation at 600 W. 125th Street

### Need More Information?

For project updates and information, please visit [neighbors.columbia.edu](https://neighbors.columbia.edu). For questions or concerns, e-mail [projx@columbia.edu](mailto:projx@columbia.edu) or call our Services Center at 212-854-2222, 24 hours a day, seven days a week.

### Sustainable Partnerships





# Manhattanville in West Harlem Campus Plan

Construction Activities for the Next Two Weeks

**C**olumbia's long-term plan for the old Manhattanville manufacturing area will revitalize the four former industrial blocks from 125th/129th to 133rd Street between Broadway and 12th Avenue, and three small blocks along the east side of Broadway from 131st to 134th Street, into an environmentally sustainable and publicly accessible center for academic and civic life woven into the fabric of the West Harlem community.

## Construction Activities for the Weeks of March 28, 2022 and April 4, 2022

### 600 W. 125th Street

#### *Current Phase of Construction: Excavation and Foundation:*

- Noisy work should be expected during most days during this phase of construction
- Excavation and foundation is anticipated to be complete by the end of the second quarter of 2022

#### *What is Happening During the Next Two Weeks:*

- Utility work on 125th Street on hold pending special variance request to receive a street permit to perform the work during the day. When the work resumes, it will involve the contractor saw cutting and breaking up the street to install the new building utility connections (for future water and sanitary) by using jackhammers, road saw, and backhoe and a dump truck will be used to remove material.
- Installation of in-ground columns to form cutoff walls from the in-ground water to facilitate the installation of the north ejector pit. Drill rigs, a backhoe, and a mini-bulldozer will be used to perform this work.
- The steel horizontal corner bracing at the north side of site will be lifted and welded into place using machinery on site
- Excavator will be used to complete general site grading and clean up

*-Please note that all activities are subject to change based on weather and other field conditions-*

#### *What to Expect*

- Regular working hours are 7:00 a.m. to 6:00 p.m. Monday to Friday, with hours adjusted within that window depending on the construction activity. After-hours work will be performed between 10:00 p.m. to 6:00 a.m., and may occur on weekends from 9:00 a.m. to 5:00 p.m. in accordance with all necessary permits from the New York City Department of Buildings. Note that contractors may mobilize on site approximately 30 to 45 minutes before work commences.
- Although contractors carefully stage construction activities to minimize disruption to the surrounding community, the nature of construction work is such that some disruptions will occur. Expect some noise, vibration, dust, and other related impacts due to construction. Visit [neighbors.columbia.edu/content/600-w-125th-street#/cu\\_accordion\\_item-4958](https://neighbors.columbia.edu/content/600-w-125th-street#/cu_accordion_item-4958) to learn about our comprehensive clean construction program and mitigation protocols.

### *What to Expect (continued)*

- The parking lane will be closed on the south side of W. 125th Street from Broadway to St. Clair Place. Parking will not be available on the south side of W. 125th Street from Broadway to the mid-block in front of the entire length of the 600 W. 125th Street construction fence.
- Refer to street signage for the west side of Broadway from 129th to 130th Streets — parking is allowed from 7:00 p.m. to 2:00 a.m., and on weekends

### Construction Progress Photos



600 W. 125th Street, looking north



600 W. 125th Street, looking south

### Need More Information?

For project updates and information, please visit [neighbors.columbia.edu](https://neighbors.columbia.edu). For questions or concerns, e-mail [projx@columbia.edu](mailto:projx@columbia.edu) or call our Services Center at 212-854-2222, 24 hours a day, seven days a week.

### Sustainable Partnerships





# Manhattanville in West Harlem Campus Plan

Construction Activities for the Next Two Weeks

**C**olumbia's long-term plan for the old Manhattanville manufacturing area will revitalize the four former industrial blocks from 125th/129th to 133rd Street between Broadway and 12th Avenue, and three small blocks along the east side of Broadway from 131st to 134th Street, into an environmentally sustainable and publicly accessible center for academic and civic life woven into the fabric of the West Harlem community.

## Construction Activities for the Weeks of April 4, 2022 and April 11, 2022

### 600 W. 125th Street

#### ***Current Phase of Construction: Excavation and Foundation:***

- Noisy work should be expected during most days during this phase of construction
- Excavation and foundation is anticipated to be complete by the end of the second quarter of 2022

#### ***What is Happening During the Next Two Weeks:***

- Utility work on 125th Street on hold pending special variance request to receive a street permit to perform the work during the day. When the work resumes, it will involve the contractor saw cutting and breaking up the street to install the new building utility connections (for future water and sanitary) by using jackhammers, road saw, and backhoe and a dump truck will be used to remove material.
- Installation of in-ground columns to form cutoff walls from the in-ground water to facilitate the installation of the north ejector pit. Drill rigs, a backhoe, and a mini-bulldozer will be used to perform this work.
- The steel horizontal corner bracing at the north side of site will be lifted and welded into place using machinery on site. Timber lagging will be installed on north side of the site as well.
- Excavator will be used to complete general site grading and clean up

### Studebaker Building Façade Repairs and Roof Replacement

#### ***What is Happening***

- The first phase of exterior repairs at the Studebaker Building is commencing, focusing on façade repairs to address deteriorating conditions of terra cotta and ensure safety.
- Demolition of east elevation parapet wall is tentatively scheduled to begin the week of April 4, pending the approval of all required permits. Demolition is anticipated to continue through at least the week of April 11.
- Investigative probing and façade inspection is to take place to determine the full scope of façade repairs needed, and will be focused on the south parapet wall

*-Please note that all activities are subject to change based on weather and other field conditions-*

## What to Expect

- Regular working hours are 7:00 a.m. to 6:00 p.m. Monday to Friday, with hours adjusted within that window depending on the construction activity. After-hours work will be performed between 10:00 p.m. to 6:00 a.m., and may occur on weekends from 9:00 a.m. to 5:00 p.m. in accordance with all necessary permits from the New York City Department of Buildings. Note that contractors may mobilize on site approximately 30 to 45 minutes before work commences.
- Although contractors carefully stage construction activities to minimize disruption to the surrounding community, the nature of construction work is such that some disruptions will occur. Expect some noise, vibration, dust, and other related impacts due to construction. Visit [neighbors.columbia.edu/content/600-w-125th-street#/cu\\_accordion\\_item-4958](https://neighbors.columbia.edu/content/600-w-125th-street#/cu_accordion_item-4958) to learn about our comprehensive clean construction program and mitigation protocols.
- The parking lane will be closed on the south side of W. 125th Street from Broadway to St. Clair Place. Parking will not be available on the south side of W. 125th Street from Broadway to the mid-block in front of the entire length of the 600 W. 125th Street construction fence.
- Refer to street signage for the west side of Broadway from 129th to 130th Streets — parking is allowed from 7:00 p.m. to 2:00 a.m., and on weekends

## Construction Progress Photos



600 W. 125th Street, looking west



Corner bracing performed at 600 W. 125th Street

## Need More Information?

For project updates and information, please visit [neighbors.columbia.edu](https://neighbors.columbia.edu). For questions or concerns, e-mail [projx@columbia.edu](mailto:projx@columbia.edu) or call our Services Center at 212-854-2222, 24 hours a day, seven days a week.

## Sustainable Partnerships





# Manhattanville in West Harlem Campus Plan

Construction Activities for the Next Two Weeks

**C**olumbia's long-term plan for the old Manhattanville manufacturing area will revitalize the four former industrial blocks from 125th/129th to 133rd Street between Broadway and 12th Avenue, and three small blocks along the east side of Broadway from 131st to 134th Street, into an environmentally sustainable and publicly accessible center for academic and civic life woven into the fabric of the West Harlem community.

## Construction Activities for the Weeks of April 11, 2022 and April 18, 2022

### 600 W. 125th Street

#### ***Current Phase of Construction: Excavation and Foundation:***

- Noisy work should be expected during most days during this phase of construction
- Excavation and foundation is anticipated to be complete by the end of the second quarter of 2022

#### ***What is Happening During the Next Two Weeks:***

- Utility work on 125th Street on hold pending special variance request to receive a street permit to perform the work during the day. When the work resumes, it will involve the contractor saw cutting and breaking up the street to install the new building utility connections (for future water and sanitary) by using jackhammers, road saw, and backhoe and a dump truck will be used to remove material.
- Installation of in-ground columns to form cutoff walls from the in-ground water to facilitate the installation of the north ejector pit. Drill rigs, a backhoe, and a mini-bulldozer will be used to perform this work.
- The steel bracing at the north side of site will be lifted and welded into place using machinery on site. Timber lagging will be installed on north side of the site
- Excavator will be used to complete general site grading, berm removal, and clean up

### Studebaker Building Façade Repairs and Roof Replacement

#### ***What is Happening***

- The first phase of exterior repairs at the Studebaker Building is commencing, focusing on façade repairs to address deteriorating conditions of terra cotta and ensure safety.
- Demolition of east elevation parapet wall is anticipated to continue through at least the week of April 11.
- Investigative probing and façade inspection is to take place to determine the full scope of façade repairs needed, and will be focused on the south parapet wall

*-Please note that all activities are subject to change based on weather and other field conditions-*

## What to Expect

- Regular working hours are 7:00 a.m. to 6:00 p.m. Monday to Friday, with hours adjusted within that window depending on the construction activity. Some work may be performed on weekends from 9:00 a.m. to 5:00 p.m. and after hours in accordance with all necessary permits from the New York City Department of Buildings. Note that contractors may mobilize on site approximately 30 to 45 minutes before work commences.
- Although contractors carefully stage construction activities to minimize disruption to the surrounding community, the nature of construction work is such that some disruptions will occur. Expect some noise, vibration, dust, and other related impacts due to construction. Visit [neighbors.columbia.edu/content/600-w-125th-street#/cu\\_accordion\\_item-4958](https://neighbors.columbia.edu/content/600-w-125th-street#/cu_accordion_item-4958) to learn about our comprehensive clean construction program and mitigation protocols.
- The parking lane will be closed on the south side of W. 125th Street from Broadway to St. Clair Place. Parking will not be available on the south side of W. 125th Street from Broadway to the mid-block in front of the entire length of the 600 W. 125th Street construction fence.
- Refer to street signage for the west side of Broadway from 129th to 130th Streets — parking is allowed from 7:00 p.m. to 2:00 a.m., and on weekends

## Construction Progress Photos



600 W. 125th Street, looking west



Tangent pile drilling

## Need More Information?

For project updates and information, please visit [neighbors.columbia.edu](https://neighbors.columbia.edu). For questions or concerns, e-mail [projx@columbia.edu](mailto:projx@columbia.edu) or call our Services Center at 212-854-2222, 24 hours a day, seven days a week.

## Sustainable Partnerships





# Manhattanville in West Harlem Campus Plan

Construction Activities for the Next Two Weeks

**C**olumbia's long-term plan for the old Manhattanville manufacturing area will revitalize the four former industrial blocks from 125th/129th to 133rd Street between Broadway and 12th Avenue, and three small blocks along the east side of Broadway from 131st to 134th Street, into an environmentally sustainable and publicly accessible center for academic and civic life woven into the fabric of the West Harlem community.

## Construction Activities for the Weeks of April 18, 2022 and April 25, 2022

### 600 W. 125th Street

#### *Current Phase of Construction: Excavation and Foundation:*

- Noisy work should be expected during most days during this phase of construction
- Excavation and foundation is anticipated to be complete by the end of the second quarter of 2022

#### *What is Happening During the Next Two Weeks:*

- Utility work on 125th Street will resume the week of April 18. The NYC Department of Transportation has granted a street permit for work to be performed Monday through Friday between 9:00 a.m. to 4:00 p.m., and on Saturdays from 8:00 a.m. to 4:00 p.m. Work will involve the contractor saw cutting and breaking up the street to install the new building utility connections (for future water and sanitary) by using jackhammers, road saw, and backhoe. A dump truck will be used to remove material.
- Installation of in-ground columns to form cutoff walls from the in-ground water to facilitate the installation of the north ejector pit. Drill rigs, a backhoe, and a mini-bulldozer will be used to perform this work.
- Timber lagging will be installed on north side of the site
- Excavator will be used to complete general site grading, berm removal, and clean up

### Studebaker Building Façade Repairs and Roof Replacement

#### *What is Happening*

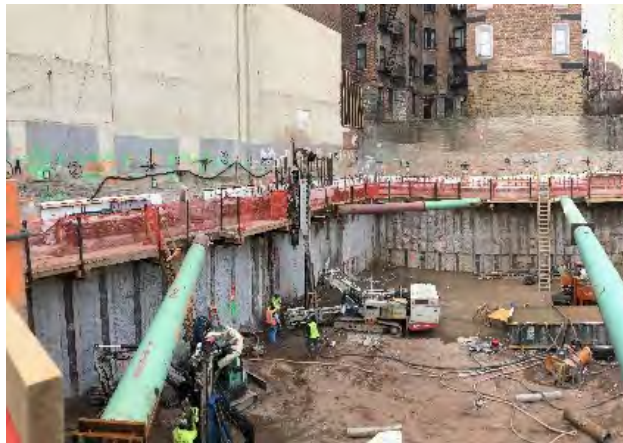
- Demolition of the east elevation parapet wall will continue through the week of April 25
- Partial demolition of the south parapet pier (east end of the parapet) for investigative purposes will be scheduled for April 19 and 20
- Terra cotta repair mock-ups will be installed on the south elevation parapet on April 20 through April 22
- Demolition of the south elevation parapet piers will begin April 25 and is anticipated to continue through the week of May 6. Demolition will start on the east end and move westward.

*-Please note that all activities are subject to change based on weather and other field conditions-*

## What to Expect

- Regular working hours are 7:00 a.m. to 6:00 p.m. Monday to Friday, with hours adjusted within that window depending on the construction activity. Some work may be performed on weekends from 8:00 a.m. to 5:00 p.m. and after hours in accordance with all necessary permits. Note that contractors may mobilize on site approximately 30 to 45 minutes before work commences.
- Although contractors carefully stage construction activities to minimize disruption to the surrounding community, the nature of construction work is such that some disruptions will occur. Expect some noise, vibration, dust, and other related impacts due to construction. Visit [neighbors.columbia.edu/content/600-w-125th-street#/cu\\_accordion\\_item-4958](https://neighbors.columbia.edu/content/600-w-125th-street#/cu_accordion_item-4958) to learn about our comprehensive clean construction program and mitigation protocols.
- The parking lane will be closed on the south side of W. 125th Street from Broadway to St. Clair Place. Parking will not be available on the south side of W. 125th Street from Broadway to the mid-block in front of the entire length of the 600 W. 125th Street construction fence.
- Refer to street signage for the west side of Broadway from 129th to 130th Streets — parking is allowed from 7:00 p.m. to 2:00 a.m., and on weekends

## Construction Progress Photos



600 W. 125th Street, looking west



Tangent pile drilling

## Need More Information?

For project updates and information, please visit [neighbors.columbia.edu](https://neighbors.columbia.edu). For questions or concerns, e-mail [projx@columbia.edu](mailto:projx@columbia.edu) or call our Services Center at 212-854-2222, 24 hours a day, seven days a week.

## Sustainable Partnerships





# Manhattanville in West Harlem Campus Plan

Construction Activities for the Next Two Weeks

**C**olumbia's long-term plan for the old Manhattanville manufacturing area will revitalize the four former industrial blocks from 125th/129th to 133rd Street between Broadway and 12th Avenue, and three small blocks along the east side of Broadway from 131st to 134th Street, into an environmentally sustainable and publicly accessible center for academic and civic life woven into the fabric of the West Harlem community.

## Construction Activities for the Weeks of April 25, 2022 and May 2, 2022

### 600 W. 125th Street

#### *Current Phase of Construction: Excavation and Foundation:*

- Noisy work should be expected during most days during this phase of construction
- Excavation and foundation is anticipated to be complete by the end of the second quarter of 2022

#### *What is Happening During the Next Two Weeks:*

- Utility work on 125th Street has resumed. The NYC Department of Transportation has granted a street permit for work to be performed Monday through Friday between 9:00 a.m. to 4:00 p.m., and on Saturdays from 8:00 a.m. to 4:00 p.m. Work will involve the contractor saw cutting and breaking up the street to install the new building utility connections (for future water and sanitary) by using jackhammers, road saw, and backhoe. A dump truck will be used to remove material. Utility work on Broadway will follow the completion of the work on 125th Street.
- Installation of in-ground columns to form cutoff walls from the in-ground water to facilitate the installation of the north ejector pit and elevator pit. Drill rigs, a backhoe, and a mini-bulldozer will be used to perform this work.
- Installation of soil plugs which includes drilling of metal sleeves and injecting concrete
- Concrete trucks will be used to install the east injector pit. Timber lagging and steel support for the support of excavation will be installed on north side of the site.
- Excavator will be used to complete berm removal, site grading and clean up

### Studebaker Building Façade Repairs and Roof Replacement

#### *What is Happening*

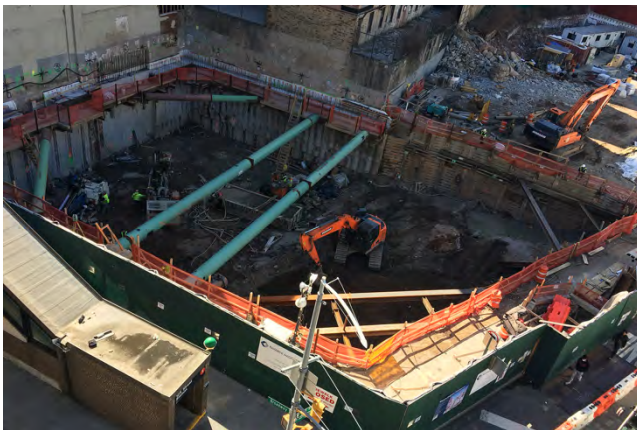
- Demolition of the east elevation parapet wall will continue through the week of April 25
- Demolition of the south elevation parapet piers will begin April 25 and is anticipated to continue through the week of May 6. Demolition will start on the east end and move westward.

*-Please note that all activities are subject to change based on weather and other field conditions-*

## What to Expect

- Regular working hours are 7:00 a.m. to 6:00 p.m. Monday to Friday, with hours adjusted within that window depending on the construction activity. Some work may be performed on weekends from 8:00 a.m. to 5:00 p.m. and after hours in accordance with all necessary permits. Note that contractors may mobilize on site approximately 30 to 45 minutes before work commences.
- Although contractors carefully stage construction activities to minimize disruption to the surrounding community, the nature of construction work is such that some disruptions will occur. Expect some noise, vibration, dust, and other related impacts due to construction. Visit [neighbors.columbia.edu/content/600-w-125th-street#/cu\\_accordion\\_item-4958](https://neighbors.columbia.edu/content/600-w-125th-street#/cu_accordion_item-4958) to learn about our comprehensive clean construction program and mitigation protocols.
- The parking lane will be closed on the south side of W. 125th Street from Broadway to St. Clair Place. Parking will not be available on the south side of W. 125th Street from Broadway to the mid-block in front of the entire length of the 600 W. 125th Street construction fence.
- Refer to street signage for the west side of Broadway from 129th to 130th Streets — parking is allowed from 7:00 p.m. to 2:00 a.m., and on weekends

## Construction Progress Photos



600 W. 125th Street, looking west



Tangent pile drilling

## Need More Information?

For project updates and information, please visit [neighbors.columbia.edu](https://neighbors.columbia.edu). For questions or concerns, e-mail [projx@columbia.edu](mailto:projx@columbia.edu) or call our Services Center at 212-854-2222, 24 hours a day, seven days a week.

## Sustainable Partnerships





# Manhattanville in West Harlem Campus Plan

Construction Activities for the Next Two Weeks

**C**olumbia's long-term plan for the old Manhattanville manufacturing area will revitalize the four former industrial blocks from 125th/129th to 133rd Street between Broadway and 12th Avenue, and three small blocks along the east side of Broadway from 131st to 134th Street, into an environmentally sustainable and publicly accessible center for academic and civic life woven into the fabric of the West Harlem community.

## Construction Activities for the Weeks of May 2, 2022 and May 9, 2022

### 600 W. 125th Street

#### *Current Phase of Construction: Excavation and Foundation:*

- Noisy work should be expected during most days during this phase of construction
- Excavation and foundation is anticipated to be complete by the end of the second quarter of 2022

#### *What is Happening During the Next Two Weeks:*

- Utility work on 125th Street has resumed. Work will involve the contractor saw cutting and breaking up the street to install the new building utility connections (for future water and sanitary) by using jackhammers, road saw, and backhoe. A dump truck will be used to remove material. Utility work on Broadway will follow the completion of the work on 125th Street.
- Installation of in-ground columns to form cutoff walls from the in-ground water to facilitate the installation of the north ejector pit and elevator pit. Drill rigs, a backhoe, and a mini-bulldozer will be used to perform this work.
- Drill rig will be used to install rigid inclusions
- Installation of soil plugs which includes the drilling of metal sleeves and injecting concrete
- Concrete trucks will be used to install the east injector pit. Timber lagging and steel support for the support of excavation will be installed on north side of the site.
- Excavator will be used to complete berm removal, site grading and clean up

### Studebaker Building Façade Repairs and Roof Replacement

#### *What is Happening*

- Demolition of the east parapet wall is complete. Installation of flashing and reconstruction will begin.
- Removal of spalled concrete stucco at the east elevation will begin the week of May 2 and will continue for the next 3-4 weeks.
- Demolition of the south elevation parapet piers and inboard facing wythe of brick will continue

## Site 4 (project site at 125th Street and 12th Avenue)

### *What is Happening*

- Geothermal drilling and testing is occurring through mid-May
- The use of a drilling rig will continue through approximately May 3, at which time flow and temperature testing will commence

*-Please note that all activities are subject to change based on weather and other field conditions-*

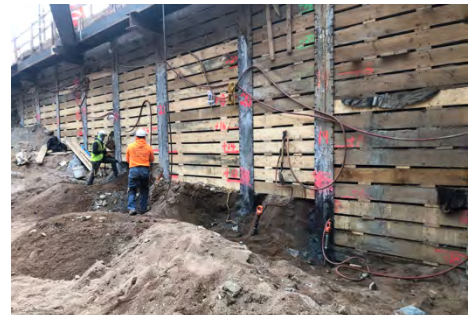
### What to Expect

- Regular working hours are 7:00 a.m. to 6:00 p.m. Monday to Friday, with hours adjusted within that window depending on the construction activity. Some work may be performed on weekends from 8:00 a.m. to 5:00 p.m. and after hours in accordance with all necessary permits. Note that contractors may mobilize on site approximately 30 to 45 minutes before work commences.
- Although contractors carefully stage construction activities to minimize disruption to the surrounding community, the nature of construction work is such that some disruptions will occur. Expect some noise, vibration, dust, and other related impacts due to construction. Visit [neighbors.columbia.edu/content/600-w-125th-street#/cu\\_accordion\\_item-4958](https://neighbors.columbia.edu/content/600-w-125th-street#/cu_accordion_item-4958) to learn about our comprehensive clean construction program and mitigation protocols.
- The parking lane will be closed on the south side of W. 125th Street from Broadway to St. Clair Place. Parking will not be available on the south side of W. 125th Street from Broadway to the mid-block in front of the entire length of the 600 W. 125th Street construction fence.
- Refer to street signage for the west side of Broadway from 129th to 130th Streets — parking is allowed from 7:00 p.m. to 2:00 a.m., and on weekends

### Construction Progress Photos



600 W. 125th Street, looking west



Timber lagging at 600 W. 125th Street

### Need More Information?

For project updates and information, please visit [neighbors.columbia.edu](https://neighbors.columbia.edu). For questions or concerns, e-mail [projx@columbia.edu](mailto:projx@columbia.edu) or call our Services Center at 212-854-2222, 24 hours a day, seven days a week.

### Sustainable Partnerships





# Manhattanville in West Harlem Campus Plan

Construction Activities for the Next Two Weeks

**C**olumbia's long-term plan for the old Manhattanville manufacturing area will revitalize the four former industrial blocks from 125th/129th to 133rd Street between Broadway and 12th Avenue, and three small blocks along the east side of Broadway from 131st to 134th Street, into an environmentally sustainable and publicly accessible center for academic and civic life woven into the fabric of the West Harlem community.

## Construction Activities for the Weeks of May 9, 2022 and May 16, 2022

### 600 W. 125th Street

#### *Current Phase of Construction: Excavation and Foundation:*

- Noisy work should be expected during most days during this phase of construction
- Excavation and foundation is anticipated to be complete by the end of the second quarter of 2022

#### *What is Happening During the Next Two Weeks:*

- Utility work on 125th Street has resumed. Work will involve the contractor saw cutting and breaking up the street to install the new building utility connections (for future water and sanitary) by using jackhammers, road saw, and backhoe. A dump truck will be used to remove material. Utility work on Broadway will follow the completion of the work on 125th Street.
- Installation of in-ground columns to form cutoff walls from the in-ground water to facilitate the installation of the north ejector pit and elevator pit. Drill rigs, a backhoe, and a mini-bulldozer will be used to perform this work.
- Drill rig will be used to install rigid inclusions
- Installation of soil plugs which includes the drilling of metal sleeves and injecting concrete
- Concrete trucks will be used to install the east injector pit. Timber lagging and steel support for the support of excavation will be installed on north side of the site.
- Excavator will be used to complete site grading and clean up

### Studebaker Building Façade Repairs and Roof Replacement

#### *What is Happening*

- Demolition of the east parapet wall is complete. Installation of flashing and reconstruction.
- Removal of spalled concrete stucco at the east elevation is ongoing
- Demolition of the south elevation parapet piers and inboard facing wythe of brick is ongoing

## Site 4 (project site at 125th Street and 12th Avenue)

### *What is Happening*

- Geothermal drilling and testing are occurring through mid-May
- Drilling is complete. Flow and temperature testing are expected to commence the week of May 9.

*-Please note that all activities are subject to change based on weather and other field conditions-*

### What to Expect

- Regular working hours are 7:00 a.m. to 6:00 p.m. Monday to Friday, with hours adjusted within that window depending on the construction activity. Some work may be performed on weekends from 8:00 a.m. to 5:00 p.m. and after hours in accordance with all necessary permits. Note that contractors may mobilize on site approximately 30 to 45 minutes before work commences.
- Although contractors carefully stage construction activities to minimize disruption to the surrounding community, the nature of construction work is such that some disruptions will occur. Expect some noise, vibration, dust, and other related impacts due to construction. Visit [neighbors.columbia.edu/content/600-w-125th-street#/cu\\_accordion\\_item-4958](https://neighbors.columbia.edu/content/600-w-125th-street#/cu_accordion_item-4958) to learn about our comprehensive clean construction program and mitigation protocols.
- The parking lane will be closed on the south side of W. 125th Street from Broadway to St. Clair Place. Parking will not be available on the south side of W. 125th Street from Broadway to the mid-block in front of the entire length of the 600 W. 125th Street construction fence.
- Refer to street signage for the west side of Broadway from 129th to 130th Streets — parking is allowed from 7:00 p.m. to 2:00 a.m., and on weekends

### Construction Progress Photos



600 W. 125th Street, looking west



Timber lagging at 600 W. 125th Street

### Need More Information?

For project updates and information, please visit [neighbors.columbia.edu](https://neighbors.columbia.edu). For questions or concerns, e-mail [projx@columbia.edu](mailto:projx@columbia.edu) or call our Services Center at 212-854-2222, 24 hours a day, seven days a week.

### Sustainable Partnerships





# Manhattanville in West Harlem Campus Plan

Construction Activities for the Next Two Weeks

**C**olumbia's long-term plan for the old Manhattanville manufacturing area will revitalize the four former industrial blocks from 125th/129th to 133rd Street between Broadway and 12th Avenue, and three small blocks along the east side of Broadway from 131st to 134th Street, into an environmentally sustainable and publicly accessible center for academic and civic life woven into the fabric of the West Harlem community.

## Construction Activities for the Weeks of May 16, 2022 and May 23, 2022

### 600 W. 125th Street

#### ***Current Phase of Construction: Excavation and Foundation:***

- Noisy work should be expected during most days during this phase of construction
- Excavation and foundation is anticipated to be complete by the end of the third quarter of 2022

#### ***What is Happening During the Next Two Weeks:***

- Utility work on 125th Street has resumed. Work will involve the contractor saw cutting and breaking up the street to install the new building utility connections (for future water and sanitary) by using jackhammers, road saw, and backhoe. A dump truck will be used to remove material. Utility work on Broadway will follow the completion of the work on 125th Street.
- Installation of in-ground columns to form cutoff walls from the in-ground water to facilitate the installation of the north ejector pit and elevator pit. Drill rigs, a backhoe, and a mini-bulldozer will be used to perform this work.
- Drill rig will be used to install rigid inclusions
- Installation of soil plugs which includes the drilling of metal sleeves and injecting concrete
- Concrete trucks will be used to install the east injector pit. Timber lagging and steel support for the support of excavation will be installed on north side of the site.
- Underground utility installation for the building will begin
- Excavator will be used to complete site grading and clean up

### Studebaker Building Façade Repairs and Roof Replacement

#### ***What is Happening***

- Removal of the spalled concrete wall at the east elevation will continue for the next 2-3 weeks, weather permitting. For the first 5-7 days, this work will be limited to the northern half of the east elevation starting at the 5th floor down to the ground level. Once this side is complete, work will commence at the southern half of the east elevation starting from the 6th floor down to the ground level. Removal of spalled concrete requires chipping and some jackhammering, and it will take approximately 1-2 days per floor.
- Reconstruction of the east parapet wall will continue through the weeks of May 16 and 23. This is mostly quiet work.
- Rebricking of inboard facing wythe of brick at the south parapet wall will continue through the weeks of May 16 and 23. This is mostly quiet work.

## Site 4 (project site at 125th Street and 12th Avenue)

### *What is Happening*

- Geothermal drilling and testing are occurring through mid-May
- Flow and temperature testing has commenced

*-Please note that all activities are subject to change based on weather and other field conditions-*

### What to Expect

- Regular working hours are 7:00 a.m. to 6:00 p.m. Monday to Friday, with hours adjusted within that window depending on the construction activity. Some work may be performed on weekends from 8:00 a.m. to 5:00 p.m. and after hours in accordance with all necessary permits. Note that contractors may mobilize on site approximately 30 to 45 minutes before work commences.
- Although contractors carefully stage construction activities to minimize disruption to the surrounding community, the nature of construction work is such that some disruptions will occur. Expect some noise, vibration, dust, and other related impacts due to construction. Visit [neighbors.columbia.edu/content/600-w-125th-street#/cu\\_accordion\\_item-4958](https://neighbors.columbia.edu/content/600-w-125th-street#/cu_accordion_item-4958) to learn about our comprehensive clean construction program and mitigation protocols.
- The parking lane will be closed on the south side of W. 125th Street from Broadway to St. Clair Place. Parking will not be available on the south side of W. 125th Street from Broadway to the mid-block in front of the entire length of the 600 W. 125th Street construction fence.
- Refer to street signage for the west side of Broadway from 129th to 130th Streets — parking is allowed from 7:00 p.m. to 2:00 a.m., and on weekends

### Construction Progress Photos



600 W. 125th Street, looking west



600 W. 125th Street, looking south

### Need More Information?

For project updates and information, please visit [neighbors.columbia.edu](https://neighbors.columbia.edu). For questions or concerns, e-mail [projx@columbia.edu](mailto:projx@columbia.edu) or call our Services Center at 212-854-2222, 24 hours a day, seven days a week.

### Sustainable Partnerships





# Manhattanville in West Harlem Campus Plan

Construction Activities for the Next Two Weeks

**C**olumbia's long-term plan for the old Manhattanville manufacturing area will revitalize the four former industrial blocks from 125th/129th to 133rd Street between Broadway and 12th Avenue, and three small blocks along the east side of Broadway from 131st to 134th Street, into an environmentally sustainable and publicly accessible center for academic and civic life woven into the fabric of the West Harlem community.

## Construction Activities for the Weeks of May 23, 2022 and May 30, 2022

### 600 W. 125th Street

#### *Current Phase of Construction: Excavation and Foundation:*

- Noisy work should be expected during most days during this phase of construction
- Excavation and foundation is anticipated to be complete by the end of the third quarter of 2022

#### *What is Happening During the Next Two Weeks:*

- Utility work on 125th Street is almost complete and will be backfilled. Once complete, utility work will begin on Broadway. Work will involve the contractor saw cutting and breaking up the street to install the new building utility connections (for future water and sanitary) by using jackhammers, road saw, and backhoe. A dump truck will be used to remove material.
- Installation of soil plugs which includes the drilling of metal sleeves and injecting concrete
- Concrete trucks will be used to install the ejector pits and elevator pit
- Underground utility installation for the building has commenced
- Excavator will be used to complete site grading and clean up

### Studebaker Building Façade Repairs and Roof Replacement

#### *What is Happening*

- Removal of the spalled concrete wall at the east elevation will continue for the next 2-3 weeks, weather permitting. Work will take place at the southern half of the east elevation starting from the 6th floor down to the ground level. Removal of spalled concrete requires chipping and some jackhammering, and it will take approximately 1-2 days per floor.
- Reconstruction of the east parapet wall is continuing. This is mostly quiet work.
- Rebrick of inboard facing wythe of brick at the south parapet wall is continuing. This is mostly quiet work.

## Site 4 (project site at 125th Street and 12th Avenue)

### *What is Happening*

- Geothermal drilling and testing are occurring through June
- Flow and temperature testing is ongoing

*-Please note that all activities are subject to change based on weather and other field conditions-*

### What to Expect

- Regular working hours are 7:00 a.m. to 6:00 p.m. Monday to Friday, with hours adjusted within that window depending on the construction activity. Some work may be performed on weekends from 8:00 a.m. to 5:00 p.m. and after hours in accordance with all necessary permits. Note that contractors may mobilize on site approximately 30 to 45 minutes before work commences.
- Although contractors carefully stage construction activities to minimize disruption to the surrounding community, the nature of construction work is such that some disruptions will occur. Expect some noise, vibration, dust, and other related impacts due to construction. Visit [neighbors.columbia.edu/content/600-w-125th-street#/cu\\_accordion\\_item-4958](https://neighbors.columbia.edu/content/600-w-125th-street#/cu_accordion_item-4958) to learn about our comprehensive clean construction program and mitigation protocols.
- The parking lane will be closed on the south side of W. 125th Street from Broadway to St. Clair Place. Parking will not be available on the south side of W. 125th Street from Broadway to the mid-block in front of the entire length of the 600 W. 125th Street construction fence.
- Refer to street signage for the west side of Broadway from 129th to 130th Streets — parking is allowed from 7:00 p.m. to 2:00 a.m., and on weekends

### Construction Progress Photos



600 W. 125th Street, looking southwest



Footing Rebar Installation at 600 W. 125th Street

### Need More Information?

For project updates and information, please visit [neighbors.columbia.edu](https://neighbors.columbia.edu). For questions or concerns, e-mail [projx@columbia.edu](mailto:projx@columbia.edu) or call our Services Center at 212-854-2222, 24 hours a day, seven days a week.

### Sustainable Partnerships





# Manhattanville in West Harlem Campus Plan

Construction Activities for the Next Two Weeks

**C**olumbia's long-term plan for the old Manhattanville manufacturing area will revitalize the four former industrial blocks from 125th/129th to 133rd Street between Broadway and 12th Avenue, and three small blocks along the east side of Broadway from 131st to 134th Street, into an environmentally sustainable and publicly accessible center for academic and civic life woven into the fabric of the West Harlem community.

## Construction Activities for the Weeks of May 30, 2022 and June 6, 2022

### 600 W. 125th Street

#### ***Current Phase of Construction: Excavation and Foundation:***

- Noisy work should be expected during most days during this phase of construction
- Excavation and foundation is anticipated to be complete by the end of the third quarter of 2022

#### ***What is Happening During the Next Two Weeks:***

- Utility work on 125th Street is complete and daytime utility work will begin on Broadway pending approval of permits. Work will involve the contractor saw cutting and breaking up the street to install the new building utility connections (for future water and sanitary) by using jackhammers, road saw, and backhoe. A dump truck will be used to remove material.
- Northern perimeter foundation work is in progress
- Installation of soil plugs which includes the drilling of metal sleeves and injecting concrete
- Concrete trucks will be used to install the ejector pits and elevator pit
- Underground utility installation for the building has commenced
- Excavator will be used to complete site grading and clean up

### Studebaker Building Façade Repairs and Roof Replacement

#### ***What is Happening***

- Removal of the spalled concrete wall at the east elevation is continuing on the 2nd, 3rd and 4th floors through the week of June 13, weather permitting. Removal of spalled concrete requires chipping and some jackhammering, and it will take approximately 3-4 days per floor.
- Removal of the inboard facing brick at the parapet wall on the north and west elevations is anticipated to be performed between June 2 and June 17.

## Site 4 (project site at 125th Street and 12th Avenue)

### *What is Happening*

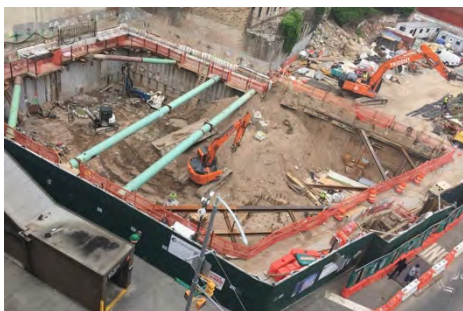
- Geothermal drilling and testing are occurring through June 3
- Flow and temperature testing is ongoing

*-Please note that all activities are subject to change based on weather and other field conditions-*

### What to Expect

- Regular working hours are 7:00 a.m. to 6:00 p.m. Monday to Friday, with hours adjusted within that window depending on the construction activity. Some work may be performed on weekends from 8:00 a.m. to 5:00 p.m. and after hours in accordance with all necessary permits. Note that contractors may mobilize on site approximately 30 to 45 minutes before work commences.
- Although contractors carefully stage construction activities to minimize disruption to the surrounding community, the nature of construction work is such that some disruptions will occur. Expect some noise, vibration, dust, and other related impacts due to construction. Visit [neighbors.columbia.edu/content/600-w-125th-street#/cu\\_accordion\\_item-4958](https://neighbors.columbia.edu/content/600-w-125th-street#/cu_accordion_item-4958) to learn about our comprehensive clean construction program and mitigation protocols.
- The parking lane will be closed on the south side of W. 125th Street from Broadway to St. Clair Place. Parking will not be available on the south side of W. 125th Street from Broadway to the mid-block in front of the entire length of the 600 W. 125th Street construction fence.
- Refer to street signage for the west side of Broadway from 129th to 130th Streets — parking is allowed from 7:00 p.m. to 2:00 a.m., and on weekends

### Construction Progress Photos



600 W. 125th Street, looking west



600 W. 125th Street, looking south

### Need More Information?

For project updates and information, please visit [neighbors.columbia.edu](https://neighbors.columbia.edu). For questions or concerns, e-mail [projx@columbia.edu](mailto:projx@columbia.edu) or call our Services Center at 212-854-2222, 24 hours a day, seven days a week.

### Sustainable Partnerships





# Manhattanville in West Harlem Campus Plan

Construction Activities for the Next Two Weeks

**C**olumbia's long-term plan for the old Manhattanville manufacturing area will revitalize the four former industrial blocks from 125th/129th to 133rd Street between Broadway and 12th Avenue, and three small blocks along the east side of Broadway from 131st to 134th Street, into an environmentally sustainable and publicly accessible center for academic and civic life woven into the fabric of the West Harlem community.

## Construction Activities for the Weeks of June 6, 2022 and June 13, 2022

### 600 W. 125th Street

#### ***Current Phase of Construction: Excavation and Foundation:***

- Noisy work should be expected during most days during this phase of construction
- Excavation and foundation is anticipated to be complete by the end of the third quarter of 2022

#### ***What is Happening During the Next Two Weeks:***

- Utility work on 125th Street is complete and daytime utility work will begin on Broadway pending approval of permits. Work will involve the contractor saw cutting and breaking up the street to install the new building utility connections (for future water and sanitary) by using jackhammers, road saw, and backhoe. A dump truck will be used to remove material.
- Northern perimeter foundation work is in progress
- Installation of soil plugs which includes the drilling of metal sleeves and injecting concrete
- Installation of dewatering system including wellpoints using drills
- Concrete trucks will be used to install the ejector pits and elevator pit
- Underground utility installation for the building has commenced
- Excavator will be used to complete site grading and clean up

### Studebaker Building Façade Repairs and Roof Replacement

#### ***What is Happening***

- Removal of the spalled concrete wall at the east elevation is continuing on the 2nd, 3rd and 4th floors through the week of June 13, weather permitting. Removal of spalled concrete requires chipping and some jackhammering, and it will take approximately 3-4 days per floor.
- Removal of the inboard facing brick at the parapet wall on the north and west elevations is anticipated to be performed through June 17.

## Site 4 (project site at 125th Street and 12th Avenue)

### ***What is Happening***

- Flow and temperature testing is ongoing

*-Please note that all activities are subject to change based on weather and other field conditions-*

### What to Expect

- Regular working hours are 7:00 a.m. to 6:00 p.m. Monday to Friday, with hours adjusted within that window depending on the construction activity. Some work may be performed on weekends from 8:00 a.m. to 5:00 p.m. and after hours in accordance with all necessary permits. Note that contractors may mobilize on site approximately 30 to 45 minutes before work commences.
- Although contractors carefully stage construction activities to minimize disruption to the surrounding community, the nature of construction work is such that some disruptions will occur. Expect some noise, vibration, dust, and other related impacts due to construction. Visit [neighbors.columbia.edu/content/600-w-125th-street#/cu\\_accordion\\_item-4958](https://neighbors.columbia.edu/content/600-w-125th-street#/cu_accordion_item-4958) to learn about our comprehensive clean construction program and mitigation protocols.
- The parking lane will be closed on the south side of W. 125th Street from Broadway to St. Clair Place. Parking will not be available on the south side of W. 125th Street from Broadway to the mid-block in front of the entire length of the 600 W. 125th Street construction fence.
- Refer to street signage for the west side of Broadway from 129th to 130th Streets — parking is allowed from 7:00 p.m. to 2:00 a.m., and on weekends

### Construction Progress Photos



Temporary power conduits at 600 W. 125th Street



Foundation work at 600 W. 125th Street

### Need More Information?

For project updates and information, please visit [neighbors.columbia.edu](https://neighbors.columbia.edu). For questions or concerns, e-mail [projx@columbia.edu](mailto:projx@columbia.edu) or call our Services Center at 212-854-2222, 24 hours a day, seven days a week.

### Sustainable Partnerships





# Manhattanville in West Harlem Campus Plan

Construction Activities for the Next Two Weeks

**C**olumbia's long-term plan for the old Manhattanville manufacturing area will revitalize the four former industrial blocks from 125th/129th to 133rd Street between Broadway and 12th Avenue, and three small blocks along the east side of Broadway from 131st to 134th Street, into an environmentally sustainable and publicly accessible center for academic and civic life woven into the fabric of the West Harlem community.

## Construction Activities for the Weeks of June 13, 2022 and June 20, 2022

### 600 W. 125th Street

#### *Current Phase of Construction: Excavation and Foundation:*

- Noisy work should be expected during most days during this phase of construction
- Excavation and foundation is anticipated to be complete by the end of the third quarter of 2022

#### *What is Happening During the Next Two Weeks:*

- Utility work on 125th Street is complete and daytime utility work will begin on Broadway pending approval of permits. Work will involve the contractor saw cutting and breaking up the street to install the new building utility connections (for future water and sanitary) by using jackhammers, road saw, and backhoe. A dump truck will be used to remove material.
- Northern perimeter foundation work is in progress
- Installation of soil plugs which includes the drilling of metal sleeves and injecting concrete
- Installation of dewatering system including wellpoints using drills
- Concrete trucks will be used to install the ejector pits, elevator pit, and mat slabs
- Underground utility installation for the building has commenced
- Excavator will be used to complete site grading and clean up

### Studebaker Building Façade Repairs and Roof Replacement

#### *What is Happening*

- Removal of the spalled concrete wall at the east elevation is nearly complete. Some localized demolition will continue on the 2nd and 3rd floors through the week of June 13.
- Prepping rebar and installation of concrete patching at the east elevation continuing through the weeks of June 13 and June 20, weather permitting.
- Installation of inboard facing brick at the parapet wall on the north elevation will continue through the week of June 13, weather permitting.
- Terra cotta repairs will commence at the south and southwest corner parapet wall for the next 3-4 weeks.

## Site 4 (project site at 125th Street and 12th Avenue)

### *What is Happening*

- Flow and temperature testing is ongoing

*-Please note that all activities are subject to change based on weather and other field conditions-*

### What to Expect

- Regular working hours are 7:00 a.m. to 6:00 p.m. Monday to Friday, with hours adjusted within that window depending on the construction activity. Some work may be performed on weekends from 8:00 a.m. to 5:00 p.m. and after hours in accordance with all necessary permits. Note that contractors may mobilize on site approximately 30 to 45 minutes before work commences.
- Although contractors carefully stage construction activities to minimize disruption to the surrounding community, the nature of construction work is such that some disruptions will occur. Expect some noise, vibration, dust, and other related impacts due to construction. Visit [neighbors.columbia.edu/content/600-w-125th-street#/cu\\_accordion\\_item-4958](https://neighbors.columbia.edu/content/600-w-125th-street#/cu_accordion_item-4958) to learn about our comprehensive clean construction program and mitigation protocols.
- The parking lane will be closed on the south side of W. 125th Street from Broadway to St. Clair Place. Parking will not be available on the south side of W. 125th Street from Broadway to the mid-block in front of the entire length of the 600 W. 125th Street construction fence.
- Refer to street signage for the west side of Broadway from 129th to 130th Streets — parking is allowed from 7:00 p.m. to 2:00 a.m., and on weekends

### Construction Progress Photos



Bracing and foundation work at 600 W. 125th Street



600 W. 125th Street, looking east

### Need More Information?

For project updates and information, please visit [neighbors.columbia.edu](https://neighbors.columbia.edu). For questions or concerns, e-mail [projx@columbia.edu](mailto:projx@columbia.edu) or call our Services Center at 212-854-2222, 24 hours a day, seven days a week.

### Sustainable Partnerships





# Manhattanville in West Harlem Campus Plan

Construction Activities for the Next Two Weeks

**C**olumbia's long-term plan for the old Manhattanville manufacturing area will revitalize the four former industrial blocks from 125th/129th to 133rd Street between Broadway and 12th Avenue, and three small blocks along the east side of Broadway from 131st to 134th Street, into an environmentally sustainable and publicly accessible center for academic and civic life woven into the fabric of the West Harlem community.

## Construction Activities for the Weeks of June 20, 2022 and June 27, 2022

### 600 W. 125th Street

#### ***Current Phase of Construction: Excavation and Foundation:***

- Noisy work should be expected during most days during this phase of construction
- Excavation and foundation is anticipated to be complete by the end of the third quarter of 2022

#### ***What is Happening During the Next Two Weeks:***

- Daytime utility work will begin on Broadway pending approval of permits. Work will involve the contractor saw cutting and breaking up the street to install the new building utility connections (for future water and sanitary) by using jackhammers, road saw, and backhoe. A dump truck will be used to remove material.
- Northern perimeter foundation work is in progress
- Installation of soil plugs which includes the drilling of metal sleeves and injecting concrete
- Installation of dewatering system including wellpoints using drills
- Concrete trucks will be used to install the ejector pits, elevator pit, and mat slabs
- Underground utility installation for the building has commenced
- Excavator will be used to complete site grading and clean up

### Studebaker Building Façade Repairs and Roof Replacement

#### ***What is Happening***

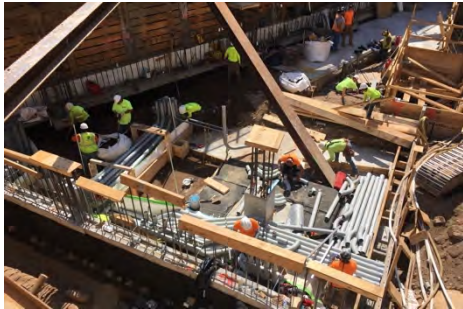
- Prepping rebar and installation of concrete patching at the east elevation is continuing
- Terra cotta repairs will commence at the south and southwest corner parapet wall for the next 3 weeks

*-Please note that all activities are subject to change based on weather and other field conditions-*

## What to Expect

- Regular working hours are 7:00 a.m. to 6:00 p.m. Monday to Friday, with hours adjusted within that window depending on the construction activity. Some work may be performed on weekends from 8:00 a.m. to 5:00 p.m. and after hours in accordance with all necessary permits. Note that contractors may mobilize on site approximately 30 to 45 minutes before work commences.
- Although contractors carefully stage construction activities to minimize disruption to the surrounding community, the nature of construction work is such that some disruptions will occur. Expect some noise, vibration, dust, and other related impacts due to construction. Visit [neighbors.columbia.edu/content/600-w-125th-street#/cu\\_accordion\\_item-4958](https://neighbors.columbia.edu/content/600-w-125th-street#/cu_accordion_item-4958) to learn about our comprehensive clean construction program and mitigation protocols.
- The parking lane will be closed on the south side of W. 125th Street from Broadway to St. Clair Place. Parking will not be available on the south side of W. 125th Street from Broadway to the mid-block in front of the entire length of the 600 W. 125th Street construction fence.
- Refer to street signage for the west side of Broadway from 129th to 130th Streets — parking is allowed from 7:00 p.m. to 2:00 a.m., and on weekends

## Construction Progress Photos



Mechanical, electrical, and plumbing work at 600 W. 125th Street



600 W. 125th Street, looking west

## Need More Information?

For project updates and information, please visit [neighbors.columbia.edu](https://neighbors.columbia.edu). For questions or concerns, e-mail [projx@columbia.edu](mailto:projx@columbia.edu) or call our Services Center at 212-854-2222, 24 hours a day, seven days a week.

## Sustainable Partnerships





# Manhattanville in West Harlem Campus Plan

Construction Activities for the Next Two Weeks

**C**olumbia's long-term plan for the old Manhattanville manufacturing area will revitalize the four former industrial blocks from 125th/129th to 133rd Street between Broadway and 12th Avenue, and three small blocks along the east side of Broadway from 131st to 134th Street, into an environmentally sustainable and publicly accessible center for academic and civic life woven into the fabric of the West Harlem community.

## Construction Activities for the Weeks of June 27, 2022 and July 4, 2022

### 600 W. 125th Street

#### ***Current Phase of Construction: Excavation and Foundation:***

- Noisy work should be expected during most days during this phase of construction
- Excavation and foundation is anticipated to be complete by the end of the third quarter of 2022

#### ***What is Happening During the Next Two Weeks:***

- Daytime utility work will begin on Broadway pending approval of permits. Work will involve the contractor saw cutting and breaking up the street to install the new building utility connections (for future water and sanitary) by using jackhammers, road saw, and backhoe. A dump truck will be used to remove material.
- Northern perimeter foundation work is in progress
- Installation of soil plugs which includes the drilling of metal sleeves and injecting concrete
- Installation of dewatering system including wellpoints using drills
- Concrete trucks will be used to install the ejector pits, elevator pit, and mat slabs
- Underground utility installation for the building has commenced
- Excavator will be used to complete site grading and clean up

### Studebaker Building Façade Repairs and Roof Replacement

#### ***What is Happening***

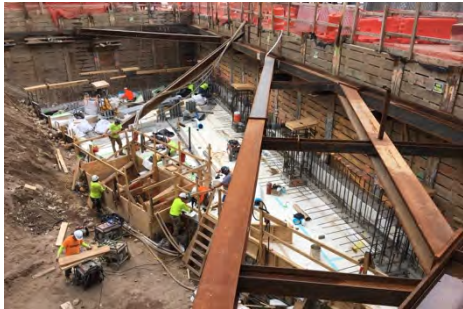
- Prepping rebar and installation of concrete patching and coating at the east elevation are continuing through the week of July 4, weather permitting
- Installation of inboard facing brick at the parapet wall on the west elevation will continue through the week of June 27, weather permitting
- Terra cotta repairs will continue at the south and southwest corner parapet wall for the next 3-4 weeks.

*-Please note that all activities are subject to change based on weather and other field conditions-*

## What to Expect

- Regular working hours are 7:00 a.m. to 6:00 p.m. Monday to Friday, with hours adjusted within that window depending on the construction activity. Some work may be performed on weekends from 8:00 a.m. to 5:00 p.m. and after hours in accordance with all necessary permits. Note that contractors may mobilize on site approximately 30 to 45 minutes before work commences.
- Although contractors carefully stage construction activities to minimize disruption to the surrounding community, the nature of construction work is such that some disruptions will occur. Expect some noise, vibration, dust, and other related impacts due to construction. Visit [neighbors.columbia.edu/content/600-w-125th-street#/cu\\_accordion\\_item-4958](https://neighbors.columbia.edu/content/600-w-125th-street#/cu_accordion_item-4958) to learn about our comprehensive clean construction program and mitigation protocols.
- The parking lane will be closed on the south side of W. 125th Street from Broadway to St. Clair Place. Parking will not be available on the south side of W. 125th Street from Broadway to the mid-block in front of the entire length of the 600 W. 125th Street construction fence.
- Refer to street signage for the west side of Broadway from 129th to 130th Streets — parking is allowed from 7:00 p.m. to 2:00 a.m., and on weekends

## Construction Progress Photos



Foundations and utilities work at 600 W. 125th Street



600 W. 125th Street, looking west

## Need More Information?

For project updates and information, please visit [neighbors.columbia.edu](https://neighbors.columbia.edu). For questions or concerns, e-mail [projx@columbia.edu](mailto:projx@columbia.edu) or call our Services Center at 212-854-2222, 24 hours a day, seven days a week.

## Sustainable Partnerships





# Manhattanville in West Harlem Campus Plan

Construction Activities for the Next Two Weeks

**C**olumbia's long-term plan for the old Manhattanville manufacturing area will revitalize the four former industrial blocks from 125th/129th to 133rd Street between Broadway and 12th Avenue, and three small blocks along the east side of Broadway from 131st to 134th Street, into an environmentally sustainable and publicly accessible center for academic and civic life woven into the fabric of the West Harlem community.

## Construction Activities for the Weeks of July 4, 2022 and July 11, 2022

### 600 W. 125th Street

#### ***Current Phase of Construction: Excavation and Foundation:***

- Noisy work should be expected during most days during this phase of construction
- Excavation and foundation is anticipated to be complete by the end of the third quarter of 2022

#### ***What is Happening During the Next Two Weeks:***

- Daytime utility work will begin on Broadway pending approval of permits. Work will involve the contractor saw cutting and breaking up the street to install the new building utility connections (for future water and sanitary) by using jackhammers, road saw, and backhoe. A dump truck will be used to remove material.
- Northern perimeter foundation work is in progress
- Installation of soil plugs which includes the drilling of metal sleeves and injecting concrete
- Installation of dewatering system including wellpoints using drills
- Concrete trucks will be used to install the ejector pits, elevator pit, and mat slabs
- Underground utility installation for the building has commenced
- Excavator will be used to complete site grading and clean up

### Studebaker Building Façade Repairs and Roof Replacement

#### ***What is Happening***

- Prepping rebar and installation of concrete patching and coating at the east elevation are continuing through the week of July 4, weather permitting
- Terra cotta repairs will continue at the south and southwest corner parapet wall for the next 3 weeks.

*-Please note that all activities are subject to change based on weather and other field conditions-*

## What to Expect

- Regular working hours are 7:00 a.m. to 6:00 p.m. Monday to Friday, with hours adjusted within that window depending on the construction activity. Some work may be performed on weekends from 8:00 a.m. to 5:00 p.m. and after hours in accordance with all necessary permits. Note that contractors may mobilize on site approximately 30 to 45 minutes before work commences.
- Although contractors carefully stage construction activities to minimize disruption to the surrounding community, the nature of construction work is such that some disruptions will occur. Expect some noise, vibration, dust, and other related impacts due to construction. Visit [neighbors.columbia.edu/content/600-w-125th-street#/cu\\_accordion\\_item-4958](https://neighbors.columbia.edu/content/600-w-125th-street#/cu_accordion_item-4958) to learn about our comprehensive clean construction program and mitigation protocols.
- The parking lane will be closed on the south side of W. 125th Street from Broadway to St. Clair Place. Parking will not be available on the south side of W. 125th Street from Broadway to the mid-block in front of the entire length of the 600 W. 125th Street construction fence.
- Refer to street signage for the west side of Broadway from 129th to 130th Streets — parking is allowed from 7:00 p.m. to 2:00 a.m., and on weekends

## Construction Progress Photos



Installation of dewatering system  
at 600 W. 125th Street



600 W. 125th Street, looking west

## Need More Information?

For project updates and information, please visit [neighbors.columbia.edu](https://neighbors.columbia.edu). For questions or concerns, e-mail [projx@columbia.edu](mailto:projx@columbia.edu) or call our Services Center at 212-854-2222, 24 hours a day, seven days a week.

## Sustainable Partnerships





# Manhattanville in West Harlem Campus Plan

Construction Activities for the Next Two Weeks

**C**olumbia's long-term plan for the old Manhattanville manufacturing area will revitalize the four former industrial blocks from 125th/129th to 133rd Street between Broadway and 12th Avenue, and three small blocks along the east side of Broadway from 131st to 134th Street, into an environmentally sustainable and publicly accessible center for academic and civic life woven into the fabric of the West Harlem community.

## Construction Activities for the Weeks of July 11, 2022 and July 18, 2022

### 600 W. 125th Street

#### ***Current Phase of Construction: Excavation and Foundation:***

- Noisy work should be expected during most days during this phase of construction
- Excavation and foundation is anticipated to be complete by the end of the third quarter of 2022

#### ***What is Happening During the Next Two Weeks:***

- Daytime utility work is anticipated to commence on the north side of 125th Street during the week of July 11, pending the approval of permits. Work will involve the contractor saw cutting and breaking up the street to install the new building utility connections (for future water and sanitary) by using jackhammers, road saw, and backhoe. A dump truck will be used to remove material. Utility work will also be performed on Broadway in the coming weeks, pending the approval of permits.
- Northern perimeter foundation work is in progress
- Installation of soil plugs which includes the drilling of metal sleeves and injecting concrete
- Installation of dewatering system including wellpoints using drills and pumps
- Concrete trucks will be used to install the ejector pits, elevator pit, and mat slabs
- Underground utility installation for the building has commenced
- An excavator will be used to complete site grading and clean up

### Studebaker Building Façade Repairs and Roof Replacement

#### ***What is Happening***

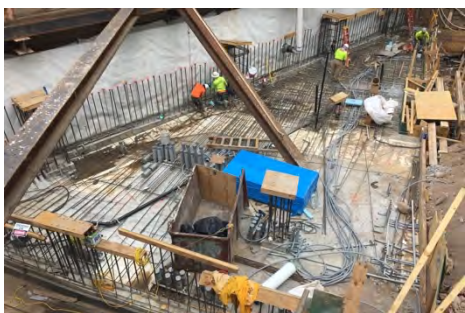
- Removal of the spalled concrete wall at the east elevation will resume later in the week of July 11. Demolition will be limited to the northeast and southeast corners and will continue for approximately 3 weeks.
- Installation of inboard facing brick at the parapet wall on the west elevation will continue through the week of July 11, weather permitting.
- Terra cotta repairs will continue at the south and southwest corner parapet wall for the next 2-3 weeks.
- Abatement of tar coating on the brick chimney on the east elevation and coping stone on the west elevation will be scheduled for the week of July 18. This tar coating is non-friable, and the abatement work is limited to the roof level only. All debris will be properly removed from the roof via the exterior scaffolding.

*-Please note that all activities are subject to change based on weather and other field conditions-*

## What to Expect

- Regular working hours are 7:00 a.m. to 6:00 p.m. Monday to Friday, with hours adjusted within that window depending on the construction activity. Some work may be performed on weekends from 8:00 a.m. to 5:00 p.m. and after hours in accordance with all necessary permits. Note that contractors may mobilize on site approximately 30 to 45 minutes before work commences.
- Although contractors carefully stage construction activities to minimize disruption to the surrounding community, the nature of construction work is such that some disruptions will occur. Expect some noise, vibration, dust, and other related impacts due to construction. Visit [neighbors.columbia.edu/content/600-w-125th-street#/cu\\_accordion\\_item-4958](https://neighbors.columbia.edu/content/600-w-125th-street#/cu_accordion_item-4958) to learn about our comprehensive clean construction program and mitigation protocols.
- The parking lane will be closed on the south side of W. 125th Street from Broadway to St. Clair Place. Parking will not be available on the south side of W. 125th Street from Broadway to the mid-block in front of the entire length of the 600 W. 125th Street construction fence.
- Refer to street signage for the west side of Broadway from 129th to 130th Streets — parking is allowed from 7:00 p.m. to 2:00 a.m., and on weekends

## Construction Progress Photos



Northern foundation and utilities work  
at 600 W. 125th Street



600 W. 125th Street, looking west

## Need More Information?

For project updates and information, please visit [neighbors.columbia.edu](https://neighbors.columbia.edu). For questions or concerns, e-mail [projx@columbia.edu](mailto:projx@columbia.edu) or call our Services Center at 212-854-2222, 24 hours a day, seven days a week.

## Sustainable Partnerships





# Manhattanville in West Harlem Campus Plan

Construction Activities for the Next Two Weeks

**C**olumbia's long-term plan for the old Manhattanville manufacturing area will revitalize the four former industrial blocks from 125th/129th to 133rd Street between Broadway and 12th Avenue, and three small blocks along the east side of Broadway from 131st to 134th Street, into an environmentally sustainable and publicly accessible center for academic and civic life woven into the fabric of the West Harlem community.

## Construction Activities for the Weeks of July 18, 2022 and July 25, 2022

### 600 W. 125th Street

#### ***Current Phase of Construction: Excavation and Foundation:***

- Noisy work should be expected during most days during this phase of construction
- Excavation and foundation is anticipated to be complete by the end of the third quarter of 2022

#### ***What is Happening During the Next Two Weeks:***

- Daytime utility work is anticipated to commence for water service on the north side of 125th Street on Friday, July 15. Work will involve the contractor saw cutting and breaking up the street to install the new building utility connections (for future water and sanitary) by using jackhammers, road saw, and backhoe. A dump truck will be used to remove material. Daytime utility work is anticipated to begin on Broadway in the coming weeks, pending the approval of permits.
- Installation of soil plugs which includes the drilling of metal sleeves and injecting concrete
- Installation of dewatering system headers and pumps to commence site dewatering
- Installation of foundation rebar, formwork, and waterproofing
- Concrete trucks will be used to install the mud slabs and mat slabs
- Underground utility installation for the building has commenced
- An excavator will be used to complete site grading, clean up, and soil removal

### Studebaker Building Façade Repairs and Roof Replacement

#### ***What is Happening***

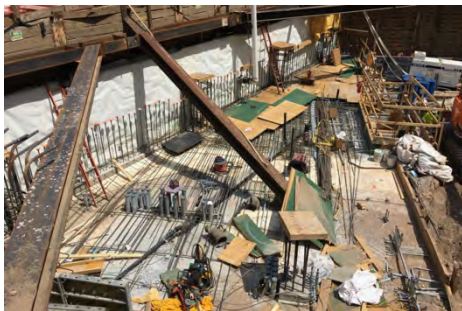
- Removal of the spalled concrete wall at the east elevation. Demolition will be limited to the northeast and southeast corners and will continue for approximately 2 weeks.
- Terra cotta repairs will continue at the south and southwest corner parapet wall for the next 2 weeks.
- Abatement of tar coating on the brick chimney on the east elevation and coping stone on the west elevation will be scheduled for the week of July 18. This tar coating is non-friable, and the abatement work is limited to the roof level only. All debris will be properly removed from the roof via the exterior scaffolding.

*-Please note that all activities are subject to change based on weather and other field conditions-*

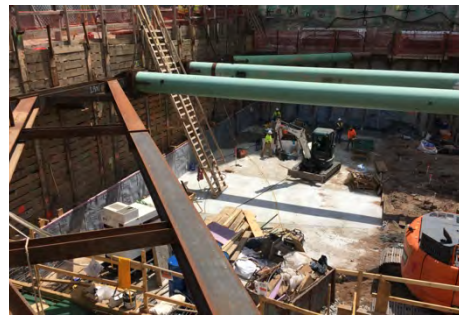
## What to Expect

- Regular working hours are 7:00 a.m. to 6:00 p.m. Monday to Friday, with hours adjusted within that window depending on the construction activity. Some work may be performed on weekends from 8:00 a.m. to 5:00 p.m. and after hours in accordance with all necessary permits. Note that contractors may mobilize on site approximately 30 to 45 minutes before work commences.
- Although contractors carefully stage construction activities to minimize disruption to the surrounding community, the nature of construction work is such that some disruptions will occur. Expect some noise, vibration, dust, and other related impacts due to construction. Visit [neighbors.columbia.edu/content/600-w-125th-street#/cu\\_accordion\\_item-4958](https://neighbors.columbia.edu/content/600-w-125th-street#/cu_accordion_item-4958) to learn about our comprehensive clean construction program and mitigation protocols.
- The parking lane will be closed on the south side of W. 125th Street from Broadway to St. Clair Place. Parking will not be available on the south side of W. 125th Street from Broadway to the mid-block in front of the entire length of the 600 W. 125th Street construction fence.
- Refer to street signage for the west side of Broadway from 129th to 130th Streets — parking is allowed from 7:00 p.m. to 2:00 a.m., and on weekends

## Construction Progress Photos



Northern foundation and utilities work  
at 600 W. 125th Street



Mud slabs and foundations work at  
600 W. 125th Street

## Need More Information?

For project updates and information, please visit [neighbors.columbia.edu](https://neighbors.columbia.edu). For questions or concerns, e-mail [projx@columbia.edu](mailto:projx@columbia.edu) or call our Services Center at 212-854-2222, 24 hours a day, seven days a week.

## Sustainable Partnerships





# Manhattanville in West Harlem Campus Plan

Construction Activities for the Next Two Weeks

**C**olumbia's long-term plan for the old Manhattanville manufacturing area will revitalize the four former industrial blocks from 125th/129th to 133rd Street between Broadway and 12th Avenue, and three small blocks along the east side of Broadway from 131st to 134th Street, into an environmentally sustainable and publicly accessible center for academic and civic life woven into the fabric of the West Harlem community.

## Construction Activities for the Weeks of July 25, 2022 and August 1, 2022

### 600 W. 125th Street

#### ***Current Phase of Construction: Excavation and Foundation:***

- Noisy work should be expected during most days during this phase of construction
- Excavation and foundation is anticipated to be complete by the end of the third quarter of 2022

#### ***What is Happening During the Next Two Weeks:***

- Daytime utility work to commence on the north side of 125th Street and Broadway, pending the approval of permits. Work will involve the contractor saw cutting and breaking up the street to install the new building utility connections (for future water and sanitary) by using jackhammers, road saw, and backhoe. A dump truck will be used to remove material.
- Installation of temporary power shed and equipment
- Installation of soil plugs which includes the drilling of metal sleeves and injecting of concrete
- Installation of dewatering system headers and pumps to commence site dewatering
- Installation of foundation rebar, formwork, and waterproofing
- Concrete trucks will be used to install the mud slabs and mat slabs
- Underground utility installation for the building has commenced
- An excavator will be used to complete site grading, clean up, and soil removal
- Regular work hours temporarily extended until 8:00 p.m. Monday through Friday

### Studebaker Building Façade Repairs and Roof Replacement

#### ***What is Happening***

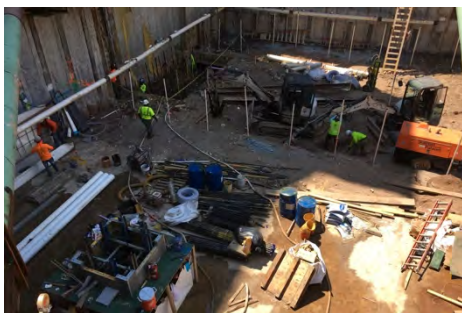
- Removal of the spalled concrete wall at the east elevation will resume the week of August 1. Demolition will be limited to the northeast and southeast corners and will continue for approximately 2-3 weeks.
- Installation of facing brick at the parapet wall on the west elevation, east elevation and the bulkhead elevation will continue through the weeks of July 25 and August 1.
- Terra cotta repairs will continue at the south and southwest corner parapet wall for the next 2-3 weeks.
- The sidewalk bridge on West 132nd Street (north elevation) will be replaced the week of August 1. The existing sidewalk bridge will be removed and a new sidewalk will be installed.

*-Please note that all activities are subject to change based on weather and other field conditions-*

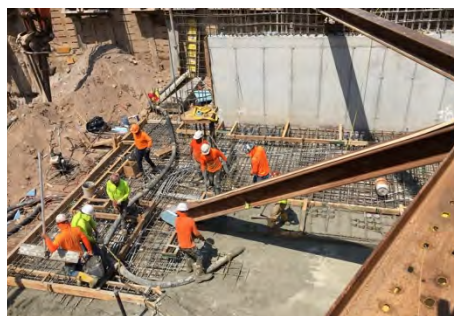
## What to Expect

- Regular working hours are 7:00 a.m. to 6:00 p.m. Monday to Friday, with after-hours work occurring until 8:00 p.m. Some work may be performed on weekends from 8:00 a.m. to 5:00 p.m. and after hours in accordance with all necessary permits. Note that contractors may mobilize on site approximately 30 to 45 minutes before work commences.
- Although contractors carefully stage construction activities to minimize disruption to the surrounding community, the nature of construction work is such that some disruptions will occur. Expect some noise, vibration, dust, and other related impacts due to construction. Visit [neighbors.columbia.edu/content/600-w-125th-street#/cu\\_accordion\\_item-4958](https://neighbors.columbia.edu/content/600-w-125th-street#/cu_accordion_item-4958) to learn about our comprehensive clean construction program and mitigation protocols.
- The parking lane will be closed on the south side of W. 125th Street from Broadway to St. Clair Place. Parking will not be available on the south side of W. 125th Street from Broadway to the mid-block in front of the entire length of the 600 W. 125th Street construction fence.
- Refer to street signage for the west side of Broadway from 129th to 130th Streets — parking is allowed from 7:00 p.m. to 2:00 a.m., and on weekends

## Construction Progress Photos



Ejector pit and dewatering system at  
600 W. 125th Street



Northern slab at 600 W. 125th Street

## Need More Information?

For project updates and information, please visit [neighbors.columbia.edu](https://neighbors.columbia.edu). For questions or concerns, e-mail [projx@columbia.edu](mailto:projx@columbia.edu) or call our Services Center at 212-854-2222, 24 hours a day, seven days a week.

## Sustainable Partnerships





# Manhattanville in West Harlem Campus Plan

Construction Activities for the Next Two Weeks

**C**olumbia's long-term plan for the old Manhattanville manufacturing area will revitalize the four former industrial blocks from 125th/129th to 133rd Street between Broadway and 12th Avenue, and three small blocks along the east side of Broadway from 131st to 134th Street, into an environmentally sustainable and publicly accessible center for academic and civic life woven into the fabric of the West Harlem community.

## Construction Activities for the Weeks of August 1, 2022 and August 8, 2022

### 600 W. 125th Street

#### ***Current Phase of Construction: Excavation and Foundation:***

- Noisy work should be expected during most days during this phase of construction
- Excavation and foundation is anticipated to be complete by the end of the third quarter of 2022

#### ***What is Happening During the Next Two Weeks:***

- Daytime utility work to commence on the north side of 125th Street and Broadway, pending the approval of permits. Work will involve the contractor saw cutting and breaking up the street to install the new building utility connections (for future water and sanitary) by using jackhammers, road saw, and backhoe. A dump truck will be used to remove material.
- Site dewatering is in progress
- Elevator pit excavation and concrete installation
- Crane pad support of excavation installation
- Installation of foundation and mat slab rebar, formwork, and waterproofing
- Concrete trucks will be used to install the mud slabs and mat slabs
- Underground utility layout and installation
- An excavator will be used to complete site grading, clean up, and soil removal
- Regular work hours temporarily extended until 8:00 p.m. Monday through Friday

### Studebaker Building Façade Repairs and Roof Replacement

#### ***What is Happening***

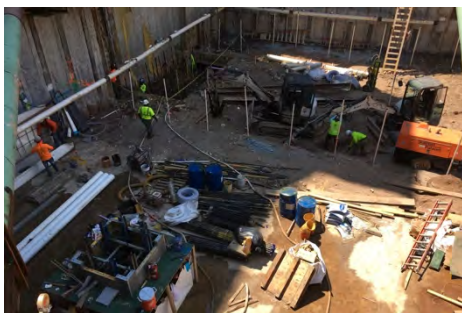
- Removal of the spalled concrete wall at the east elevation. Demolition will be limited to the northeast and southeast corners and will continue for approximately 2-3 weeks.
- Installation of facing brick at the parapet wall on the west elevation, east elevation and the bulkhead elevation
- Terra cotta repairs will continue at the south and southwest corner parapet wall for the next 2 weeks.
- The sidewalk bridge on West 132nd Street (north elevation) to be replaced. The existing sidewalk bridge will be removed and a new sidewalk will be installed.

*-Please note that all activities are subject to change based on weather and other field conditions-*

## What to Expect

- Regular working hours are 7:00 a.m. to 6:00 p.m. Monday to Friday, with after-hours work occurring until 8:00 p.m. Some work may be performed on weekends from 8:00 a.m. to 5:00 p.m. and after hours in accordance with all necessary permits. Note that contractors may mobilize on site approximately 30 to 45 minutes before work commences.
- Although contractors carefully stage construction activities to minimize disruption to the surrounding community, the nature of construction work is such that some disruptions will occur. Expect some noise, vibration, dust, and other related impacts due to construction. Visit [neighbors.columbia.edu/content/600-w-125th-street#/cu\\_accordion\\_item-4958](https://neighbors.columbia.edu/content/600-w-125th-street#/cu_accordion_item-4958) to learn about our comprehensive clean construction program and mitigation protocols.
- The parking lane will be closed on the south side of W. 125th Street from Broadway to St. Clair Place. Parking will not be available on the south side of W. 125th Street from Broadway to the mid-block in front of the entire length of the 600 W. 125th Street construction fence.
- Refer to street signage for the west side of Broadway from 129th to 130th Streets — parking is allowed from 7:00 p.m. to 2:00 a.m., and on weekends

## Construction Progress Photos



600 W. 125th Street, looking west



Elevator pit and dewatering system at 600 W. 125th Street

## Need More Information?

For project updates and information, please visit [neighbors.columbia.edu](https://neighbors.columbia.edu). For questions or concerns, e-mail [projx@columbia.edu](mailto:projx@columbia.edu) or call our Services Center at 212-854-2222, 24 hours a day, seven days a week.

## Sustainable Partnerships





# Manhattanville in West Harlem Campus Plan

Construction Activities for the Next Two Weeks

**C**olumbia's long-term plan for the old Manhattanville manufacturing area will revitalize the four former industrial blocks from 125th/129th to 133rd Street between Broadway and 12th Avenue, and three small blocks along the east side of Broadway from 131st to 134th Street, into an environmentally sustainable and publicly accessible center for academic and civic life woven into the fabric of the West Harlem community.

## Construction Activities for the Weeks of August 8, 2022 and August 15, 2022

### 600 W. 125th Street

#### ***Current Phase of Construction: Excavation and Foundation:***

- Noisy work should be expected during most days during this phase of construction
- Excavation and foundation is anticipated to be complete by the end of the third quarter of 2022

#### ***What is Happening During the Next Two Weeks:***

- Daytime utility work on the north side of 125th Street and Broadway has commenced. Work will involve the contractor saw cutting and breaking up the street and sidewalk to install the new building utility connections (for future water and sanitary) by using jackhammers, road saw, and backhoe. A dump truck will be used to remove material.
- Site dewatering is in progress
- Elevator pit excavation and concrete installation
- Crane pad support of excavation installation
- Installation of foundation and mat slab rebar, formwork, and waterproofing
- Concrete trucks will be used to install the mud slabs and mat slabs
- Underground utility layout and installation
- An excavator will be used to complete site grading, clean up, and soil removal
- Regular work hours temporarily extended until 8:00 p.m. Monday through Friday

### Studebaker Building Façade Repairs and Roof Replacement

#### ***What is Happening***

- Removal of the spalled concrete wall at the east elevation will continue during the weeks of August 8 and August 15. Demolition will be limited to the southeast corner and the ground level.
- Terra cotta repairs will continue at the south and southwest corner parapet wall.
- Pipe scaffolding will be installed on W. 132nd Street at the north elevation during the weeks of August 8 and August 15. Pipe scaffolding will cover the entire north elevation.

*-Please note that all activities are subject to change based on weather and other field conditions-*

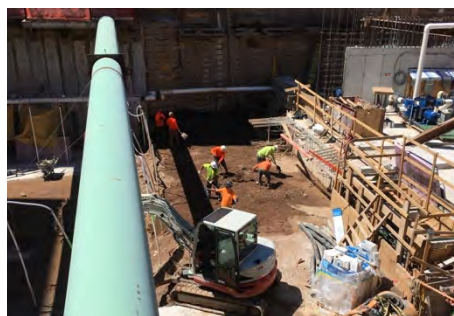
## What to Expect

- Regular working hours are 7:00 a.m. to 6:00 p.m. Monday to Friday, with after-hours work occurring until 8:00 p.m. Some work may be performed on weekends from 8:00 a.m. to 5:00 p.m. and after hours in accordance with all necessary permits. Note that contractors may mobilize on site approximately 30 to 45 minutes before work commences.
- Although contractors carefully stage construction activities to minimize disruption to the surrounding community, the nature of construction work is such that some disruptions will occur. Expect some noise, vibration, dust, and other related impacts due to construction. Visit [neighbors.columbia.edu/content/600-w-125th-street#/cu\\_accordion\\_item-4958](https://neighbors.columbia.edu/content/600-w-125th-street#/cu_accordion_item-4958) to learn about our comprehensive clean construction program and mitigation protocols.
- The parking lane will be closed on the south side of W. 125th Street from Broadway to St. Clair Place. Parking will not be available on the south side of W. 125th Street from Broadway to the mid-block in front of the entire length of the 600 W. 125th Street construction fence.
- Refer to street signage for the west side of Broadway from 129th to 130th Streets — parking is allowed from 7:00 p.m. to 2:00 a.m., and on weekends

## Construction Progress Photos



600 W. 125th Street, looking south



Mud slab work at 600 W. 125th Street

## Need More Information?

For project updates and information, please visit [neighbors.columbia.edu](https://neighbors.columbia.edu). For questions or concerns, e-mail [projx@columbia.edu](mailto:projx@columbia.edu) or call our Services Center at 212-854-2222, 24 hours a day, seven days a week.

## Sustainable Partnerships





# Manhattanville in West Harlem Campus Plan

Construction Activities for the Next Two Weeks

**C**olumbia's long-term plan for the old Manhattanville manufacturing area will revitalize the four former industrial blocks from 125th/129th to 133rd Street between Broadway and 12th Avenue, and three small blocks along the east side of Broadway from 131st to 134th Street, into an environmentally sustainable and publicly accessible center for academic and civic life woven into the fabric of the West Harlem community.

## Construction Activities for the Weeks of August 15, 2022 and August 22, 2022

### 600 W. 125th Street

#### ***Current Phase of Construction: Excavation and Foundation:***

- Noisy work should be expected during most days during this phase of construction
- Excavation and foundation is anticipated to be complete by the end of the third quarter of 2022

#### ***What is Happening During the Next Two Weeks:***

- Daytime utility work on the north side of 125th Street and Broadway has commenced. Work will involve the contractor saw cutting and breaking up the street and sidewalk to install the new building utility connections (for future water and sanitary) by using jackhammers, road saw, and backhoe. A dump truck will be used to remove material.
- Site dewatering is in progress
- Elevator pit excavation and concrete installation
- Crane pad support of excavation installation
- Installation of foundation and mat slab rebar, formwork, and waterproofing
- Concrete trucks will be used to install the mud slabs and mat slabs
- Underground utility layout and installation
- An excavator will be used to complete site grading, clean up, and soil removal
- Regular work hours temporarily extended until 8:00 p.m. Monday through Friday

### Studebaker Building Façade Repairs and Roof Replacement

#### ***What is Happening***

- Removal of the spalled concrete wall at the east elevation will continue through the week of August 15. Demolition will be limited to the southeast corner and the ground level.
- Terra cotta repairs will continue at the south and southwest corner parapet wall.
- Pipe scaffolding will be installed on W. 132nd Street at the north elevation through the week of August 15. Pipe scaffolding will cover the entire north elevation.

*-Please note that all activities are subject to change based on weather and other field conditions-*

## What to Expect

- Regular working hours are 7:00 a.m. to 6:00 p.m. Monday to Friday, with after-hours work occurring until 8:00 p.m. Some work may be performed on weekends from 8:00 a.m. to 5:00 p.m. and after hours in accordance with all necessary permits. Note that contractors may mobilize on site approximately 30 to 45 minutes before work commences.
- Although contractors carefully stage construction activities to minimize disruption to the surrounding community, the nature of construction work is such that some disruptions will occur. Expect some noise, vibration, dust, and other related impacts due to construction. Visit [neighbors.columbia.edu/content/600-w-125th-street#/cu\\_accordion\\_item-4958](https://neighbors.columbia.edu/content/600-w-125th-street#/cu_accordion_item-4958) to learn about our comprehensive clean construction program and mitigation protocols.
- The parking lane will be closed on the south side of W. 125th Street from Broadway to St. Clair Place. Parking will not be available on the south side of W. 125th Street from Broadway to the mid-block in front of the entire length of the 600 W. 125th Street construction fence.
- Refer to street signage for the west side of Broadway from 129th to 130th Streets — parking is allowed from 7:00 p.m. to 2:00 a.m., and on weekends

## Construction Progress Photos



600 W. 125th Street, looking south



Waterproofing at 600 W. 125th Street

## Need More Information?

For project updates and information, please visit [neighbors.columbia.edu](https://neighbors.columbia.edu). For questions or concerns, e-mail [projx@columbia.edu](mailto:projx@columbia.edu) or call our Services Center at 212-854-2222, 24 hours a day, seven days a week.

## Sustainable Partnerships





# Manhattanville in West Harlem Campus Plan

Construction Activities for the Next Two Weeks

**C**olumbia's long-term plan for the old Manhattanville manufacturing area will revitalize the four former industrial blocks from 125th/129th to 133rd Street between Broadway and 12th Avenue, and three small blocks along the east side of Broadway from 131st to 134th Street, into an environmentally sustainable and publicly accessible center for academic and civic life woven into the fabric of the West Harlem community.

## Construction Activities for the Weeks of August 22, 2022 and August 29, 2022

### 600 W. 125th Street

#### ***Current Phase of Construction: Excavation and Foundation:***

- Noisy work should be expected during most days during this phase of construction
- Excavation and foundation is anticipated to be complete by the end of the third quarter of 2022

#### ***What is Happening During the Next Two Weeks:***

- Daytime utility work on 125th Street and Broadway has commenced. Work will involve the contractor saw cutting and breaking up the street and sidewalk to install the new building utility connections (for future water and sanitary) by using jackhammers, road saw, and backhoe. A dump truck will be used to remove material.
- Site dewatering is in progress
- Crane pad support of excavation installation
- Installation of foundation and mat slab rebar, formwork, and waterproofing
- Concrete trucks will be used to install foundation walls
- Underground utility layout and installation
- An excavator will be used to complete site grading and clean up
- Regular work hours temporarily extended until 8:00 p.m., Monday through Friday

### Studebaker Building Façade Repairs and Roof Replacement

#### ***What is Happening***

- Removal of the spalled concrete wall at the east elevation southeast corner is complete. The concrete wall will be patched and coated during the week of August 22.
- Terra cotta repairs will continue at the south and southwest corner parapet wall.
- Pipe scaffolding installation is complete, and inspection and repairs of the terra cotta will begin at the north elevation parapet wall.

*-Please note that all activities are subject to change based on weather and other field conditions-*

## What to Expect

- Regular working hours are 7:00 a.m. to 6:00 p.m. Monday to Friday, with after-hours work occurring until 8:00 p.m. Some work may be performed on weekends from 8:00 a.m. to 5:00 p.m. and after hours in accordance with all necessary permits. Note that contractors may mobilize on site approximately 30 to 45 minutes before work commences.
- Although contractors carefully stage construction activities to minimize disruption to the surrounding community, the nature of construction work is such that some disruptions will occur. Expect some noise, vibration, dust, and other related impacts due to construction. Visit [neighbors.columbia.edu/content/600-w-125th-street#/cu\\_accordion\\_item-4958](https://neighbors.columbia.edu/content/600-w-125th-street#/cu_accordion_item-4958) to learn about our comprehensive clean construction program and mitigation protocols.
- The parking lane will be closed on the south side of W. 125th Street from Broadway to St. Clair Place. Parking will not be available on the south side of W. 125th Street from Broadway to the mid-block in front of the entire length of the 600 W. 125th Street construction fence.
- Refer to street signage for the west side of Broadway from 129th to 130th Streets — parking is allowed from 7:00 p.m. to 2:00 a.m., and on weekends

## Construction Progress Photos



600 W. 125th Street, looking west



Northern foundation wall at 600 W. 125th Street

## Need More Information?

For project updates and information, please visit [neighbors.columbia.edu](https://neighbors.columbia.edu). For questions or concerns, e-mail [projx@columbia.edu](mailto:projx@columbia.edu) or call our Services Center at 212-854-2222, 24 hours a day, seven days a week.

## Sustainable Partnerships





# Manhattanville in West Harlem Campus Plan

Construction Activities for the Next Two Weeks

**C**olumbia's long-term plan for the old Manhattanville manufacturing area will revitalize the four former industrial blocks from 125th/129th to 133rd Street between Broadway and 12th Avenue, and three small blocks along the east side of Broadway from 131st to 134th Street, into an environmentally sustainable and publicly accessible center for academic and civic life woven into the fabric of the West Harlem community.

## Construction Activities for the Weeks of August 29, 2022 and September 5, 2022

### 600 W. 125th Street

#### ***Current Phase of Construction: Excavation and Foundation:***

- Noisy work should be expected during most days during this phase of construction
- Excavation and foundation is anticipated to be complete by the end of the third quarter of 2022

#### ***What is Happening During the Next Two Weeks:***

- Daytime utility work on 125th Street is in progress. Work will involve the contractor saw cutting and breaking up the street and sidewalk to install the new building utility connections (for future water and sanitary) by using jackhammers, road saw, and backhoe. A dump truck will be used to remove material.
- Site dewatering is in progress
- Installation of mat slab rebar and foundations formwork, and waterproofing
- Concrete trucks will be used to install building mat slab and foundation walls
- Underground utility layout and installation
- An excavator will be used to complete site grading and clean up
- Regular work hours temporarily extended until 8:00 p.m., Monday through Friday

### Studebaker Building Façade Repairs and Roof Replacement

#### ***What is Happening***

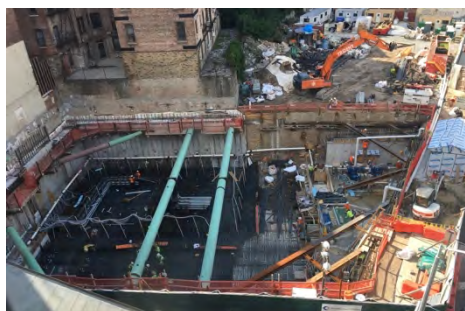
- Terra cotta repairs will continue at the south and southwest corner parapet wall
- Inspection and repairs of the terra cotta at the north elevation parapet wall

*-Please note that all activities are subject to change based on weather and other field conditions-*

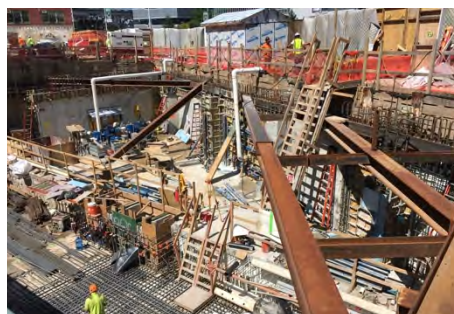
## What to Expect

- Regular working hours are 7:00 a.m. to 6:00 p.m. Monday to Friday, with after-hours work occurring until 8:00 p.m. Some work may be performed on weekends from 8:00 a.m. to 5:00 p.m. and after hours in accordance with all necessary permits. Note that contractors may mobilize on site approximately 30 to 45 minutes before work commences.
- Although contractors carefully stage construction activities to minimize disruption to the surrounding community, the nature of construction work is such that some disruptions will occur. Expect some noise, vibration, dust, and other related impacts due to construction. Visit [neighbors.columbia.edu/content/600-w-125th-street#/cu\\_accordion\\_item-4958](https://neighbors.columbia.edu/content/600-w-125th-street#/cu_accordion_item-4958) to learn about our comprehensive clean construction program and mitigation protocols.
- The parking lane will be closed on the south side of W. 125th Street from Broadway to St. Clair Place. Parking will not be available on the south side of W. 125th Street from Broadway to the mid-block in front of the entire length of the 600 W. 125th Street construction fence.
- Refer to street signage for the west side of Broadway from 129th to 130th Streets — parking is allowed from 7:00 p.m. to 2:00 a.m., and on weekends

## Construction Progress Photos



600 W. 125th Street, looking west



Northern foundation wall at 600 W. 125th Street

## Need More Information?

For project updates and information, please visit [neighbors.columbia.edu](https://neighbors.columbia.edu). For questions or concerns, e-mail [projx@columbia.edu](mailto:projx@columbia.edu) or call our Services Center at 212-854-2222, 24 hours a day, seven days a week.

## Sustainable Partnerships





# Manhattanville in West Harlem Campus Plan

Construction Activities for the Next Two Weeks

**C**olumbia's long-term plan for the old Manhattanville manufacturing area will revitalize the four former industrial blocks from 125th/129th to 133rd Street between Broadway and 12th Avenue, and three small blocks along the east side of Broadway from 131st to 134th Street, into an environmentally sustainable and publicly accessible center for academic and civic life woven into the fabric of the West Harlem community.

## Construction Activities for the Weeks of September 5, 2022 and September 12, 2022

### 600 W. 125th Street

#### ***Current Phase of Construction: Excavation and Foundation:***

- Noisy work should be expected during most days during this phase of construction
- Excavation and foundation is anticipated to be complete by the end of the third quarter of 2022

#### ***What is Happening During the Next Two Weeks:***

- On Saturday, September 10, beginning at 5 a.m., a monolithic concrete pour will be performed to create the building's foundation. The work will involve concrete trucks pouring concrete continuously over a 12-hour period to be completed by approximately 6:00 p.m., with additional cleanup and other finishing activities lasting into the evening. Equipment and concrete pumps will be set up the day before during normal hours (7:00 a.m. to 6:00 p.m.).
- Daytime utility work on 125th Street is in progress. Work involves the contractor saw cutting and breaking up the street and sidewalk to install the new building utility connections (for future water and sanitary) by using jackhammers, road saw, and backhoe. A dump truck will be used to remove material. Utility work on Broadway will start in the coming weeks.
- Site dewatering is in progress
- Installation of mat slab rebar, foundations formwork, waterproofing, and steel bracing
- Concrete trucks will be used to install building mat slab and foundation walls
- Underground utility layout and installation
- An excavator will be used to complete site grading and clean up
- Installation of sidewalk protection and adjacent building protection
- Regular work hours temporarily extended until 8:00 p.m., Monday through Friday

### Studebaker Building Façade Repairs and Roof Replacement

#### ***What is Happening***

- The concrete wall at the east elevation ground level will be patched and coated during the weeks of September 5 and 12.
- The brick at the base of the elevator tower will be replaced.
- Terra cotta repairs will continue at the south and southwest corner parapet wall which includes rebuilding the piers.
- Selective areas of terra cotta, concrete and brick piers will be demolished at the north parapet wall during the weeks of September 5 and 12.

## Studebaker Building Façade Repairs and Roof Replacement (cont.)

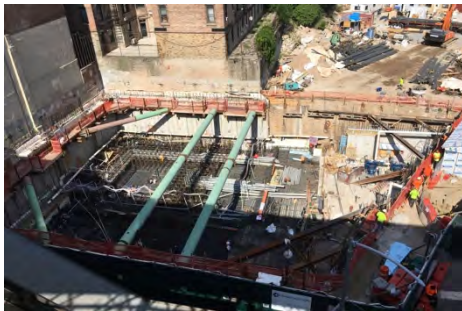
- Beginning September 20, additional scaffolding will be installed on the west elevation.

*-Please note that all activities are subject to change based on weather and other field conditions-*

### What to Expect

- Regular working hours are 7:00 a.m. to 6:00 p.m. Monday to Friday, with after-hours work occurring until 8:00 p.m. Some work may also be performed on weekends from 8:00 a.m. to 5:00 p.m. and after hours in accordance with all necessary permits. Note that contractors may mobilize on site approximately 30 to 45 minutes before work commences.
- On Saturday, September 10, work will begin at 5:00 a.m., with the concrete pour anticipated to be completed by approximately 6:00 p.m., and additional cleanup and other finishing activities lasting into the evening. Approximately 20 concrete trucks will be staged on 125th Street and 12th Avenue for deliveries, and trucks will be washed out offsite at 608 W. 132nd Street.
- Although contractors carefully stage construction activities to minimize disruption to the surrounding community, the nature of construction work is such that some disruptions will occur. Expect some noise, vibration, dust, and other related impacts due to construction. Visit [neighbors.columbia.edu/content/600-w-125th-street#/cu\\_accordion\\_item-4958](https://neighbors.columbia.edu/content/600-w-125th-street#/cu_accordion_item-4958) to learn about our comprehensive clean construction program and mitigation protocols.
- The parking lane will be closed on the south side of W. 125th Street from Broadway to St. Clair Place. Parking will not be available on the south side of W. 125th Street from Broadway to the mid-block in front of the entire length of the 600 W. 125th Street construction fence.
- Refer to street signage for the west side of Broadway from 129th to 130th Streets — parking is allowed from 7:00 p.m. to 2:00 a.m., and on weekends

### Construction Progress Photos



600 W. 125th Street, looking west



600 W. 125th Street, looking south

### Need More Information?

For project updates and information, please visit [neighbors.columbia.edu](https://neighbors.columbia.edu). For questions or concerns, e-mail [projx@columbia.edu](mailto:projx@columbia.edu) or call our Services Center at 212-854-2222, 24 hours a day, seven days a week.

### Sustainable Partnerships





# Manhattanville in West Harlem Campus Plan

Construction Activities for the Next Two Weeks

**C**olumbia's long-term plan for the old Manhattanville manufacturing area will revitalize the four former industrial blocks from 125th/129th to 133rd Street between Broadway and 12th Avenue, and three small blocks along the east side of Broadway from 131st to 134th Street, into an environmentally sustainable and publicly accessible center for academic and civic life woven into the fabric of the West Harlem community.

## Construction Activities for the Weeks of September 12, 2022 and September 19, 2022

### 600 W. 125th Street

#### *Current Phase of Construction: Excavation and Foundation:*

- Noisy work should be expected during most days during this phase of construction
- Excavation and foundation is anticipated to be complete by the end of the third quarter of 2022

#### *What is Happening During the Next Two Weeks:*

- **On Saturday, September 17, 2022, beginning at 5 a.m., a monolithic concrete pour will be performed at 600 W. 125th Street to create the building's foundation.** This work was rescheduled from Saturday, September 10 due to unexpected delays in receiving required materials for the concrete. The work will involve concrete trucks pouring concrete continuously over a 12-hour period to be completed by approximately 6:00 p.m., with additional cleanup and other finishing activities lasting into the evening. Equipment and concrete pumps will be set up the day before during normal hours (7:00 a.m. to 6:00 p.m.).
- Daytime utility work on Broadway will start in the coming weeks. Work involves the contractor saw cutting and breaking up the street and sidewalk to install the new building utility connections (for future water and sanitary) by using jackhammers, road saw, and backhoe. A dump truck will be used to remove material.
- Site dewatering is in progress
- Installation of mat slab rebar, foundations formwork, waterproofing, and steel bracing
- Concrete trucks will be used to install building mat slab and foundation walls
- Underground utility layout and installation
- An excavator will be used to perform cleanup and Con Edison vault pits
- Installation of sidewalk protection and adjacent building protection
- Regular work hours temporarily extended until 8:00 p.m., Monday through Friday

### Studebaker Building Façade Repairs and Roof Replacement

#### *What is Happening*

- The concrete wall at the east elevation ground level will be patched and coated
- The brick at the base of the elevator tower will be replaced
- Terra cotta repairs will continue at the south and southwest corner parapet wall which includes rebuilding the piers
- Selective areas of terra cotta, concrete and brick piers will be demolished at the north parapet wall

## Studebaker Building Façade Repairs and Roof Replacement (cont.)

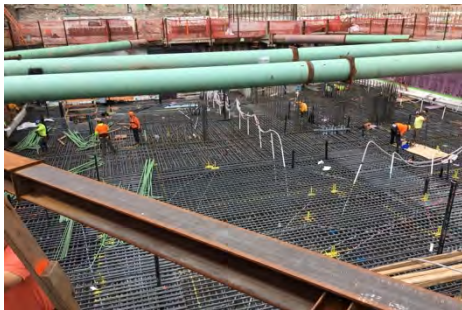
- Beginning September 20, additional scaffolding will be installed on the west elevation.

*-Please note that all activities are subject to change based on weather and other field conditions-*

### What to Expect

- Regular working hours are 7:00 a.m. to 6:00 p.m. Monday to Friday, with after-hours work occurring until 8:00 p.m. Some work may also be performed on weekends from 8:00 a.m. to 5:00 p.m. and after hours in accordance with all necessary permits. Note that contractors may mobilize on site approximately 30 to 45 minutes before work commences.
- On Saturday, September 17, work will begin at 5:00 a.m., with the concrete pour anticipated to be completed by approximately 6:00 p.m., and additional cleanup and other finishing activities lasting into the evening. Approximately 20 concrete trucks will be staged on 125th Street and 12th Avenue for deliveries, and trucks will be washed out offsite at 608 W. 132nd Street.**
- Although contractors carefully stage construction activities to minimize disruption to the surrounding community, the nature of construction work is such that some disruptions will occur. Expect some noise, vibration, dust, and other related impacts due to construction. Visit [neighbors.columbia.edu/content/600-w-125th-street#/cu\\_accordion\\_item-4958](https://neighbors.columbia.edu/content/600-w-125th-street#/cu_accordion_item-4958) to learn about our comprehensive clean construction program and mitigation protocols.
- The parking lane will be closed on the south side of W. 125th Street from Broadway to St. Clair Place. Parking will not be available on the south side of W. 125th Street from Broadway to the mid-block in front of the entire length of the 600 W. 125th Street construction fence.
- Refer to street signage for the west side of Broadway from 129th to 130th Streets — parking is allowed from 7:00 p.m. to 2:00 a.m., and on weekends

### Construction Progress Photos



600 W. 125th Street, looking south



Northern foundation wall at 600 W. 125th Street

### Need More Information?

For project updates and information, please visit [neighbors.columbia.edu](https://neighbors.columbia.edu). For questions or concerns, e-mail [projx@columbia.edu](mailto:projx@columbia.edu) or call our Services Center at 212-854-2222, 24 hours a day, seven days a week.

### Sustainable Partnerships





# Manhattanville in West Harlem Campus Plan

Construction Activities for the Next Two Weeks

**C**olumbia's long-term plan for the old Manhattanville manufacturing area will revitalize the four former industrial blocks from 125th/129th to 133rd Street between Broadway and 12th Avenue, and three small blocks along the east side of Broadway from 131st to 134th Street, into an environmentally sustainable and publicly accessible center for academic and civic life woven into the fabric of the West Harlem community.

## Construction Activities for the Weeks of September 19, 2022 and September 26, 2022

### 600 W. 125th Street

#### *Current Phase of Construction: Excavation and Foundation:*

- Noisy work should be expected during most days during this phase of construction
- Excavation and foundation is anticipated to be complete by the end of the third quarter of 2022

#### *What is Happening During the Next Two Weeks:*

- **On Saturday, September 17, 2022, beginning at 5 a.m., a monolithic concrete pour will be performed at 600 W. 125th Street to create the building's foundation.** The work will involve concrete trucks pouring concrete continuously over a 12-hour period to be completed by approximately 6:00 p.m., with additional cleanup and other finishing activities lasting into the evening.
- Daytime utility work on Broadway will start in the coming weeks. Work will involve the contractor saw cutting and breaking up the street and sidewalk to install the new building utility connections (for future water and sanitary) by using jackhammers, road saw, and backhoe. A dump truck will be used to remove material.
- Site dewatering is in progress
- Installation of mat slab, foundation wall formwork and rebar, waterproofing, and steel bracing
- Concrete trucks will be used to install building mat slab and foundation walls
- An excavator will be used to perform cleanup and Con Edison vault pits
- Installation of sidewalk protection and adjacent building protection
- Regular work hours temporarily extended until 8:00 p.m., Monday through Friday

### Studebaker Building Façade Repairs and Roof Replacement

#### *What is Happening*

- Terra cotta repairs will continue at the north parapet wall. Intermittent drilling is expected.
- Beginning September 20, sidewalk bridge and additional section of pipe scaffolding will be installed on the west elevation. Installation will take approximately 5 to 7 days, weather permitting. Intermittent metal clanking and hammering noises are expected.
- Once the scaffolding is erected at the west elevation, selective areas of terra cotta, concrete and brick piers will be demolished at the north end of the west parapet wall during the week of September 26. Intermittent drilling and grinding noise and dust are expected.

*-Please note that all activities are subject to change based on weather and other field conditions-*

## What to Expect

- Regular working hours are 7:00 a.m. to 6:00 p.m. Monday to Friday, with after-hours work occurring until 8:00 p.m. Some work may also be performed on weekends from 8:00 a.m. to 5:00 p.m. and after hours in accordance with all necessary permits. Note that contractors may mobilize on site approximately 30 to 45 minutes before work commences.
- **On Saturday, September 17, work will begin at 5:00 a.m.**, with the concrete pour anticipated to be completed by approximately 6:00 p.m., and additional cleanup and other finishing activities lasting into the evening. Approximately 20 concrete trucks will be staged on 125th Street and 12th Avenue for deliveries, and trucks will be washed out offsite at 608 W. 132nd Street.
- Although contractors carefully stage construction activities to minimize disruption to the surrounding community, the nature of construction work is such that some disruptions will occur. Expect some noise, vibration, dust, and other related impacts due to construction. Visit [neighbors.columbia.edu/content/600-w-125th-street#/cu\\_accordion\\_item-4958](https://neighbors.columbia.edu/content/600-w-125th-street#/cu_accordion_item-4958) to learn about our comprehensive clean construction program and mitigation protocols.
- The parking lane will be closed on the south side of W. 125th Street from Broadway to St. Clair Place. Parking will not be available on the south side of W. 125th Street from Broadway to the mid-block in front of the entire length of the 600 W. 125th Street construction fence.
- Refer to street signage for the west side of Broadway from 129th to 130th Streets — parking is allowed from 7:00 p.m. to 2:00 a.m., and on weekends

## Construction Progress Photos



600 W. 125th Street, looking west



Southern foundation wall at 600 W. 125th Street

## Need More Information?

For project updates and information, please visit [neighbors.columbia.edu](https://neighbors.columbia.edu). For questions or concerns, e-mail [projx@columbia.edu](mailto:projx@columbia.edu) or call our Services Center at 212-854-2222, 24 hours a day, seven days a week.

## Sustainable Partnerships





# Manhattanville in West Harlem Campus Plan

Construction Activities for the Next Two Weeks

**C**olumbia's long-term plan for the old Manhattanville manufacturing area will revitalize the four former industrial blocks from 125th/129th to 133rd Street between Broadway and 12th Avenue, and three small blocks along the east side of Broadway from 131st to 134th Street, into an environmentally sustainable and publicly accessible center for academic and civic life woven into the fabric of the West Harlem community.

## Construction Activities for the Weeks of September 26, 2022 and October 3, 2022

### 600 W. 125th Street

#### ***Current Phase of Construction: Excavation and Foundation:***

- Noisy work should be expected during most days during this phase of construction
- Excavation and foundation is anticipated to be complete by mid-October 2022

#### ***What is Happening During the Next Two Weeks:***

- Daytime utility work on Broadway will start in the coming weeks. Work will involve the contractor saw cutting and breaking up the street and sidewalk to install the new building utility connections (for future water and sanitary) by using jackhammers, road saw, and backhoe. A dump truck will be used to remove material.
- Installation of foundation wall formwork and rebar, waterproofing, and steel bracing
- Concrete trucks will be used to install foundation walls
- An excavator will be used to perform cleanup, backfill, and Con Edison vault pits
- Con Edison vaults will be delivered and installed after vault pits are approved by Con Edison.
- Installation of sidewalk shed and rooftop protection at adjacent buildings. In addition, the MTA will install protection at the 125th Street subway station escalator during the week of September 26, from 11:00 p.m. to 7:00 a.m.
- Regular work hours temporarily extended until 8:00 p.m., Monday through Friday

### Studebaker Building Façade Repairs and Roof Replacement

#### ***What is Happening***

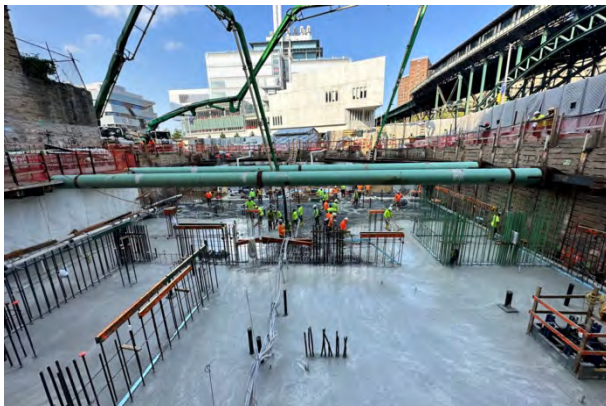
- Terra cotta repairs will continue at the north parapet wall. Intermittent drilling is expected.
- Installation of the sidewalk bridge and additional section of pipe scaffolding on the west elevation. Intermittent metal clanking and hammering noises are expected.
- Once the scaffolding is erected at the west elevation, selective areas of terra cotta, concrete and brick piers will be demolished at the north end of the west parapet wall during the week of September 26. Intermittent drilling and grinding noise are expected.

*-Please note that all activities are subject to change based on weather and other field conditions-*

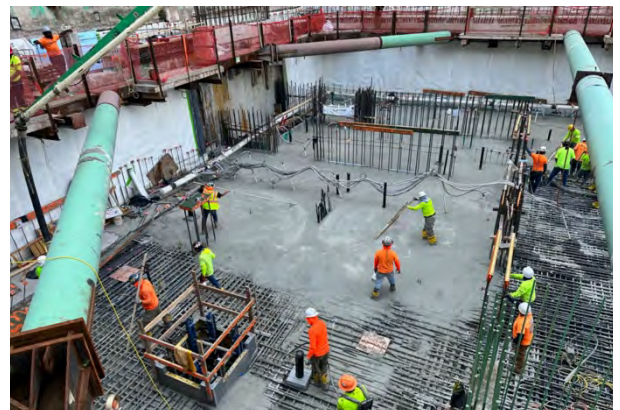
## What to Expect

- Regular working hours are 7:00 a.m. to 6:00 p.m. Monday to Friday, with after-hours work occurring until 8:00 p.m. Some work may also be performed on weekends from 8:00 a.m. to 5:00 p.m. and after hours in accordance with all necessary permits. Note that contractors may mobilize on site approximately 30 to 45 minutes before work commences.
- The MTA will be installing protection at the 125th Street subway station escalator during the week of September 26 between 11:00 p.m. to 7:00 a.m.
- Although contractors carefully stage construction activities to minimize disruption to the surrounding community, the nature of construction work is such that some disruptions will occur. Expect some noise, vibration, dust, and other related impacts due to construction. Visit [neighbors.columbia.edu/content/600-w-125th-street#/cu\\_accordion\\_item-4958](https://neighbors.columbia.edu/content/600-w-125th-street#/cu_accordion_item-4958) to learn about our comprehensive clean construction program and mitigation protocols.
- The parking lane will be closed on the south side of W. 125th Street from Broadway to St. Clair Place. Parking will not be available on the south side of W. 125th Street from Broadway to the mid-block in front of the entire length of the 600 W. 125th Street construction fence.
- Refer to street signage for the west side of Broadway from 129th to 130th Streets — parking is allowed from 7:00 p.m. to 2:00 a.m., and on weekends

## Construction Progress Photos



600 W. 125th Street, looking north



Mat slab pour performed at 600 W. 125th Street

## Need More Information?

For project updates and information, please visit [neighbors.columbia.edu](https://neighbors.columbia.edu). For questions or concerns, e-mail [projx@columbia.edu](mailto:projx@columbia.edu) or call our Services Center at 212-854-2222, 24 hours a day, seven days a week.

## Sustainable Partnerships



## Columbia Neighbors Bulletins Subscription List

[illegible]

## Columbia Neighbors Bulletins Subscription List

[illegible]

## Columbia Neighbors Bulletins Subscription List

[illegible]

## Columbia Neighbors Bulletins Subscription List

[illegible]





## Columbia Neighbors Bulletins Subscription List

[illegible]

[illegible]



## Columbia Neighbors Bulletins Subscription List

[illegible]





## Columbia Neighbors Bulletins Subscription List

[illegible]

## Columbia Neighbors Bulletins Subscription List

[illegible]







## Columbia Neighbors Bulletins Subscription List

[illegible]





## Columbia Neighbors Bulletins Subscription List

[illegible]



[illegible]

[illegible]







[illegible]



[illegible]





## Columbia Neighbors Bulletins Subscription List

[illegible]

[illegible]





## Columbia Neighbors Bulletins Subscription List

[illegible]





[illegible]



[illegible]

[illegible]



## Columbia Neighbors Bulletins Subscription List

[illegible]

[illegible]







[illegible]

## Columbia Neighbors Bulletins Subscription List

[illegible]





[illegible]





[illegible]

## Columbia Neighbors Bulletins Subscription List

[illegible]



[illegible]



[illegible]

[illegible]

## Columbia Neighbors Bulletins Subscription List

[illegible]











[illegible]



## Columbia Neighbors Bulletins Subscription List

[illegible]



## Columbia Neighbors Bulletins Subscription List

[illegible]



## Columbia Neighbors Bulletins Subscription List

[illegible]

[illegible]

[illegible]

## Columbia Neighbors Bulletins Subscription List

[illegible]

[illegible]

## Columbia Neighbors Bulletins Subscription List

[illegible]





## Columbia Neighbors Bulletins Subscription List

[illegible]

## Columbia Neighbors Bulletins Subscription List

[illegible]



[illegible]

[illegible]

## Columbia Neighbors Bulletins Subscription List

[illegible]

[illegible]

[illegible]



[illegible]









[illegible]









[illegible]















[illegible]



























[illegible]

[illegible]

[illegible]

Weekly Construction Updates Subscription List		
First Name	Last Name	Email
John	Doe	john.doe@company.com
Jane	Smith	jane.smith@company.com
Michael	Johnson	michael.johnson@company.com
Emily	Williams	emily.williams@company.com
David	Brown	david.brown@company.com
Sarah	Miller	sarah.miller@company.com
Robert	Wilson	robert.wilson@company.com
Lisa	Moore	lisa.moore@company.com
James	Taylor	james.taylor@company.com
Amanda	Anderson	amanda.anderson@company.com
Christopher	Thomas	christopher.thomas@company.com
Michelle	Clark	michelle.clark@company.com
Daniel	White	daniel.white@company.com
Stephanie	Green	stephanie.green@company.com
Kevin	Black	kevin.black@company.com
Nicole	Gray	nicole.gray@company.com
Brandon	King	brandon.king@company.com
Heather	Wright	heather.wright@company.com
Eric	Scott	eric.scott@company.com
Kimberly	Adams	kimberly.adams@company.com
Matthew	Nelson	matthew.nelson@company.com
Christina	Harris	christina.harris@company.com
Anthony	Young	anthony.young@company.com
Rebecca	King	rebecca.king@company.com
Gregory	Wright	gregory.wright@company.com
Samantha	Scott	samantha.scott@company.com
Benjamin	Adams	benjamin.adams@company.com
Karen	Nelson	karen.nelson@company.com
Jonathan	Harris	jonathan.harris@company.com
Deborah	Young	deborah.young@company.com
Timothy	King	timothy.king@company.com
Angela	Wright	angela.wright@company.com
Steven	Scott	steven.scott@company.com
Christine	Adams	christine.adams@company.com
Patrick	Nelson	patrick.nelson@company.com
Shirley	Harris	shirley.harris@company.com
Donald	Young	donald.young@company.com
Martha	King	martha.king@company.com
Charles	Wright	charles.wright@company.com
Patricia	Scott	patricia.scott@company.com
Joseph	Adams	joseph.adams@company.com
Barbara	Nelson	barbara.nelson@company.com
Thomas	Harris	thomas.harris@company.com
Susan	Young	susan.young@company.com
Richard	King	richard.king@company.com
Elizabeth	Wright	elizabeth.wright@company.com
William	Scott	william.scott@company.com
Carol	Adams	carol.adams@company.com
Mark	Nelson	mark.nelson@company.com
Donna	Harris	donna.harris@company.com
Andrew	Young	andrew.young@company.com
Michelle	King	michelle.king@company.com
Robert	Wright	robert.wright@company.com
Kimberly	Scott	kimberly.scott@company.com
Christopher	Adams	christopher.adams@company.com
Nicole	Nelson	nicole.nelson@company.com
Brandon	Harris	brandon.harris@company.com
Heather	Young	heather.young@company.com
Eric	King	eric.king@company.com
Kimberly	Wright	kimberly.wright@company.com
Matthew	Scott	matthew.scott@company.com
Christina	Adams	christina.adams@company.com
Anthony	Nelson	anthony.nelson@company.com
Rebecca	Harris	rebecca.harris@company.com
Gregory	Young	gregory.young@company.com
Samantha	King	samantha.king@company.com
Benjamin	Wright	benjamin.wright@company.com
Karen	Scott	karen.scott@company.com
Jonathan	Adams	jonathan.adams@company.com
Deborah	Nelson	deborah.nelson@company.com
Timothy	Harris	timothy.harris@company.com
Angela	Young	angela.young@company.com
Steven	King	steven.king@company.com
Christine	Wright	christine.wright@company.com
Patrick	Scott	patrick.scott@company.com
Shirley	Adams	shirley.adams@company.com
Donald	Nelson	donald.nelson@company.com
Martha	Harris	martha.harris@company.com
Charles	Young	charles.young@company.com
Patricia	King	patricia.king@company.com
Joseph	Wright	joseph.wright@company.com
Barbara	Scott	barbara.scott@company.com
Thomas	Adams	thomas.adams@company.com
Susan	Nelson	susan.nelson@company.com
Richard	Harris	richard.harris@company.com
Elizabeth	Young	elizabeth.young@company.com
William	King	william.king@company.com
Carol	Wright	carol.wright@company.com
Mark	Scott	mark.scott@company.com
Donna	Adams	donna.adams@company.com
Andrew	Nelson	andrew.nelson@company.com
Michelle	Harris	michelle.harris@company.com
Robert	Young	robert.young@company.com
Kimberly	King	kimberly.king@company.com
Christopher	Wright	christopher.wright@company.com
Nicole	Scott	nicole.scott@company.com
Brandon	Adams	brandon.adams@company.com
Heather	Nelson	heather.nelson@company.com
Eric	Harris	eric.harris@company.com
Kimberly	Young	kimberly.young@company.com
Matthew	King	matthew.king@company.com
Christina	Wright	christina.wright@company.com
Anthony	Scott	anthony.scott@company.com
Rebecca	Adams	rebecca.adams@company.com
Gregory	Nelson	gregory.nelson@company.com
Samantha	Harris	samantha.harris@company.com
Benjamin	Young	benjamin.young@company.com
Karen	King	karen.king@company.com
Jonathan	Wright	jonathan.wright@company.com
Deborah	Scott	deborah.scott@company.com
Timothy	Adams	timothy.adams@company.com
Angela	Nelson	angela.nelson@company.com
Steven	Harris	steven.harris@company.com
Christine	Young	christine.young@company.com
Patrick	King	patrick.king@company.com
Shirley	Wright	shirley.wright@company.com
Donald	Scott	donald.scott@company.com
Martha	Adams	martha.adams@company.com
Charles	Nelson	charles.nelson@company.com
Patricia	Harris	patricia.harris@company.com
Joseph	Young	joseph.young@company.com
Barbara	King	barbara.king@company.com
Thomas	Wright	thomas.wright@company.com
Susan	Scott	susan.scott@company.com
Richard	Adams	richard.adams@company.com
Elizabeth	Nelson	elizabeth.nelson@company.com
William	Harris	william.harris@company.com
Carol	Young	carol.young@company.com
Mark	King	mark.king@company.com
Donna	Wright	donna.wright@company.com
Andrew	Scott	andrew.scott@company.com
Michelle	Adams	michelle.adams@company.com
Robert	Nelson	robert.nelson@company.com
Kimberly	Harris	kimberly.harris@company.com
Christopher	Young	christopher.young@company.com
Nicole	King	nicole.king@company.com
Brandon	Wright	brandon.wright@company.com
Heather	Scott	heather.scott@company.com
Eric	Adams	eric.adams@company.com
Kimberly	Nelson	kimberly.nelson@company.com
Matthew	Harris	matthew.harris@company.com
Christ		

[illegible]

[illegible]

[illegible]

[illegible]



[illegible]

## Weekly Construction Updates Subscription List

[illegible]

[illegible]

[illegible]

[illegible]

[illegible]

[illegible]

[illegible]





[illegible]

[illegible]

[illegible]

