

**Manhattanville in West Harlem Implementation Plan Report  
October 15, 2019 Submission**

**Declaration Reference and Key Data**

Obligation Section Number: **5.07(c)(i)**

Obligation Title: **Mind Brain Behavior K-12 Education Center**

Obligation Page Number: **52**

Obligation Trigger: **Issuance of TCO for Development Site 2**

Obligation Start Date: **August 25, 2016**

Obligation End Date: **25 Years from Commencement of the Education Center's Full Operation**

Obligation Status: **In Compliance**

**Obligation**

*Mind Brain Behavior K-12 Education Center.* CU shall locate within Development Site 2 (the proposed Jerome L. Greene Science Center) to be constructed in Stage 1 a Center to educate the community about diseases that affect the mind and brain as well as the advances being studied by CU's faculty and researchers. The Center shall encourage and design programs for local elementary, junior high school, and high school students. The Center shall commence operation upon issuance of the temporary certificate of occupancy for the Jerome L. Greene Science Center and operate for a 25-year period from commencement of full operation.

\* The center opened to the public in February 2017. Therefore, this obligation will be in effect until 2042, 25 years from the commencement of the center's full operation.

**Evidence of Compliance**

1. Press release and/or announcement about center opening
2. Link to website
3. Annual report
4. Signage at Jerome L. Greene Science Center

Columbia University's Implementation Plan and all supporting documentation are made available on the Community Services Webpage at <http://manhattanville.columbia.edu/community/benefits-and-amenities>.



## Public Programs at the Zuckerman Institute

### Science and community come together at Columbia's Mortimer B. Zuckerman Mind Brain Behavior Institute

The Zuckerman Institute is delighted to call Manhattanville home and eager to share with our neighbors the challenge and excitement of learning how our minds and brains work. Our Education Lab, located near the 129th Street entrance of the Jerome L. Greene Science Center, is open year round and hosts a variety of hands-on brain science programs. Designed with feedback from the community, these programs harness the groundbreaking research of the institute in creative ways for school children, families, after-school groups, teachers and adults. Contact us to learn more about our programs; we have only just begun!

### Community Brain Expo

What does a human brain feel like? Come find out at the Zuckerman Institute's Community Brain Expo. We invite our neighbors to join us for this free public event, held every spring, which features head-scratching demonstrations and mind-boggling activities for every age. Visitors put their minds to the test as they learn about how we see the world around us, how our memories work and other fundamental aspects of the mind and brain. Led by actual scientists, the event is organized by Columbia University Neuroscience Outreach, a group of Columbia graduate students devoted to sharing brain science with the public. The event is held in celebration of Brain Awareness Week.



The Zuckerman Institute's  
Kelley Remole explains brain  
science to a group of students.  
Credit: Columbia University



## BRAINYAC: Brain Research Apprenticeships in New York at Columbia

Hands-on experience in a laboratory is essential for preparing today's youth to become tomorrow's scientists. With this in mind, the Zuckerman Institute's Brain Research Apprenticeships in New York at Columbia (BRAINYAC) program provides an immersive science research experience in which high school students train and work in neuroscience laboratories at Columbia University. The BRAINYAC program is open to students from select partner programs and schools that serve students in Upper Manhattan and the Bronx. Each student is matched with a Columbia neuroscientist, a mentor who guides the student through a research project. Students come away from the experience with an enhanced understanding of how laboratory research leads to transformative discovery, exposure to a professional academic environment and a stronger connection to science as a career. BRAINYAC receives generous support from the Pinkerton Foundation and the Stavros Niarchos Foundation.

**For more information about the public programs at Columbia's Zuckerman Institute, please contact:**

Amy Weil  
Director of Communications  
amy.weil@columbia.edu  
212-851-4393

Anne Holden, PhD  
Communications Officer  
anne.holden@columbia.edu  
212-853-0171

## Brain Insight Lectures and Teacher-Scholar Program

At the Brain Insight Lectures, free and open to the public, eminent Columbia scientists and scholars examine how brain science intersects with everyday life. Speakers have included Olajide Williams, MD, who spoke about how to prevent strokes in communities of color and Frances Champagne, PhD, discussed how our early experiences shape our behavior. Upcoming lecture by Thomas M. Jessell, PhD, will share his groundbreaking work on the neuroscience of movement. These lectures are the scientific cornerstone of our Teacher-Scholar Program, which introduces middle and high school science teachers in New York City to cutting-edge brain science for the duration of the school year. Using the lectures as case studies, the teachers participate in workshops and create a lesson plan each semester that brings neuroscience back to their classrooms. Teachers who complete the program emerge with greater knowledge of neuroscience, a deeper understanding of the scientific process and a toolbox of concrete ways to implement their knowledge in the classroom. These programs are made possible with generous support from the Stavros Niarchos Foundation.

## Mind Brain Behavior K-12 Education Center

Link to website:

<https://zuckermaninstitute.columbia.edu/education-lab>



Science and community come together at Columbia's Mortimer B. Zuckerman Mind Brain Behavior Institute.

We are delighted to call Manhattanville home and eager to share with our neighbors the challenge and excitement of learning how our minds and brains work. Our Education Lab, located near the 129th Street entrance of the Jerome L. Greene Science Center, is open year-round and hosts a variety of hands-on brain science programs. Designed with feedback from the community, these programs harness the groundbreaking research of the institute in creative ways for school

## Annual Report: Mind Brain Behavior K-12 Education Center

### State Submission Reporting Period: **October 2018 - September 2019**

The ground floor of the Jerome L. Greene Science Center is open to all and is a neighborhood-based resource for brain science education. On February 11, 2017, the Mind Brain Behavior K12 Education center opened, called the Education Lab. Education programs bring together groundbreaking research in creative and exciting ways for school children, families, adults and teachers. Located near the 129th Street entrance to the building, this 1,500 square foot space was designed to resemble the scientific research laboratories of the Zuckerman Institute.

### Saturday Science

One of the Institute's programs at the Education Lab is Saturday Science – a themed free event for students, families and community groups held once a month through the school year. Saturday Science activities and demonstrations are engaging and informative, providing launching points for further exploration, reflection and discovery.

There were seven Saturday Science events on the following dates during this reporting period: September 22, October 20, November 17, December 8, February 22, March 9, and April 13. During these events, a total of 1323 people attended; 655 adults and 668 K-12 aged children. An average of 51% of attendees who disclosed their zip codes were residents of program target communities.

### Brain Insight Lectures

The Zuckerman Institute's free public lecture series, the Stavros Niarchos Foundation Brain Insight Lectures, examines ways that brain science intersects with everyday life. Each lecture features a Columbia researcher whose approaches to the science of brain and mind resonate with a public audience. The lectures, offered four times a year, are the scientific cornerstone of the Stavros Niarchos Foundation Teacher-Scholar program, a competitive program that introduces high school science teachers in New York City to cutting-edge brain science for the duration of a school year. This series is beyond the requirement of Columbia's commitment.

### Public Programming

Between the period of October 2018 through September 2019, the Education Lab has hosted a total of 249 events for a total number of 912 hours of science programming for the public. This includes BRAINYAC (the high school internship program described in the Youth Internships annual report), Saturday Science, the programming of the Brain Insight Teacher-Scholar program, and some additional sessions for middle school students in collaboration with the Double Discovery Center. This number also includes activities hosted by our partner program, the independently operated BioBus, Inc.

### Program Outreach

Each program has a customized publicity strategy built on targeting communities in upper Manhattan and the South Bronx. For example, the Zuckerman Institute publicizes Saturday Science to reach students, families, teachers and community members in upper Manhattan and the South Bronx. Local schools, libraries and community organizations such as Manhattanville Community Center and YMCA Harlem and are informed of this free, fun-filled event electronically via email and through printed (flyer) materials. The Brain Insight Teacher-Scholar Program is publicized each spring during its application period to schools in the local community and city-wide via emails and posts to specific mailing lists including I Teach NYC, Math for America, STEM Teachers NYC. Flyers are hand-delivered to schools including KIPP Infinity Charter School, PS 036 Margaret Douglas, PS 129 John H Finley, Academy for Social Action, Frederick Douglass Academy II Secondary School, Opportunity Charter School, PS 149 Sojourner Truth, PS 165 Robert E Simon, Wadleigh Secondary School for the Performing Arts, Thurgood Marshall Academy, A. Philip Randolph Campus High School, Harlem Renaissance High School, IS 223 Mott Hall High School, Urban Assembly for the Performing Arts, and Eagle Academy.

### Additional Supporting Documentation

- Copies of Saturday Science flyers
- Copy of Brain Insight Teacher-Scholar Program flyer

Community Outreach List

<b>Organization type</b>	<b>Organization name</b>
Community	America Scores
Community	Behind the Book
Community	BioBus
Community	Boys & Girls Club of Harlem
Community	Boys and Girls Club of Harlem
Community	Broadway Presbyterian Church Nursery School
Community	Chamber Music Center of New York
Community	Family Annex
Community	Figure Skating in Harlem
Community	Friends of the Children New York
Community	Get Healthy Harlem
Community	Graham Community Center
Community	Harlem Children's Zone
Community	Harlem Lacrosse
Community	Harlem Stage
Community	Harlem YMCA
Community	HEAF
Community	Henrietta Lyle of CB 10
Community	HypotheKids
Community	Lt JP Kennedy Jr Community Center
Community	Manhattanville Community Center
Community	Morningside Area Alliance
Community	New York City Housing Authority St.Nicholas I Community Center
Community	NYC Mission Society
Community	NYPL Countee Cullen Library
Community	NYPL Harlem Library
Community	NYPL Schomburg
Community	P.A.L.A.N.T.E Harlem
Community	Parenting a Second Time Around (PASTA)
Community	Project Brownstone
Community	Special Needs Activity Center for Kids and Adults
Community	Street Squash
Community	The Cathedral of St. John The Devine
Community	The Reading Team
Community	Urban Advantage
Community	Wendy Hilliard Foundation
Community	Westside Campaign Against Hunger
School	Bloomingdale School of Music
School	Columbia Secondary School
School	Democracy Preparatory Charter School
School	Frederick Douglass Academy II Secondary School
School	Future Leaders Institute Charter School

School	Harlem Academy
School	Harlem Link Charter
School	IS 286 Renaissance Leadership Academy
School	KIPP Infinity Charter School
School	KIPP Star Middle School
School	Knowledge and Power Prep Academy IV
School	MS 54 Booker T. Washington Middle School
School	Opportunity Charter School
School	PS 036 Margaret Douglas
School	PS 076 A Philip Randolph
School	PS 123 Mahalia Jackson
School	PS 129 John H Finley
School	PS 149 Sojourner Truth
School	PS 161 Pedro Albizu Campos
School	PS 161 Perdo Albizu Campos
School	PS 165 Robert E Simon
School	PS 180 Hugo Newman
School	PS 250 Westside Collaborative
School	Purple Circle Early Childhood Program
School	The O'Gorman Garden Harlem
School	Thurgood Marshall Academy
School	Wadleigh Secondary School for the Performing Arts
Teacher network	I Teach NYC
Teacher network	Math for America
Teacher network	STEM Teachers NYC
Columbia University Outreach	Brain Expo attendees
Columbia University Outreach	BRAINYAC mailing list
Columbia University Outreach	Columbia Neuroscience Society
Columbia University Outreach	Columbia Neuroscience Society
Columbia University Outreach	Columbia University Neuroscience Outreach
Columbia University Outreach	Late Night Science
Columbia University Outreach	Office of Government and Community Affairs



# COLUMBIA | Zuckerman Institute

MORTIMER B. ZUCKERMAN MIND BRAIN BEHAVIOR INSTITUTE

## FALL 2018

## Public Programs



Free events to explore the mind, brain, and behavior

 [zuckermaninstitute.columbia.edu](http://zuckermaninstitute.columbia.edu)

 [zuckermanbrain](https://www.instagram.com/zuckermanbrain)

 [zuckermaninstitute](https://www.facebook.com/zuckermaninstitute)

 [programs@zi.columbia.edu](mailto:programs@zi.columbia.edu)

## Saturday Science

- |       |                              |
|-------|------------------------------|
| 9/22  | <b>Hello Brain</b>           |
| 10/20 | <b>Come to Your Senses</b>   |
| 11/17 | <b>Decisions, Decisions!</b> |
| 12/8  | <b>Let's Move It</b>         |

**For kids of all ages**

Jerome L. Greene Science Center  
Education Lab  
3227 Broadway, New York

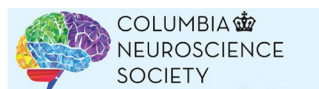
## Stavros Niarchos Foundation Brain Insight Lectures

- |       |   |
|-------|---|
| 9/26  | <b>Understanding Alzheimer's Disease Through Its Anatomical Vulnerability   Dr. Scott Small</b>               |
| 11/15 | <b>Getting a Head Start: The Developing Brain and the Importance of Early Experiences   Dr. Nim Tottenham</b> |

**For high school students and adults**

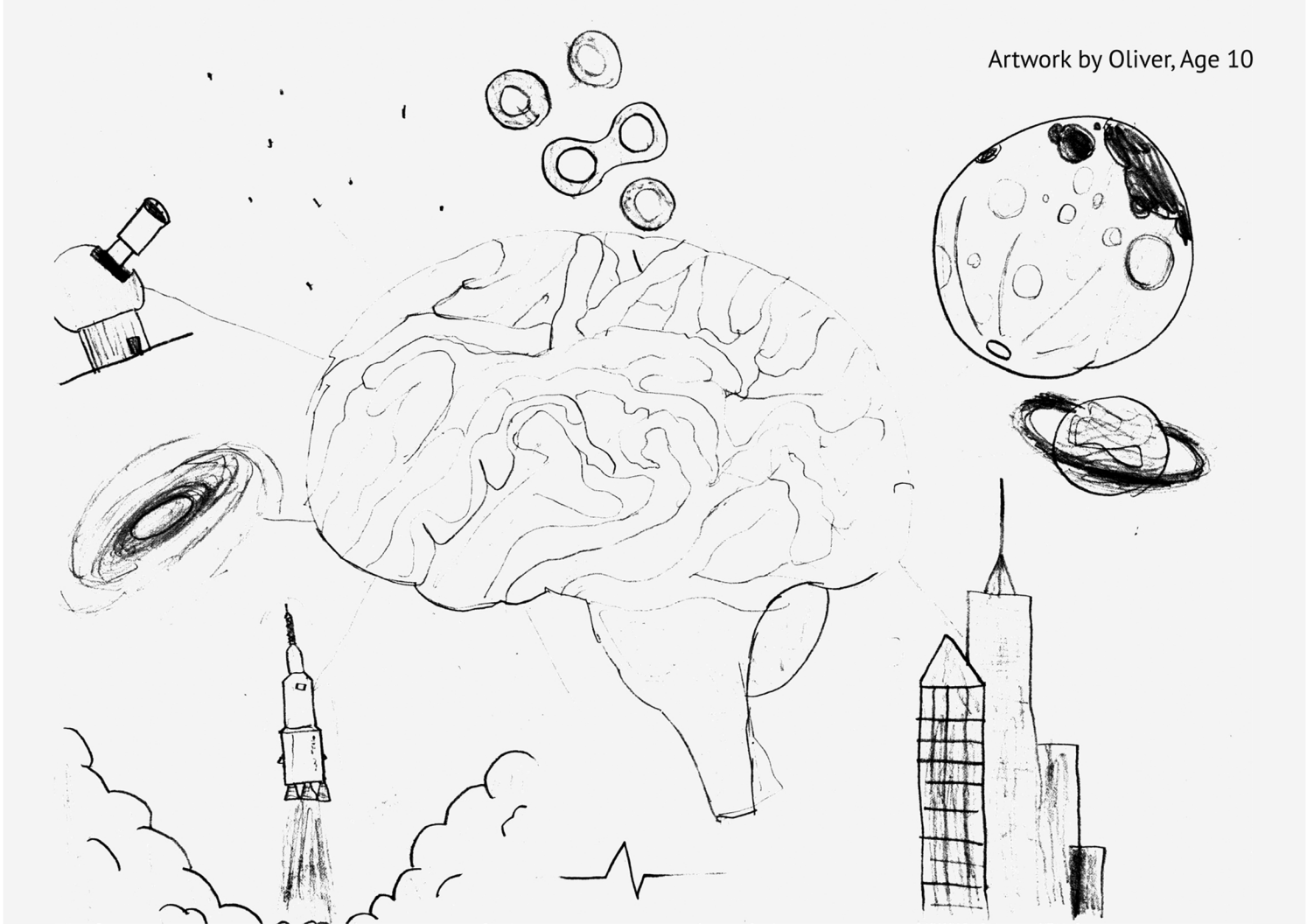
Joseph D. Jamail Lecture Hall  
Columbia University  
Graduate School of Journalism  
2950 Broadway, New York

**With support from:**



**BIOBUS**





# COLUMBIA | Zuckerman Institute

MORTIMER B. ZUCKERMAN MIND BRAIN BEHAVIOR INSTITUTE

## SATURDAY SCIENCE



Free events to explore the mind, brain and behavior

A monthly event for families and community groups to explore the workings of the brain through hands-on activities and unique scientific resources. For kids of all ages!

### Spring 2019 Calendar

Saturday, February 9, 2019	1-4PM	<b>My Growing Brain</b>
Saturday, March 9, 2019	1-4PM	<b>Healthy Brain, Happy Brain</b>
Saturday, April 13, 2019	1-4PM	<b>Mad Science</b>
Saturday, May 18, 2019	1-4PM	<b>Super Saturday STEM Expo</b> (visit <a href="http://supersaturdaystemexpo.org">supersaturdaystemexpo.org</a> for more information)

All dates and times are subject to change. Please visit our website: [zuckermaninstitute@columbia.edu](mailto:zuckermaninstitute@columbia.edu) to register and sign up for updates  
Follow us at:

 @zuckermanbrain  zuckermaninstitute

Columbia University's Zuckerman Institute, 609 West 129th Street, Education Lab (ground floor)



**BIOBUS**



# Apply now for the Brain Insight Teacher-Scholar Program



## Are you a high school teacher in New York City?

Do you teach science or math, or have an interest in brain science? If so, this fellowship is for you. Based at Columbia University's Zuckerman Institute, the Teacher-Scholar Program offers an opportunity to learn about cutting-edge neuroscience research and be part of a team creating educational materials to bring neuroscience to the classroom.

This is a paid, 1-year fellowship at Columbia University.

For more information and to apply:

<https://zuckermaninstitute.columbia.edu/teacher-scholar-program>  
[programs@zi.columbia.edu](mailto:programs@zi.columbia.edu)

Application deadline  
May 21, 2019



JEROME L.  
GREENE

SCIENCE  
CENTER

NG KING SCHOOL  
XING SCHOOL



JEROME I.  
GREEN SCIENCE  
CENTER

**GREENE SCIENCE CENTER  
ZUCKERMAN INSTITUTE**

JEROME L  
GREENE SCIENCE  
CENTER



COLUMBIA UNIVERSITY

JLG Lobby

609 W 129

EDUCATION  
LABORATORY

EDUCATION  
LABORATORY







Zuckerman Institute Education Lab