



# Manhattanville in West Harlem Campus Plan

Construction Activities for the Next Two Weeks

**C**olumbia's long-term plan for the old Manhattanville manufacturing area will revitalize the four former industrial blocks from 125th/129th to 133rd Street between Broadway and 12th Avenue, and three small blocks along the east side of Broadway from 131st to 134th Street, into an environmentally sustainable and publicly accessible center for academic and civic life woven into the fabric of the West Harlem community.

## Construction Activities for the Weeks of November 21, 2022 and November 28, 2022

### 600 W. 125th Street

#### ***Current Phase of Construction: Superstructure:***

- Noisy work should be expected during most days during this phase of construction
- The superstructure phase is anticipated to be complete in Spring 2023

#### ***What is Happening During the Next Two Weeks:***

- Protection for the 125th Street subway station escalator will be performed between **11:00 p.m. to 7:00 a.m. on Friday, November 18 and Monday, November 21**, pending weather and other field conditions.
- Delivery and installation of a tower crane and associated sidewalk safety bridge will **start at 3:00 a.m. on Saturday, November 19** and last until the late evening. Work will involve the delivery of tower crane sections on flatbed trucks, the installation of the crane sections by mobile cranes, and assembly of sidewalk bridge protection.
- Work related to the tower crane and sidewalk bridge will continue on **Sunday, November 20 beginning at 8:00 a.m.** and is anticipated to be complete at 8:00 p.m. that evening.
- Weekend installation of 125th Street sidewalk protection and adjacent building rooftop protection
- Daytime utility work on 125th Street by Con Edison is underway. Work will involve saw cutting and breaking up the sidewalk to install the new building's permanent power by using jackhammers, road saw, and backhoe. A dump truck will be used to remove material.
- Installation of rebar and formwork for columns and second and third for slabs
- Concrete trucks will be used to pour columns and slabs
- Regular work hours temporarily extended until 8:00 p.m., Monday through Friday

### Studebaker Building Façade Repairs and Roof Replacement

#### ***What is Happening***

- Hanging scaffolding will be installed on the south elevation for window caulking replacement and lintel painting. Work is mostly quiet. This work will continue for approximately 2-3 weeks.
- Parapet demolition and rebuilding will continue at the elevator tower for approximately 2-3 weeks. Work will create heavy drilling noise and vibration for one week and then will be mostly quiet.
- Terra cotta repairs will continue at the north and west parapet wall. Work is mostly quiet but occasional drilling is expected, mainly on the 6th floor.
- East elevation stucco installation will continue for the next 2-3 weeks, weather permitting. Work is mostly quiet.

*-Please note that all activities are subject to change based on weather and other field conditions-*

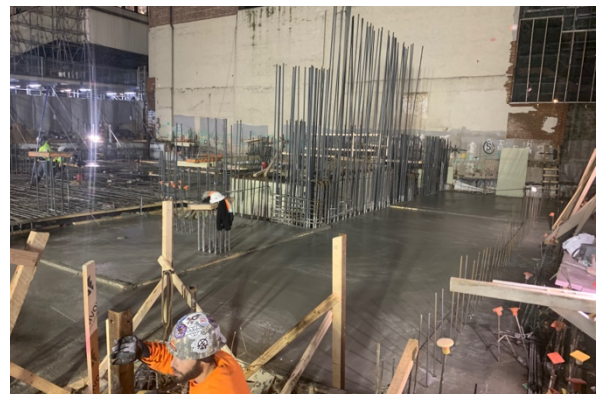
## What to Expect

- Regular working hours are 7:00 a.m. to 6:00 p.m. Monday to Friday, with after-hours work occurring until 8:00 p.m. Some work may also be performed on weekends from 8:00 a.m. to 5:00 p.m. and after hours in accordance with all necessary permits. Note that contractors may mobilize on site approximately 30 to 45 minutes before work commences.
- Setup of tower crane and associated sidewalk safety bridge will start at 3:00 a.m. on Saturday, November 19, continuing into the late evening. Work will resume on Sunday, November 20 beginning at 8:00 a.m. through 8:00 p.m. that evening. Expect bright lights on site during night work to illuminate the site for safety, banging noises throughout assembly, and other related impacts common to construction.
- On Saturday, November 19 and Sunday, November 20, three lanes will be closed on 125th St., with two lanes remaining open (one eastbound and one westbound). The sidewalk on the south side of 125th St. will be closed completely between Broadway and St. Claire place.
- Installation of protection at the 125th Street subway station escalator is being performed between 11:00 p.m. to 7:00 a.m. on Friday, November 18 and Monday, November 21.
- Although contractors carefully stage construction activities to minimize disruption to the surrounding community, the nature of construction work is such that some disruptions will occur. Expect some noise, vibration, dust, and other related impacts due to construction. Visit [neighbors.columbia.edu/600w125thstreet#cu\\_accordion\\_item-4958](https://neighbors.columbia.edu/600w125thstreet#cu_accordion_item-4958) to learn about our comprehensive clean construction program and mitigation protocols.
- The parking lane will be closed on the south side of W. 125th Street from Broadway to St. Clair Place. Parking will not be available on the south side of W. 125th Street from Broadway to the mid-block in front of the entire length of the 600 W. 125th Street construction fence.
- Refer to street signage for the west side of Broadway from 129th to 130th Streets — parking is allowed from 7:00 p.m. to 2:00 a.m., and on weekends.

## Construction Progress Photos



600 W. 125th Street, looking west



600 W. 125th Street, looking south

## Need More Information?

For project updates and information, please visit [neighbors.columbia.edu](https://neighbors.columbia.edu). For questions or concerns, e-mail [projx@columbia.edu](mailto:projx@columbia.edu) or call our Services Center at 212-854-2222, 24 hours a day, seven days a week.

## Sustainable Partnerships

