



# Manhattanville in West Harlem Campus Plan

Construction Activities for the Next Two Weeks

**C**olumbia's long-term plan for the old Manhattanville manufacturing area will revitalize the four former industrial blocks from 125th/129th to 133rd Street between Broadway and 12th Avenue, and three small blocks along the east side of Broadway from 131st to 134th Street, into an environmentally sustainable and publicly accessible center for academic and civic life woven into the fabric of the West Harlem community.

## Construction Activities for the Weeks of July 25, 2022 and August 1, 2022

### 600 W. 125th Street

#### ***Current Phase of Construction: Excavation and Foundation:***

- Noisy work should be expected during most days during this phase of construction
- Excavation and foundation is anticipated to be complete by the end of the third quarter of 2022

#### ***What is Happening During the Next Two Weeks:***

- Daytime utility work to commence on the north side of 125th Street and Broadway, pending the approval of permits. Work will involve the contractor saw cutting and breaking up the street to install the new building utility connections (for future water and sanitary) by using jackhammers, road saw, and backhoe. A dump truck will be used to remove material.
- Installation of temporary power shed and equipment
- Installation of soil plugs which includes the drilling of metal sleeves and injecting of concrete
- Installation of dewatering system headers and pumps to commence site dewatering
- Installation of foundation rebar, formwork, and waterproofing
- Concrete trucks will be used to install the mud slabs and mat slabs
- Underground utility installation for the building has commenced
- An excavator will be used to complete site grading, clean up, and soil removal
- Regular work hours temporarily extended until 8:00 p.m. Monday through Friday

### Studebaker Building Façade Repairs and Roof Replacement

#### ***What is Happening***

- Removal of the spalled concrete wall at the east elevation will resume the week of August 1. Demolition will be limited to the northeast and southeast corners and will continue for approximately 2-3 weeks.
- Installation of facing brick at the parapet wall on the west elevation, east elevation and the bulkhead elevation will continue through the weeks of July 25 and August 1.
- Terra cotta repairs will continue at the south and southwest corner parapet wall for the next 2-3 weeks.
- The sidewalk bridge on West 132nd Street (north elevation) will be replaced the week of August 1. The existing sidewalk bridge will be removed and a new sidewalk will be installed.

*-Please note that all activities are subject to change based on weather and other field conditions-*

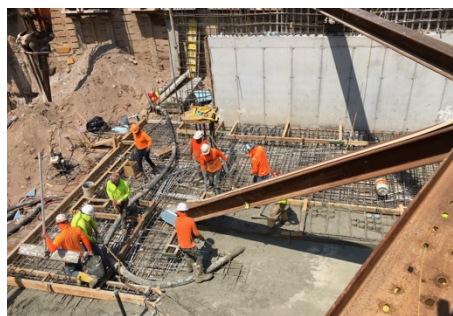
## What to Expect

- Regular working hours are 7:00 a.m. to 6:00 p.m. Monday to Friday, with after-hours work occurring until 8:00 p.m. Some work may be performed on weekends from 8:00 a.m. to 5:00 p.m. and after hours in accordance with all necessary permits. Note that contractors may mobilize on site approximately 30 to 45 minutes before work commences.
- Although contractors carefully stage construction activities to minimize disruption to the surrounding community, the nature of construction work is such that some disruptions will occur. Expect some noise, vibration, dust, and other related impacts due to construction. Visit [neighbors.columbia.edu/content/600-w-125th-street#/cu\\_accordion\\_item-4958](https://neighbors.columbia.edu/content/600-w-125th-street#/cu_accordion_item-4958) to learn about our comprehensive clean construction program and mitigation protocols.
- The parking lane will be closed on the south side of W. 125th Street from Broadway to St. Clair Place. Parking will not be available on the south side of W. 125th Street from Broadway to the mid-block in front of the entire length of the 600 W. 125th Street construction fence.
- Refer to street signage for the west side of Broadway from 129th to 130th Streets — parking is allowed from 7:00 p.m. to 2:00 a.m., and on weekends

## Construction Progress Photos



Ejector pit and dewatering system at  
600 W. 125th Street



Northern slab at 600 W. 125th Street

## Need More Information?

For project updates and information, please visit [neighbors.columbia.edu](https://neighbors.columbia.edu). For questions or concerns, e-mail [projx@columbia.edu](mailto:projx@columbia.edu) or call our Services Center at 212-854-2222, 24 hours a day, seven days a week.

## Sustainable Partnerships

