



# Manhattanville in West Harlem Campus Plan

Construction Activities for the Next Two Weeks

**C**olumbia's long-term plan for the old Manhattanville manufacturing area will revitalize the four former industrial blocks from 125th/129th to 133rd Street between Broadway and 12th Avenue, and three small blocks along the east side of Broadway from 131st to 134th Street, into an environmentally sustainable and publicly accessible center for academic and civic life woven into the fabric of the West Harlem community.

## Construction Activities for the Weeks of July 18, 2022 and July 25, 2022

### 600 W. 125th Street

#### ***Current Phase of Construction: Excavation and Foundation:***

- Noisy work should be expected during most days during this phase of construction
- Excavation and foundation is anticipated to be complete by the end of the third quarter of 2022

#### ***What is Happening During the Next Two Weeks:***

- Daytime utility work is anticipated to commence for water service on the north side of 125th Street on Friday, July 15. Work will involve the contractor saw cutting and breaking up the street to install the new building utility connections (for future water and sanitary) by using jackhammers, road saw, and backhoe. A dump truck will be used to remove material. Daytime utility work is anticipated to begin on Broadway in the coming weeks, pending the approval of permits.
- Installation of soil plugs which includes the drilling of metal sleeves and injecting concrete
- Installation of dewatering system headers and pumps to commence site dewatering
- Installation of foundation rebar, formwork, and waterproofing
- Concrete trucks will be used to install the mud slabs and mat slabs
- Underground utility installation for the building has commenced
- An excavator will be used to complete site grading, clean up, and soil removal

### Studebaker Building Façade Repairs and Roof Replacement

#### ***What is Happening***

- Removal of the spalled concrete wall at the east elevation. Demolition will be limited to the northeast and southeast corners and will continue for approximately 2 weeks.
- Terra cotta repairs will continue at the south and southwest corner parapet wall for the next 2 weeks.
- Abatement of tar coating on the brick chimney on the east elevation and coping stone on the west elevation will be scheduled for the week of July 18. This tar coating is non-friable, and the abatement work is limited to the roof level only. All debris will be properly removed from the roof via the exterior scaffolding.

*-Please note that all activities are subject to change based on weather and other field conditions-*

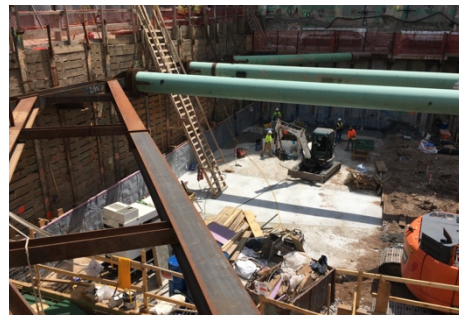
## What to Expect

- Regular working hours are 7:00 a.m. to 6:00 p.m. Monday to Friday, with hours adjusted within that window depending on the construction activity. Some work may be performed on weekends from 8:00 a.m. to 5:00 p.m. and after hours in accordance with all necessary permits. Note that contractors may mobilize on site approximately 30 to 45 minutes before work commences.
- Although contractors carefully stage construction activities to minimize disruption to the surrounding community, the nature of construction work is such that some disruptions will occur. Expect some noise, vibration, dust, and other related impacts due to construction. Visit [neighbors.columbia.edu/content/600-w-125th-street#/cu\\_accordion\\_item-4958](https://neighbors.columbia.edu/content/600-w-125th-street#/cu_accordion_item-4958) to learn about our comprehensive clean construction program and mitigation protocols.
- The parking lane will be closed on the south side of W. 125th Street from Broadway to St. Clair Place. Parking will not be available on the south side of W. 125th Street from Broadway to the mid-block in front of the entire length of the 600 W. 125th Street construction fence.
- Refer to street signage for the west side of Broadway from 129th to 130th Streets — parking is allowed from 7:00 p.m. to 2:00 a.m., and on weekends

## Construction Progress Photos



Northern foundation and utilities work at 600 W. 125th Street



Mud slabs and foundations work at 600 W. 125th Street

## Need More Information?

For project updates and information, please visit [neighbors.columbia.edu](https://neighbors.columbia.edu). For questions or concerns, e-mail [projx@columbia.edu](mailto:projx@columbia.edu) or call our Services Center at 212-854-2222, 24 hours a day, seven days a week.

## Sustainable Partnerships

