



# Manhattanville in West Harlem Campus Plan

Construction Activities for the Next Two Weeks

**C**olumbia's long-term plan for the old Manhattanville manufacturing area will revitalize the four former industrial blocks from 125th/129th to 133rd Street between Broadway and 12<sup>th</sup> Avenue, and three small blocks along the east side of Broadway from 131st to 134th Street, into an environmentally sustainable and publicly accessible center for academic and civic life woven into the fabric of the West Harlem community.

## Construction Activities for the Weeks of February 21, 2022 and February 28, 2022

### 600 W. 125th Street

#### *Current Phase of Construction: Excavation and Foundation:*

- Noisy work should be expected during most days during this phase of construction
- Excavation and foundation is anticipated to be complete by the end of the second quarter of 2022

#### *What is Happening During the Next Two Weeks:*

- Overnight utilities work is being performed on W. 125th Street from 10:00 p.m. to 6:00 a.m. This work is anticipated to be complete by the end of February.
- Pile trimming
- Dewatering system setup and dewatering will be forthcoming
- Cap beam installation
- Work for new egress stair at 31 Tiemann courtyard
- Saturday work will be performed from 9:00 a.m. to 5:00 p.m. and will produce consistent noise as during the week

*-Please note that all activities are subject to change based on weather and other field conditions-*

#### *What to Expect*

- Regular working hours are 7:00 a.m. to 6:00 p.m. Monday to Friday, with hours adjusted within that window depending on the construction activity. After-hours work will be performed between 10:00 p.m. to 6:00 a.m., and may occur on weekends from 9:00 a.m. to 5:00 p.m. in accordance with all necessary permits from the New York City Department of Buildings. Note that contractors may mobilize on site approximately 30 to 45 minutes before work commences.
- Although contractors carefully stage construction activities to minimize disruption to the surrounding community, the nature of construction work is such that some disruptions will occur. Expect some noise, vibration, dust, and other related impacts due to construction. Visit [neighbors.columbia.edu/content/600-w-125th-street#/cu\\_accordion\\_item-4958](https://neighbors.columbia.edu/content/600-w-125th-street#/cu_accordion_item-4958) to learn about our comprehensive clean construction program and mitigation protocols.

*(Over)*

## Construction Update

*Weeks of February 21, 2022 and February 28, 2022*

### *What to Expect (continued)*

- The parking lane will be closed on the south side of W. 125th Street from Broadway to St. Clair Place. Parking will not be available on the south side of W. 125th Street from Broadway to the mid-block in front of the entire length of the 600 W. 125th Street construction fence.
- Refer to street signage for the west side of Broadway from 129th to 130th Streets — parking is allowed from 7:00 p.m. to 2:00 a.m., and on weekends

### Construction Progress Photos



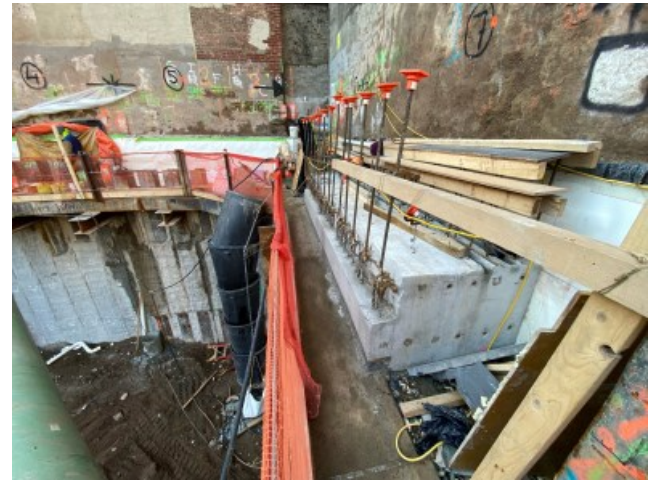
David Geffen Hall and The Square, looking east



Henry R. Kravis Hall and The Square, looking west



600 W. 125th Street, looking northeast



600 W. 125th Street cap beam installation

### Need More Information?

For project updates and information, please visit [neighbors.columbia.edu](https://neighbors.columbia.edu). For questions or concerns, e-mail [projx@columbia.edu](mailto:projx@columbia.edu) or call our Services Center at 212-854-2222, 24 hours a day, seven days a week.

### Sustainable Partnerships

