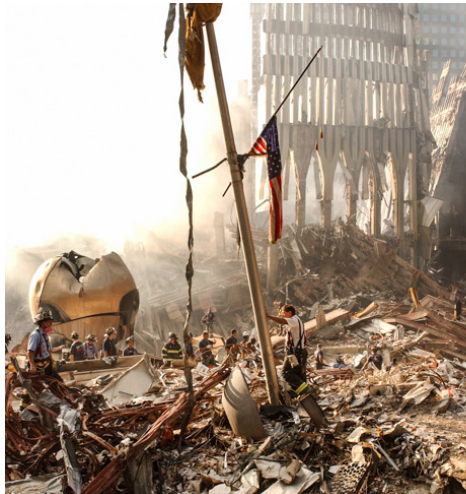


# Neighbors Bulletin



Left: The Recovery of Fritz Koenig's "Great Caryatid Sphere", Right: Koenig's "Sphere". Image courtesy of the Wallach Gallery.

## Community Updates

### THE WAY WE REMEMBER AT THE WALLACH GALLERY

The Wallach Gallery is commemorating the 20th anniversary of 9/11 with the exhibition *The Way We Remember: Koenig's Sphere, 9/11 and the Politics of Memory*, which explores themes surrounding the issues of public monuments, memories, trauma, and the power of art to represent the past.

While the exhibition opens by examining Fritz Koenig's "Great Caryatid Sphere," which became one of the earliest 9/11 memorials after it emerged from the rubble of the towers, it goes on to explore the other ways 9/11 has been memorialized, including the World Trade Center memorial project and the inauguration of "Reflecting Absence" as an official National 9/11 Memorial. *The Way We Remember* also delves into how loss and tragedy are visualized and quantified in art, including in the context of marking and memorializing the COVID-19 pandemic.

*The Way We Remember* will be at the Wallach from September 10 to November 14, 2021. The gallery is open to the public with a reservation on Fridays and Saturdays from noon to 6:00 PM. To learn more about *The Way We Remember* or make a reservation, visit at [neighbors.columbia.edu/thewayweremember](https://neighbors.columbia.edu/thewayweremember).

### BRIAN BENJAMIN BECOMES HOCHUL'S LT. GOVERNOR



Harlem native and State Senator Brian Benjamin has been tapped as Governor Kathy Hochul's lieutenant governor. Benjamin has served in the State Senate since 2017, representing District 30 (Harlem and parts of Washington Heights). As a State Senator, he has championed criminal justice reforms and worked to help small businesses in his district and around the state.

Benjamin will be sworn in as lieutenant governor after Labor Day. In that role, he will preside over the State Senate and provide a tiebreaking vote, if necessary. Prior to serving in the State Senate, Benjamin was chair of Community Board 10.

## Community Events

Check with event organizers for the latest updates, find more events at [neighbors.columbia.edu/events](https://neighbors.columbia.edu/events)



### Opera in Jackie Robinson Park

Sept 3, 6PM

See a free performance by Courtney's Stars of

Tomorrow, accompanied by The Riverside Orchestra at the Jackie Robinson Park Bandshell.

[neighbors.columbia.edu/operapark](https://neighbors.columbia.edu/operapark)



### Apply for a Dance Grant

Due Sept 8

The UMEZ Mertz Gilmore Seed Fund for Dance will provide

\$5,000 grants to support dancers and choreographers in Upper Manhattan.

[neighbors.columbia.edu/seedfunddance](https://neighbors.columbia.edu/seedfunddance)



### Start Your Lean Business

Sept 14, 10AM

Learn the fundamentals of building a lean

business, including how to develop a scalable business model.

[neighbors.columbia.edu/leanbiz921](https://neighbors.columbia.edu/leanbiz921)



### Interfaith Church Annual Food Drive

Sept 20 - Oct 15

Non-perishable boxed and canned goods can be dropped off at the

church (suite 240) from 9AM to 4PM. Call 212-870-2200 to learn more.

[neighbors.columbia.edu/churchfood21](https://neighbors.columbia.edu/churchfood21)



### Mind-Wandering Between Memory and Creativity

Sept 27, 4PM

Learn about the latest research into why our

minds wander, and discuss the relationships between mind-wandering, memory, and creativity.

[neighbors.columbia.edu/mindwander](https://neighbors.columbia.edu/mindwander)



### Entrepreneurial Design Thinking Application

Due Sept 28

Learn about contemporary design thinking tools and

generate innovative solutions to important community problems in this eight-week program.

[neighbors.columbia.edu/edt2021](https://neighbors.columbia.edu/edt2021)