

Neighbors Bulletin



Pictured: Business Closed

Community Updates

COLUMBIA-HARLEM SBDC A LIFELINE FOR BUSINESSES

The Columbia-Harlem Small Business Development Center (SBDC) at Columbia Business School has been supporting Harlem businesses throughout the COVID-19 pandemic. Support has primarily taken the form of helping small businesses secure loans and develop plans in order to keep their doors open. This is especially valuable in a community where many business owners are from historically disenfranchised backgrounds.

Due to closures and decreases in revenue, the SBDC has seen a sharp increase in their number of clients, from around 30 clients per advisor to almost 100. They have created guidelines for how to apply for each type of loan, comparisons between funds, and calculators to help business owners understand how much they could be awarded.

“The sense of unknown and the feeling of unfolding doom shifted for us in a way that would not have been possible without the outreach of the Columbia-Harlem SBDC,” says Yael Alkalay, CEO and Founder of Red Flower, a spa-products company in Harlem that received loan funding with guidance. “They offered a ray of hope.”

For more information about applying for financial assistance or to get support from the Columbia-Harlem SBDC, visit gsb.columbia.edu/sbdc.

ENGINEERING OUTREACH PROGRAMS GO ONLINE



Outreach at Columbia Engineering is moving its public programs online, including the Summer High School Academic Program for Engineers (SHAPE), Engineering the Next Generation (E.N.G.), and the COSMOS-NewLAW Research Experience for Teachers Program (RET). The new details of these programs are still being finalized.

SHAPE is a selective program that offers college-level instruction in engineering to high school students. E.N.G. provides lab work and more to underrepresented high school students from local schools. RET is a summer program where teachers learn about the most advanced techniques in wireless technology. Learn about these programs and more at outreach.engineering.columbia.edu.

Community Events



DISCLAIMER

Event details may change so be sure to check in with event organizers for the latest updates, and be prepared for more virtual events over the next few weeks.

neighbors.columbia.edu/events



Contact Tracing: Balancing Public Health & Privacy

May 12 6:30PM
Join Manhattan Borough President Gale

Brewer and Rep. Jerrold Nadler for a discussion about contact tracing, technology, data, and privacy.
neighbors.columbia.edu/covid19tracing



Community Scholars Applications Due May 15

Independent scholars from Upper Manhattan can get access to

Columbia resources for three years to complete a project. Up to five selected annually.

neighbors.columbia.edu/scholarsapp



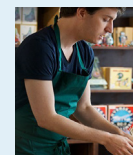
Earth Institute Live

May 8, May 11, May 13, May 18, May 20, May 27 2:00PM

Science education from Earth Institute scientists!

Themed one-hour sessions, targeted at different age groups.

neighbors.columbia.edu/EILive



Neighbors Small Business Resources

Online Now
Columbia Neighbors provides resources for small businesses from

Columbia, neighborhood partners, and local, state and federal governments.

neighbors.columbia.edu/smallbiz



Neighbors COVID-19 Resources Site

Online Now
Columbia Neighbors curates a page of news, resources, official guidance, and updates from the University that are helpful to our Neighbors.

neighbors.columbia.edu/coronavirus