

Neighbors Bulletin



Pictured: Columbia University Shuttle Bus

Community Updates

COMMUNITY SHUTTLE BUS SERVICE

It's cold outside! Columbia University provides a community shuttle bus service free of charge to members of the local community who are disabled or age 65 and older (including their attendants) via the ADA-accessible Intercampus Shuttle. The shuttle bus service connects with subway stations along Broadway at 96th, 116th, 125th, and 168th Street as well as Harlem Hospital on 135th Street and Lenox Ave. The shuttle bus service runs regularly from 9:00am to 5:00pm on weekdays, except on state and federal public holidays. Senior citizens and disabled passengers must show their Access-A-Ride, Reduced-Fare MetroCards, or Medicare cards, in order to access the service.

For more information, visit transportation.columbia.edu, call 212-854-3382, or email transportation@columbia.edu.

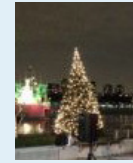
COLUMBIA COMMUNITY SERVICE



This fall, the Presidents of Columbia, Barnard and Teachers College kicked off the Columbia Community Service (CCS) 73rd annual appeal. The appeal seeks to collect donations and encourage volunteerism among employees. One-hundred percent of the donations are used to fund grants for dozens of nonprofit institutions that provide youth, arts and social service programs in Morningside Heights and Harlem.

To learn more about CCS, including how to apply for funding, visit: communityservice.columbia.edu

Community Events



West Harlem Piers: Tree Lighting

Dec 7 4:30PM

Join NYC Parks for their holiday tree lighting party and celebrate the season with live music,

tree decorating and more.

neighbors.columbia.edu/WHP1207



Saturday Science: Making Choices

Dec 7 1PM

Families and community groups are invited to explore the brain and how your brain chooses

and decides.

neighbors.columbia.edu/SS1207



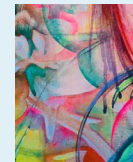
4th Annual Lea K. Green Artist Talk

Dec 12 6:30PM

The Studio Museum honors Dawoud Bey as he shares his artistry with Thelma Golden,

the talk is presented in partnership with The Forum, CU.

neighbors.columbia.edu/dawoud1212



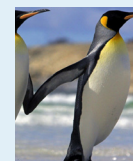
Free Caribbean Music for Two Guitars Concert

Dec 13 7PM

Enjoy rich and diverse music from Puerto Rico, Curaçao, and Cuba at a Free Faculty Concert

from the Bloomingdale School of Music. Free RSVP at

neighbors.columbia.edu/BSMFree1213



Lenfest Kids: March of the Penguins

Dec 14 11AM & 3PM

Lenfest Kids celebrates Columbia's Year of Water with the film "March of the Penguins."

Tickets are \$7 in advance or \$9 at the door. Purchase tickets at

neighbors.columbia.edu/Lenfest1214



Uptown Artisanal Pop-Up

Dec 13 & 14 11AM

The Uptown Artisanal Pop-Up market features offerings from unique local vendors

supported with retail space from CU.

Learn more at

uptownartisanal.com